

**WOMEN IN CANCER RESEARCH
MEMBERSHIP RECEPTION & CAUCUS
AACR ANNUAL MEETING
MONDAY, MARCH 29, 2004**

**Michaele C. Christian, M.D.
Cancer Therapy Evaluation Program
National Cancer Institute**

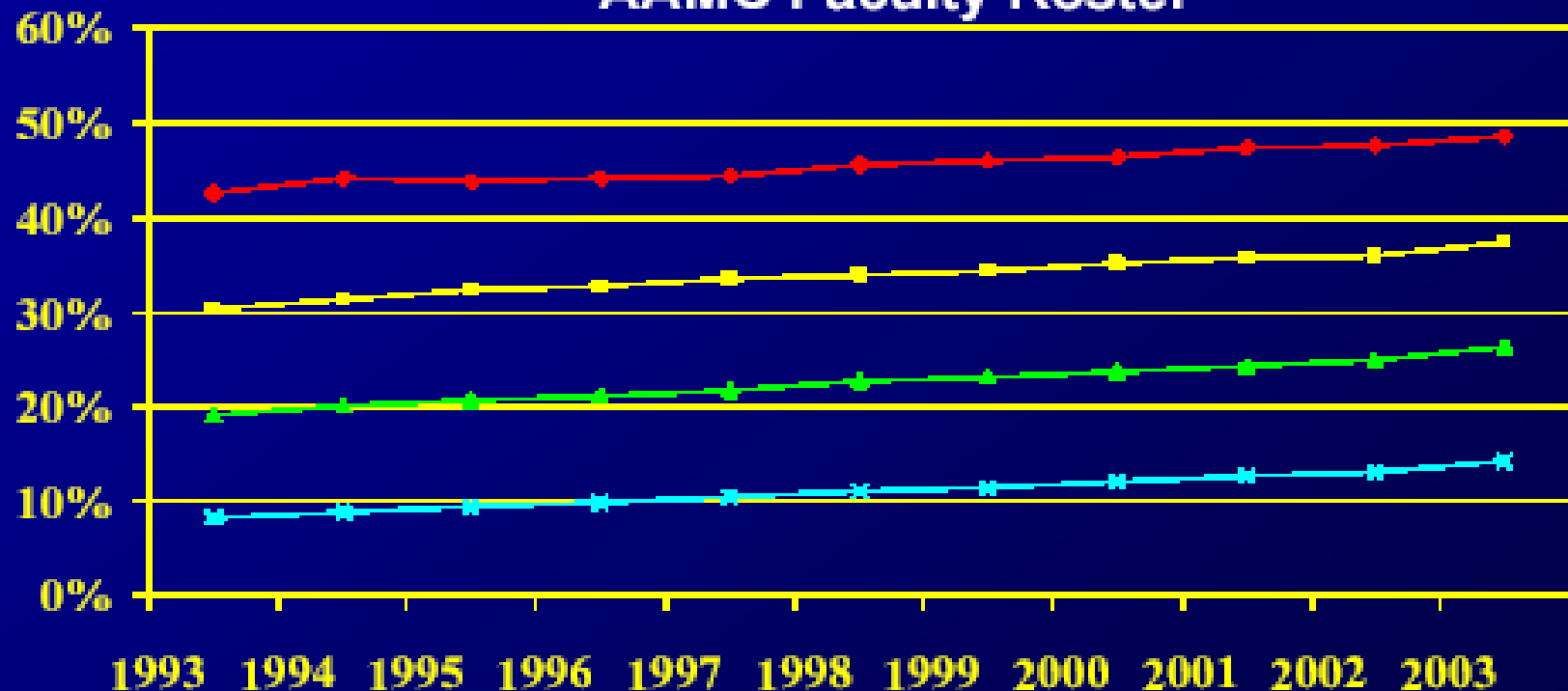
WOMEN IN CANCER RESEARCH CHAIR'S 2004-05 GOALS

- 1. Provide and publicize data to support the professional advancement of women**
- 2. Increase the membership of WICR**
 - Further improve member services**
- 3. Work with AACR and the other Councils to develop effective mentor training programs and approaches**

U.S. Medical School Female Faculty as a Percent of Each Rank

1993-2003

AAMC Faculty Roster



—●— Instructor —■— Asst Prof —▲— Assoc Prof —*— Professor



NCI RESEARCH GRANTS
P01, R01, R03, R29,R35,R37, U01,
PRELIMINARY GENDER FUNDING – SUCCESS RATES
1992 women held

- 17% of competing research grants
- 16% of R01s

| | FEMALE | MALE | UNKNOWN |
|-------|---------------|-------------|----------------|
| ALL | 148/507 | 718/2263 | 63/287 |
| | 29% | 32% | 22% |
| R01 | 105/402 | 534/1857 | 43/236 |
| | 26% | 29% | 18% |
| TOTAL | 929/3057 | 30% | |

NCI RESEARCH GRANTS

P01, R01, R03, R15,R21,R29,R33,R37,R55, U01, U19

PRELIMINARY GENDER FUNDING – SUCCESS RATES

2002 women held

– 21% of competing research grants

• 20% of R01s

| | FEMALE | MALE | UNKNOWN |
|---------|------------|------------|------------|
| ALL | 248/1005 | 926/2263 | 90/363 |
| SUCCESS | 25% | 29% | 22% |
| R01 | 163/717 | 646/2357 | |
| SUCCESS | 23% | 27% | |
| TOTAL | 1264/4588 | 28% | |

NCI RESEARCH GRANTS PRELIMINARY GENDER FUNDING \$\$ DISTRIBUTION

| 1992 | FEMALE | MALE | UNKNOWN |
|-------------|---------------|-------------|----------------|
| % grants | 17 | 81 | 2 |
| % dollars | 12 | 87 | 1 |
| 2002 | | | |
| % grants | 22 | 73 | 5 |
| % dollars | 18 | 79 | 4 |

Summary of 2003 AACR Award Nominations Presentations at 95th AACR Annual Meeting in Orlando, Florida

| Award | Total # Nominations received in 2003 | # Women Candidates |
|---|--|-----------------------|
| Landon-Basic | 28 | 1 |
| Landon-Translational | 14 | 3 |
| Pezcoller | 20 | 2 |
| American Cancer Society | 12 | 0 |
| Burchenal | 9 | 1 |
| Cain | 7 | 1 |
| Clowes | 16 | 2 |
| Goodman | 8 | 0 |
| Outstanding Achievement in Cancer Research (formerly Rhoads) | 9 | 2 |
| Rosenthal | 7 | 0 |
| WICR-Friend | 10 | 10 |
| Professorship | 4 | 0 |
| CRPF Award | 36 | 8 |
| TOTAL | 180 | 30 |