



CONFERENCE PROGRAM AND SCHEDULE

Friday, November 13

11:30 a.m.-1:00 p.m. MICR Professional Advancement Session
Atlanta Ballroom

1:00 p.m.-2:00 p.m. Lunch on Own

2:00 p.m.-3:30 p.m. Educational Sessions 1 and 2 (Concurrent)

Educational Session 1: Lung Cancer
Capitol Ballroom

Session Chairperson: Ann G. Schwartz, Barbara Ann Karmanos Cancer Institute, Detroit, MI

Smoking cessation interventions to reduce disparities in lung cancer mortality
Jennifer S. Haas, Brigham and Women's Hospital, Boston, MA

Genetic, environmental, and biological contributions to racial disparities in lung cancer incidence
Brid M. Ryan, National Cancer Institute, Bethesda, MD

Lung cancer risk in African Americans: Familial aggregation and genetic susceptibility
Ann G. Schwartz

Educational Session 2: Interventional Studies in Special Populations and Disparities
Atlanta Ballroom

Session Chairperson: Amelie G. Ramirez, University of Texas Health Science Center at San Antonio, San Antonio, TX

Title to be announced
Olufunmilayo I. Olopade, University of Chicago, Chicago, IL

A GPS for cancer care: How patient navigation engages Latinos in preventing and reducing health disparities
Amelie G. Ramirez

Leveraging the NIH CHE P30 supplement as a platform to stimulate a cancer center strategic plan for addressing community cancer needs and enhancing health equity
Kimlin T. Ashing, City of Hope, Duarte, CA

3:30 p.m.-5:00 p.m. Educational Sessions 3 and 4 (Concurrent)

Educational Session 3: Blood/Hematological Cancers
Capitol Ballroom

Session Chairperson: Cheryl L. Willman, University of New Mexico Cancer Center, Albuquerque, NM

Outcome disparities in multiple myeloma: The role of race/ethnicity

Sikander Ailawadhi, Mayo Clinic Cancer Center Jacksonville, Jacksonville, FL

Mechanisms and signaling pathways involved in regulation of activating and inhibitory T cell responses

Vassiliki A. Boussiotis, Beth Israel Deaconess Medical Center, Boston, MA

Title to be announced

Cheryl L. Willman

Educational Session 4: Disparities/Equity in Oncology Treatment and Prevention: Practice, Policy, and Cost Barriers and Solutions

Atlanta Ballroom

Session Chairperson: S. Yousuf Zafar, Duke Cancer Institute, Durham, NC

Intervening on the financial toxicity of cancer care

S. Yousuf Zafar

Financial distress in patients with cancer: Contributing factors and potential solutions

Veena Shankaran, University of Washington, Seattle, WA

Discussion

5:00 p.m.-6:30 p.m. MICR Council Meet and Greet/ Dinner on Own

6:30 p.m.-8:15 p.m.

Welcome/Opening Session

Capitol Ballroom

Keynote Lecture:

Understanding and overcoming cancer disparities in the U.S. and abroad



Douglas R. Lowy, MD

Acting Director, National Cancer Institute, Bethesda, MD

Douglas Lowy is acting director of the National Cancer Institute and Chief of the intramural Laboratory of Cellular Oncology in the Center for Cancer Research at the NCI. He received his medical degree from New York University School

of Medicine, and trained in internal medicine at Stanford University and dermatology at Yale University. His research includes papillomaviruses and the regulation of normal and neoplastic growth. The papillomavirus research is carried out in close collaboration with John Schiller, with whom he has co-authored more than 100 papers over the past 25 years. In the 1980s, he studied the genetic organization of papillomaviruses and identified the oncogenes encoded by the virus. More recently, he has worked on papillomavirus vaccines and the papillomavirus life cycle. Their laboratory was involved in the initial development, characterization, and clinical testing of the preventive virus-like particle-based HPV vaccines that have been approved by the U. S. Food and Drug Administration and many other countries. It is for this body of work that Drs. Lowy and Schiller received the 2007 Federal Employee of the Year Award from the Partnership for Public Service, the 2007 Dorothy P. Landon-American Association for Cancer Research Prize for Translational Cancer Research, the Sabin Gold Medal in 2011, and the National Medal of Technology and Innovation from President Obama in 2014. Dr. Lowy also received the 2007 Medal of Honor for basic research from the American Cancer Society. He is listed by the Institute for Scientific Information as one of the most highly cited authors in microbiology, and is a member of the National Academy of Sciences and the Institute of Medicine of the NAS.

Komen Distinguished Lecturer:

To be announced

8:15 p.m.-10:15 p.m.

**Poster Session A/
Opening Reception**

Georgia Hall

Saturday, November 14

7:00 a.m.-8:00 a.m.

**Continental Breakfast and
Mentoring Roundtables**

Georgia Hall

8:00 a.m.-9:00 a.m.

**Focus Session 1: Translational
Sciences and Cancer Disparities –
What Do We Know and What Have
We Learned?**

Capitol Ballroom

Session Chairperson: Beti Thompson, Fred Hutchinson Cancer Research Center, Seattle, WA

**Addressing cervical cancer disparities in Appalachia:
From biology to policy**

Electra D. Paskett, Ohio State University Comprehensive Cancer Center, Columbus, OH

**Understanding and preventing breast cancer disparities
in Latinas**

Beti Thompson

**Multilevel sources of bias as determinants of treatment
disparities**

Terrance L. Albrecht, Barbara Ann Karmanos Cancer Institute, Detroit, MI



CONFERENCE PROGRAM AND SCHEDULE

9:00 a.m.-9:30 a.m.

Break

Georgia Foyer

9:30 a.m.-12:00 p.m.

**Plenary Session 1: Prevention –
Focus on Colorectal Cancer**

Capitol Ballroom

Session Chairperson: Jane Figueiredo, University of Southern California Keck School of Medicine, Los Angeles, CA

Colorectal cancer disparities: Opportunities in the screening continuum

Chyke A. Doubeni, University of Pennsylvania, Philadelphia, PA

Genetic and tumor molecular studies of colorectal cancer in Hispanics/Latinos

Jane Figueiredo

Diet, microbiome, and colorectal cancer risk in native Africans and African Americans

Stephen J. O'Keefe, Merck Research Laboratories, Rahway, NJ

Patient navigation and colorectal cancer screening among African Americans and Latinos

Lina H. Jandorf, Mt. Sinai Icahn School of Medicine, New York, NY

Systems-level intervention to increase CRC screening in community health centers*

Meera Muthukrishnan, Washington University School of Medicine, St. Louis, MO

Homologous recombination drives African American colorectal carcinogenesis*

Gaius J. Augustus, University of Arizona, Tucson, AZ

12:00 p.m.-1:30 p.m.

Lunch on Own

1:30 p.m.-4:00 p.m.

**Plenary Session 2: Diagnosis –
Focus on Breast Cancer**

Capitol Ballroom

Session Chairperson: Christine B. Ambrosone, Roswell Park Cancer Institute, Buffalo, NY

Elucidating the origins of aggressive breast cancer in African American women

Christine B. Ambrosone

Novel genetic variants in Latinas associated with breast cancer phenotype and mammographic density

Laura Fejerman, University of California, San Francisco, CA

Characterizing breast tumors within and across subtypes and racial/ethnic groups

Charles M. Perou, University of North Carolina at Chapel Hill, Chapel Hill, NC

Mammographic density: A risk factor for all breast cancers or only specific subtypes?

Celine M. Vachon, Mayo Clinic, Rochester, MN

A reverse, racial disparity with respect to interval breast cancer rates within a large healthcare organization has implications for eliminating disparities more generally*

Garth H. Rauscher, University of Chicago, Chicago, IL

The molecular biology of nuclear and mitochondrial regulatory noncoding RNAs differs between white and African American patients with triple-negative breast cancer*

Isidore Rigoutsos, Thomas Jefferson University, Philadelphia, PA

4:00 p.m.-4:30 p.m.

Break

Georgia Foyer

4:30 p.m.-5:30 p.m.

**Educational Session 5:
Immunotherapy and Cancer Health Disparities**

Capitol Ballroom

Session Chairperson: Alex A. Adjei, Roswell Park Cancer Institute, Buffalo, NY

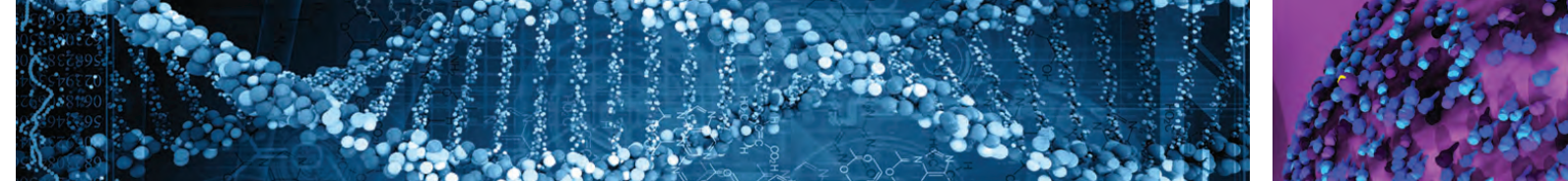
Immune checkpoint inhibitors, race, and ethnicity

Alex A. Adjei

Lung cancer: Disparities and implications for immunotherapy

Suresh S. Ramalingam, Emory University Winship Cancer Institute, Atlanta, GA

*Short talks from proffered papers



Immunotherapy: Is it within everyone’s reach?
Lupe G. Salazar, University of Washington, Seattle, WA

9:00 a.m.-9:30 a.m. Break
Georgia Foyer

5:30 p.m.-7:30 p.m. Poster Session B/Reception
Georgia Hall

9:30 a.m.-12:00 p.m. Plenary Session 3: Treatment – Focus on Gynecological Cancers
Capitol Ballroom

Sunday, November 15

7:00 a.m.-8:00 a.m. Continental Breakfast and Mentoring Roundtables
Georgia Hall

Session Chairperson: Andrea Wahner Hendrickson, Mayo Clinic, Rochester, MN

Approaching “precision disparities” in cervical cancer outcomes
Erin N. Kobetz, University of Miami Miller School of Medicine, Miami, FL

8:00 a.m.-9:00 a.m. Focus Session 2: NCI’s Community Oncology Research Program (NCORP) as a Laboratory for Cancer Disparities Research
Capitol Ballroom

Molecular epidemiology of ovarian cancer
Joellen M. Schildkraut, University of Virginia School of Medicine, Charlottesville, VA

The molecular biology of cancers of the ovary, endometrium, and cervix
Michael J. Birrer, Massachusetts General Hospital, Boston, MA

Session Chairperson: Wortia McCaskill-Stevens, National Cancer Institute, Rockville, MD

Overview of NCORP the Network
Wortia McCaskill-Stevens

Updates in gynecologic oncology: The state of ovarian cancer care
Andrea Wahner Hendrickson

NCORP cancer care delivery research: A new opportunity for studying cancer disparities
Ann M. Geiger, National Cancer Institute, Bethesda, MD

Dietary quality and ovarian cancer risk in African American women*
Bo Qin, Rutgers Cancer Institute of New Jersey, New Brunswick, NJ

Conducting precision medicine research in the NCI Community Oncology Research Program
Chanita Hughes-Halbert, Medical University of South Carolina Hollings Cancer Center, Charleston, SC

Racial/ethnic variation in the prevalence of vaccine-preventable human papillomavirus genotypes*
Indu Varier, Baylor College of Medicine, Houston, TX

Race, ethnicity, and outcomes in breast cancer
Joseph A. Sparano, Albert Einstein College of Medicine, Bronx, NY

12:05 p.m.-1:30 p.m. Lunch on Own

*Short talks from proffered papers



CONFERENCE PROGRAM AND SCHEDULE

1:30 p.m.-4:00 p.m. **Plenary Session 4: Survivorship and Quality of Life – Focus on Prostate Cancer**
 Capitol Ballroom

Session Chairperson: Curtis A. Pettaway, The University of Texas MD Anderson Cancer Center, Houston, TX

Evaluating methods of improving quality of life for cancer patients and improving acceptance of screening practices among cancer patients and their families

Sharon L. Manne, Rutgers-The Cancer Institute of New Jersey, New Brunswick, NJ

Biological bases of prostate cancer disparities in African American men

Isaac J. Powell, Barbara Ann Karmanos Cancer Institute/Wayne State University, Detroit, MI

Prostate Cancer Outreach Program: Education and early detection among medically underserved men

Curtis A. Pettaway

Urine tests for detecting prostate cancer

Martin G. Sanda, Emory University School of Medicine, Atlanta, GA

Racial and ethnic differences in dietary intake, physical activity and body mass index (BMI) among cancer survivors: 2005 and 2010 National Health Interview Surveys (NHIS)*

Doratha Armenthus Byrd, National Cancer Institute, Rockville, MD

4:00 p.m.-4:30 p.m. **Break**
 Georgia Foyer

4:30 p.m.-6:30 p.m. **Poster Session C/Reception**
 Georgia Hall

Monday, November 16

7:00 a.m.-8:00 a.m. **Continental Breakfast and Mentoring Roundtables**
 Georgia Hall

8:00 a.m.-9:00 a.m. **Focus Session 3: Forum on Precision Medicine: Unique Opportunities and Challenges for Cancer Disparities Research**
 Capitol Ballroom

Session Chairperson: Sarah Gehlert, Washington University, St. Louis, MO

NCI-MATCH: A national precision medicine trial – Conception, development, and adjustment

Barbara A. Conley, National Cancer Institute-DCTD, Rockville, MD

Racial/ethnic representation in oncology drug development in the era of personalized medicine


Ibilola A. Fashoyin-Aje, U. S. Food and Drug Administration, Silver Spring, MD

Maximizing the benefits of precision medicine for cancer disparities

Sarah Gehlert

9:00 a.m.-9:30 a.m. **Break**
 Georgia Foyer

*Short talks from proffered papers



9:30 a.m.-12:00 p.m. **Plenary Session 5: Global Cancers/
Global Health**
Capitol Ballroom

Session Chairperson: Lisa A. Newman, University of Michigan
Comprehensive Cancer Center, Ann Arbor, MI

**Genetic susceptibilities and lifestyle factors in black
populations**

Camille C. R. Ragin, Fox Chase Cancer Center, Philadelphia, PA

Title to be announced

Lisa A. Newman

Promoting science and discovery through global health

Thomas Gross, National Cancer Institute Center for Global
Health, Rockville, MD

Title to be announced

Douglas Morgan, Vanderbilt University, Nashville, TN

**The role of genetic structure in Colombian coastal and
Andean populations on disparities in colorectal adenomas
and cancer risk***

Maria Carolina Sanabria-Salas, Instituto Nacional de
Cancerología, Bogota, Columbia

**Breast cancer in western Kenya is aggressive with early
onset and immune cell infiltration with suppression of the
adaptive immune response***

Laurie Littlepage, University of Notre Dame, Notre Dame, IN

12:00 p.m.-12:15 p.m. **Closing Remarks**
Capitol Ballroom

*Short talks from proffered papers