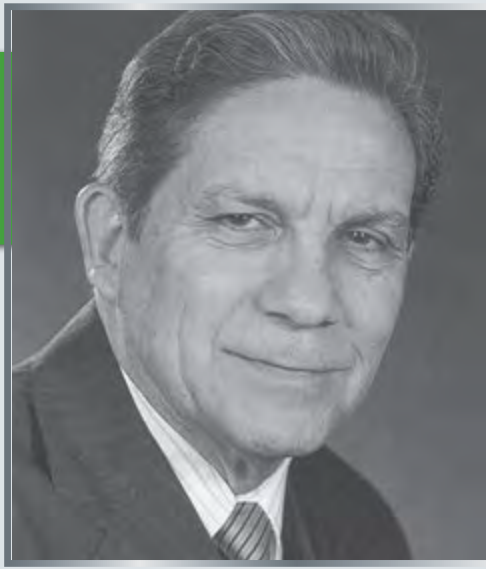


1991

AACR Launches Cancer Epidemiology, Biomarkers & Prevention



PELAYO CORREA, MD,
FOUNDING EDITOR-IN-CHIEF, 1991-1997

An international expert on the epidemiology of gastric cancer, Dr. Correa has conducted extensive studies of the relationship of *Helicobacter pylori* infections to the onset of stomach cancer. He has mapped the progression from inflammation to atrophy to dysplasia, a progression termed the Correa Cascade. His interest in stomach cancer began with a study of subpopulations in his native Columbia and has progressed to the study of the effects of different strains of *H. pylori* in populations worldwide. Dr. Correa was chief of the Section of Epidemiology at Louisiana State University Medical Center; after Hurricane Katrina destroyed his laboratory, he moved to Vanderbilt University Medical Center.

Inaugural Editorial



First Table of Contents

1992

First Impact Factor: 3.636

1997

Antibiotic Treatment that Eliminates *Helicobacter pylori* Infection Prevents Gastric Cancer Recurrence

HIGHLY CITED ARTICLE

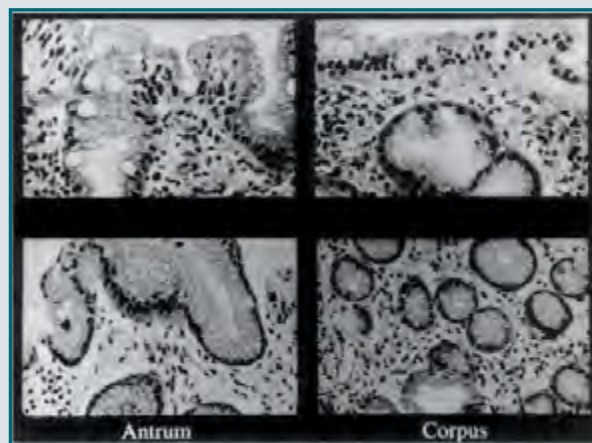
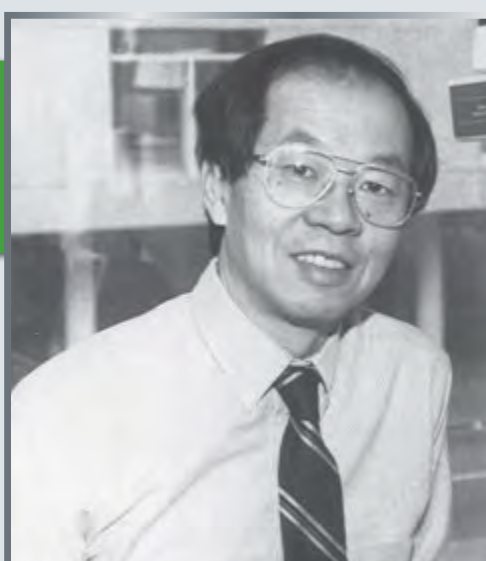


FIGURE 2. The biopsy from the greater curvature of antrum (left) and body (Corpus, right; H&E staining) at the time of ER are shown at the top and those taken at 6 months after eradication as shown at the bottom. The neutrophil infiltration in the antrum and body of stomach before the treatment mostly disappeared after the treatment. The incomplete intestinal metaplasia, observed particularly in the antrum before treatment, considerably decreased after treatment.

1998

Molecular Epidemiologist Named Editor



FREDERICK P. LI, MD,
EDITOR-IN-CHIEF, 1998-2002

SCIENTIFIC
PUBLISHING
CENTENNIAL

1916-2016

AACR American Association for Cancer Research

2003

AACR Appoints First Co-Editors



JOHN D. POTTER, MD, PHD,
CO-EDITOR, 2003-2008



DAVID ALBERTS, MD, CO-EDITOR, 2003-2008

2007

Phase I Study of Resveratrol Therapy Indicates Reaching Efficacious Levels Difficult by Oral Administration

HIGHLY CITED ARTICLE

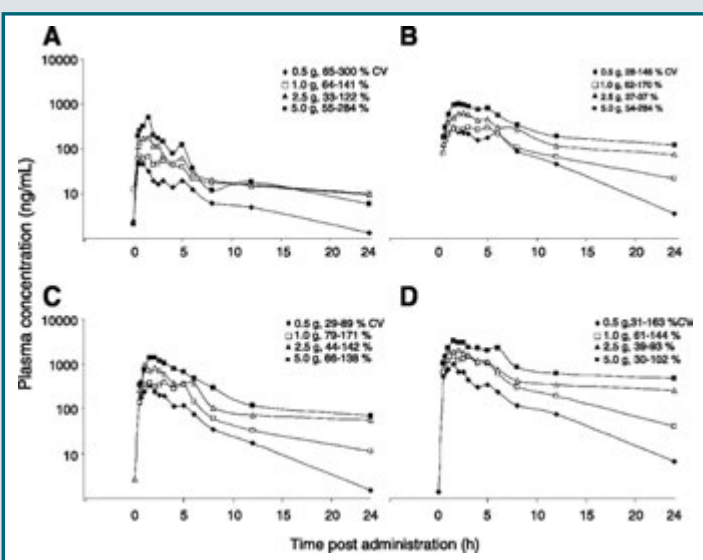


FIGURE 2. Mean plasma concentrations of resveratrol (A), two resveratrol monoglucuronides (B and C), and resveratrol-3-sulfate (D) versus time in healthy volunteers who received a single dose of resveratrol at 0.5 (♦), 1 (□), 2.5 (▲), or 5 g (●). Points, mean of 10 volunteers per dose level. Insets, coefficients of variation.

2008

Penn Epidemiologist Appointed Editor-in-Chief



TIMOTHY R. REBBECK, PHD,
EDITOR-IN-CHIEF, 2008-PRESENT

2009

Implementing More Sensitive Diagnostic Procedures Does Not Completely Explain Increases in Papillary Thyroid Cancer Incidence

HIGHLY CITED ARTICLE

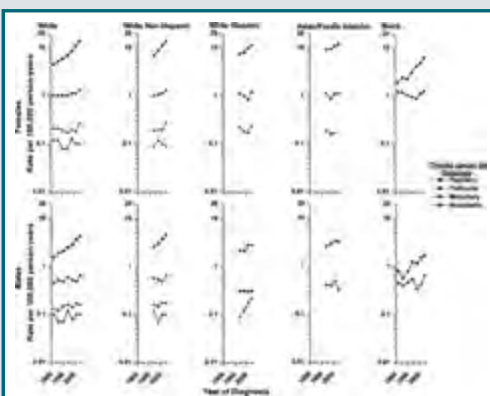


FIGURE 1. Histology-specific trends in thyroid cancer incidence in SEER diagnosed from 1980-1983, to 2003-2005 by sex and race/ethnicity. Rates are age-adjusted (2000 U.S. standard population), and each point represents 3 or 4 y. Nine regions were included for Whites and Blacks, and 11 for White non-Hispanics, White Hispanics, and Asian/Pacific Islanders.

SCIENTIFIC
PUBLISHING
CENTENNIAL

1916-2016

AACR American Association for Cancer Research