

Schedule at-a-Glance

Friday, December 6

11:30 a.m.-1:00 p.m. **Professional Advancement Session**

Cancer Health Disparities Researcher in an Academic Medical Center—What's in a Name?

Chairperson: Chanita Hughes-Halbert, Capitol North, p. 24

1:00 p.m.-2:30 p.m. **Educational Sessions 1-2**

Opportunities and Challenges of Using Technology to Address Health Disparities

Chairperson: B. Lee Green, Grand Ballroom D-F, p. 25

Next-Gen Sequencing

Chairperson: Jeffrey N. Weitzel, Capitol North, p. 26

2:45 p.m.-4:15 p.m. **Educational Sessions 3-4**

Tailored Health Communications to Address Cancer Disparities

Chairperson: Amelie G. Ramirez, Capitol North, p. 27

PSA and Prostate Cancer Screening

Chairpersons: Nathan A. Ellis and Rick A. Kittles, Grand Ballroom D-F, p. 28

4:30p.m.-5:30 p.m. **Meet-the-Expert Session**

Chairperson/Moderator: Amelie G. Ramirez, Grand Ballroom D-F, p. 29

5:30 p.m.-6:30 p.m.

Policy Forum

Diversity in Biomedical Research

Chairperson: Jon Retzlaff, Grand Ballroom D-F, p. 30

6:30 p.m.-8:15 p.m.

Opening Plenary Session

Grand Ballroom D-F, p. 31

Keynote Address

An Agenda for Cancer Health Disparities

Otis Webb Brawley, American Cancer Society, Atlanta, GA

4th Annual AACR Distinguished Lectureship on Cancer Health Disparities, funded by Susan G. Komen®
Eliminating Cancer Health Disparities: Can It Be Done?

Beti Thompson, Fred Hutchinson Cancer Research Center, Seattle, WA, and University of Washington, Seattle, WA

8:15 p.m.-10:15 p.m.

Poster Session A and Opening Reception

Grand Ballroom A-C, p. 34

Alcohol, Tobacco, and Substance Abuse

Bioethics

Cancer Communications

Community-Based Interventions

Community-Based Participatory Research

Decision Making

Genetic Testing and Counseling

Health Education

Recruitment/Retention/Adherence Research

Socioeconomic Influences

Healthcare Systems

Treatment Factors and Outcomes

Head and Neck Cancers

Lung Cancer

Vaccines and Immunoprevention

Other

Saturday, December 7

8:00 a.m.-9:00 a.m. **Special Session 1**

Microbiome, Diet, and Cancer Disparities

Chairperson: Stephen J.D. O’Keefe, Grand Ballroom D-F, p. 40

9:00 a.m.-9:30 a.m. **Break**

Grand Registration and Prefunction

9:30a.m.-11:30 a.m. **Plenary Session 1**

Tumor Microenvironment Differences among African American and Caucasian Breast and Prostate Cancer Patients

Chairperson: Shafiq A. Khan, Grand Ballroom D-F, p. 41

11:30 a.m.-1:00 p.m. **Lunch Break (Lunch on Your Own)**

1:00 p.m.-3:00 p.m. **Concurrent Sessions 1-2**

Multiple Chronic Conditions: Implications in Underrepresented and Medically Underserved Populations

Chairperson: Richard A. Goodman, Capitol North, p. 42

Epigenetics of Adult Cancer Risk: Methylation, Imprinting, and Beyond

Chairperson: Catherine Hoyo, Grand Ballroom D-F, p. 43

3:00 p.m.-3:30 p.m.

Break

Grand Registration and Prefunction

3:30 p.m.-5:00 p.m.

Hot Topics in Cancer Health Disparities Research 1

Chairperson: Christopher I. Li, Grand Ballroom D-F, p. 44

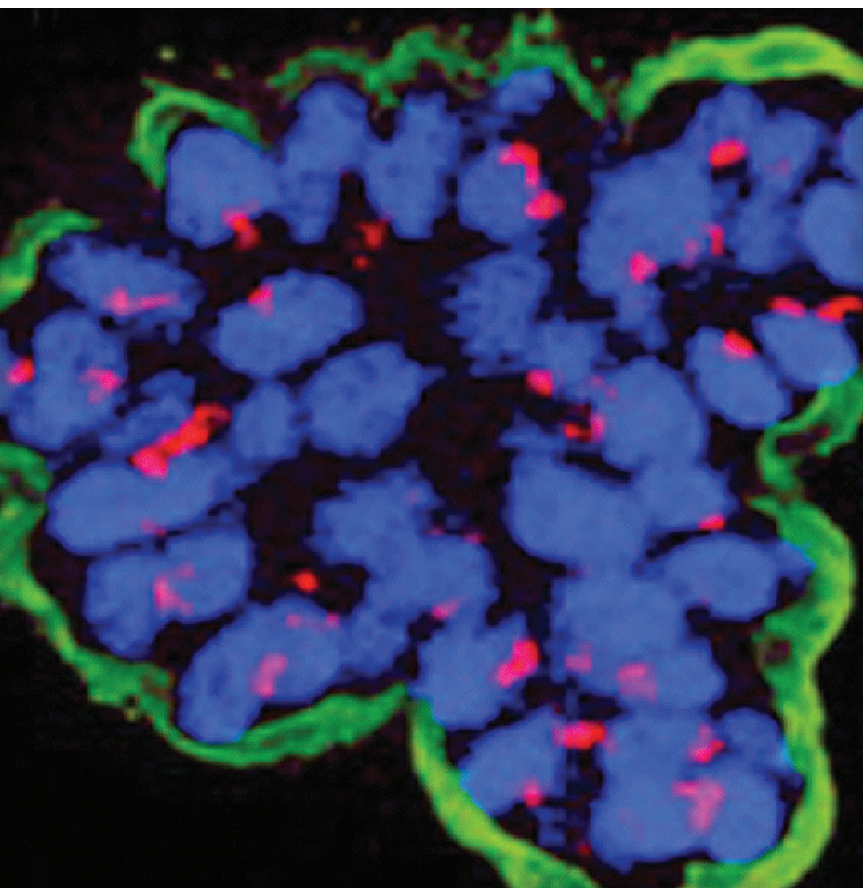
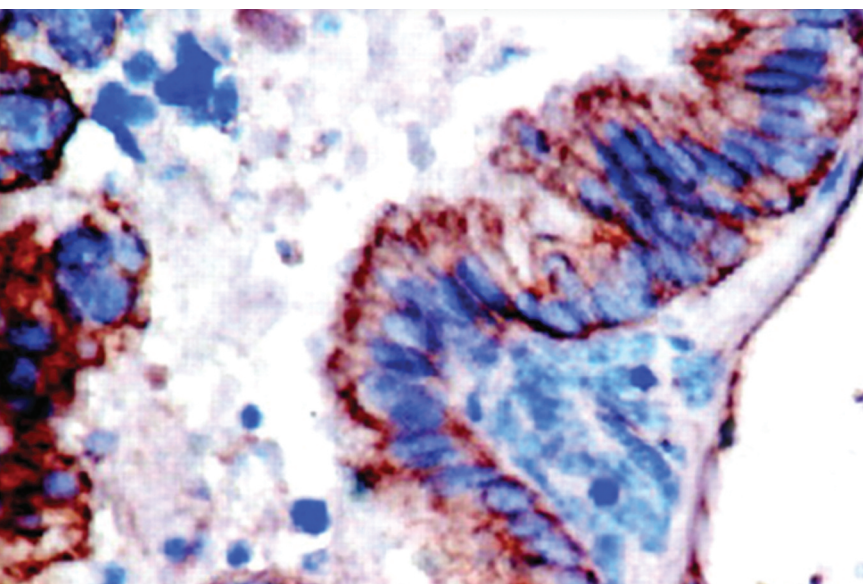
5:00 p.m.-7:00 p.m.

Poster Session B with Reception

Grand Ballroom A-C, p. 45

Behavioral Epidemiology
Diet and Nutrition
Exercise and Prevention
General Epidemiology and Biostatistics
Molecular Epidemiology
Neighborhood Factors
Obesity, Metabolism, and Cancer
Physical Activity and Energy Balance
Breast Cancer
Colorectal Cancer
Gastrointestinal Cancers
Genitourinary Cancers
Gynecological Cancers
Other Organ Sites
Clinical Prevention Trials
Preclinical Prevention Studies
Prevention Behaviors
Screening and Early Detection

Schedule at-a-Glance



Sunday, December 8

8:00 a.m.-9:00 a.m. **Special Session 2**

Population Differences in Alternative RNA Splicing: Potential Druggable Drivers of Tumor Phenotype and Disparities

Chairperson: Steven R. Patierno, Grand Ballroom D-F, p. 51

9:00 a.m.-9:30 a.m. **Break**
Grand Registration and Prefunction

9:30 a.m.-11:30 a.m. **Plenary Session 2**
Clinical Trials Outcomes in Patients from Different Populations

Chairperson: Judith S. Kaur, Grand Ballroom D-F, p. 52

11:30 a.m.-1:00 p.m. **Lunch Break**
(Lunch on Your Own)

1:00 p.m.-3:00 p.m. **Concurrent Sessions 3-4**
Understanding Second Cancers in Minority Populations: A Provocative Area for CHD Survivorship Research

Chairperson: Jacqueline N. Casillas, Grand Ballroom D-F, p. 53

Rare Cancers in Ethnic Minorities and the Medically Underserved

Chairperson: Bodour Salhia, Capitol North, p. 54

3:00 p.m.-3:30 p.m. Break
Grand Registration and Prefunction

3:30 p.m.-5:00 p.m. Hot Topics in Cancer Health Disparities Research 2

Chairperson: Scarlett L. Gomez, Grand Ballroom D-F, p. 55

5:00 p.m.-7:00 p.m. Poster Session C with Reception
Grand Ballroom A-C, p. 56

Administrative and Large-Scale Database Methods
Bioinformatics
Neighborhood Analysis
Biomarkers in Cancer Surveillance and Screening
Biomarkers in Intervention Studies
Biomarkers of Risk and Surrogate Endpoints
Molecular Diagnostics
Drug Design, Discovery, and Delivery
Late Effects/Survivorship
Mechanisms of Drug Action
Palliative Care and Pain Management
Proteomics, Chemogenomics, and Chemoinformatics
Quality of Life
Second Cancers
Tumor Promotion and Progression
Angiogenesis and Invasion
Cancer Genetics/Gene Expression
Cell Growth Signaling Pathways
DNA Methylation/Epigenetics and Chromatin Regulation
Oncogenes/Tumor Suppressor Genes
Race, Admixture, and Ethnicity
Tobacco and Cancer
Other Risk Factors
Other

Monday, December 9

8:00 a.m.-9:00 a.m. Special Session 3

Precision/Personalized Medicine: Promise and Pitfalls

Chairperson: Ngina Lythcott, Grand Ballroom D-F, p. 63

9:00 a.m.-9:15 a.m. Break
Grand Registration and Prefunction

9:15 a.m.-11:15 a.m. Plenary Session 3

With a Vision to the Future: Novel Concepts in Stem Cell-Driven Cancers

Chairpersons: Lisa Newman and Victoria L. Seewaldt,
Grand Ballroom D-F, p. 64

11:15 a.m.-12:15 p.m. Point/Counterpoint Session

Colorectal Cancer Screening for African Americans: Should We Be Screening at an Earlier Age?

Chairperson/Moderator: Elena Martinez, Grand Ballroom D-F, p. 65

12:15 p.m.-12:30p.m. Closing Remarks
Grand Ballroom D-F