

Poster Session A

Wednesday, February 17, 2016
5:30 p.m.-7:30 p.m.
Regency Ballroom

Cancer genomes

- A001 Estrogen-mediated amplification of enhancers leads to aberrant oncogene expression in advanced ER alpha-positive breast cancer.** Tim H.-M. Huang.
- A002 Amplification and overexpression of the EMSY gene in NSCLC.** Ayşe N Buyru, Onur Baykara , Bulut Pelin, Mehmet Dalay.
- A003 Genetic and histological stability of 1p/19q co-deleted gliomas at recurrence.** Koki Aihara, Keisuke Ueki, Akitake Mukasa, Hiroyuki Aburatani, Phyo Kim.
- A004 Acid suppression required to generate gastric carcinoid tumors in mice with deleted Men1 and Somatostatin loci.** Sinju Sundaresan, Anthony Kang, Juanita L Merchant.
- A005 Metastatic pathway-specific transcriptome analysis identifies MFSD4 as a putative tumor suppressor and biomarker for hepatic metastasis in patients with gastric cancer.** Mitsuro Kanda, Dai Shimizu, Haruyoshi Tanaka, Satoshi Sueoka, Naoki Iwata, Masamichi Hayashi, Daisuke Kobayashi, Chie Tanaka, Suguru Yamada, Tsutomu Fujii, Goro Nakayama, Hiroyuki Sugimoto, Masahiko Koike, Michitaka Fujiwara, Yasuhiro Kodera.
- A006 Germline PARP4 mutations in patients with primary thyroid and breast cancers.** Yuji Ikeda, Kazuma Kiyotani, Poh Yin Yew, Kato Taigo , Kenji Tamura, Kai Lee Yap, Sarah M Nielsen, Jessica L Mester, Raymon H Grogan, Charis Eng, Yusuke Nakamura.
- A007 Cancer evolution simulation identifies possible principles underlying intratumor heterogeneity.** Atsushi Niida, Satoru Miyano.
- A008 Low-frequency mutational heterogeneity of breast cancer subtypes, including TNBC, revealed by sensitive and quantitative allele-specific PCR analyses.** Meagan B Myers, Malathi Banda, Nysia I George, Karen L McKim, Barbara L Parsons.
- A009 Integrated genomic characterization of non-small cell lung cancer cell lines.** Sakae Saito, Ikuko N Motoike, Kengo Kinoshita, Jun Yasuda, Hirofumi Ishii, Masayuki Yamamoto.
- A010 Using mutational signatures to dissect the role of aristolochic acid in renal cell carcinoma and other cancers.** Margaret L Hoang, Chung-Hsin Chen, Pau-Chung Chen, Viktoriya S Sidorenko, Kathleen G Dickman, Byeong Hwa Yun, Masaaki Moriya, Robert J Turesky, Yeong-Shiau Pu, Bert Vogelstein, Nickolas Papadopoulos, Arthur P Grollman, Kenneth W Kinzler, Thomas A Rosenquist.
- A011 DNA copy number gains in malignant pleural mesothelioma.** Masashi Furukawa, Shinichi Toyooka, Tatsuro Hayashi, Hiromasa Yamamoto, Nobukazu Fujimoto, Junichi Soh, Shinsuke Hashida, Kazuhiko Shien, Hiroaki Asano, Keisuke Aoe, Kazunori Okabe, Harvey I Pass, Kazunori Tsukuda, Takumi Kishimoto, Shinichiro Miyoshi.

A012 Targeted Next-Generation Sequencing Panel for Detection of Mutations in Breast Cancer. Hsuan-Yu Chen, Yi-Chiung Hsu, Sung-Liang Yu, Huei-Wen Chen, Jeremy J.W. chen, Sheng-Fang Su, Ker-Chau Li.

A013 Two-step forward genetic screens in mice identified multiple hepatocellular carcinoma driver genes and a new therapeutic target. Takahiro Kodama, Justin Newberg, Robert Rangel, Michiko Kodama, Kosuke Yoshihara, Nancy Jenkins, Neal Copeland.

A014 Genome-wide approach to pediatric pancreatoblastoma. Masafumi Seki, Isobe Tomoya, Kenichi Yoshida, Yuichi Shiraishi, Kenichi Chiba, Hiroko Tanaka, Yusuke Sato, Keisuke Kataoka, Yoichi Fujii, Hiromichi Suzuki, Teppei Shimamura, Motohiro Kato, Akihiro Iguchi, Asahito Hama, Tomoaki Taguchi, Yukichi Tanaka, Junya Fujimura, Akiko Inoue, Tsuyoshi Ito, Takao Deguchi, Satoru Miyano, Yasuhide Hayashi, Akira Oka, Seishi Ogawa, Junko Takita.

A015 Clonal origin of therapy-related myeloid neoplasms. Koichi Takahashi, Feng Wang, Hagop Kantarjian, Doss Denaha, Erika Thompson, Keyur Patel, Sattva Neelapu, Curtis Gumbs, Yan Wang, Zachary Bohannon, Courtney DiNardo, Simona Colla, Jianhua Zhang, Xifeng Wu, Guillermo Garcia-Manero, Andrew Futreal.

A016 Molecular epidemiological analysis of oral cancer in the Indian population reveals region-specific differences in the spectrum of driver mutations and oncogenic pathways. Ravi Gupta, Vedam Laxmi Ramprasad, Kartik Kumaramangalam, Arati Khanna Gupta, Sam Santhosh, Amitabha Chaudhuri.

A018 DNA probes in the genetic diagnosis and its prognostic factors of Kazakh esophageal cancer patients. Maidiniyeti Niyazi.

A019 Detection of multiple low-frequency mutations by molecular-barcode sequencing. Kei Namba, Shuta Tomida, Ken Suzawa, Hiromasa Yamamoto, Yuho Maki, Junichi Soh, Kazunori Tsukuda, Shinichiro Miyoshi, Shinichi Toyooka.

A020 Suppression of SAMSIN1 Expression is Associated with the Malignant Phenotype of Hepatocellular Carcinoma. Satoshi Sueoka, Kanda Mitsuro.

A021 TFF1 (Treff Factor Family 1) act as tumor suppressor to prevent invasive transformation of pancreatic cancer. Junpei Yamaguchi, Yukihiko Yokoyama, Toshio Kokuryo, Masato Nagino.

A022 UHRF2 induced by TGF- β is a new negative regulator of EMT. Tomohiro Iguchi, Msami Ueda, Shinya Kidogami, Hisateru Komatsu, Sho Nambara, Yushi Ogawa, Kuniaki Sato, Qingjiang Hu, Tomoko Saito, Hidenari Hirata, Shotaro Sakimura, Ryutarou Uchi, Naoki Hayashi, Shuhei Ito, Hidetoshi Eguchi, Takaaki Masuda, Koshi Mimori.

A023 Defining context-specific genetic vulnerabilities in human cancer cells. Eun Jee Koh, Traver Hart, Jason Moffat.

A024 Detection of new pathways for tumor progression to CRPC using computational gene network based on differential gene expression profile. Aiko Sugiyama.

A025 When Detecting Somatic Variants in Cancer Genomes, Is it Necessary to Sequence Matched Normal Tissue?. Michael James Clark, Elena Helman, Sean Michael Boyle, Ravi Alla, Selene Virk, Deanna Church, Shujun Luo, Gabor Bartha, Jason Harris, Nan Leng, Christian Haudenschild, Martina Lefterova, Massimo Morra, Sarah Garcia, Richard Chen, John West.

A026 p53 regulates cancer cell migration and invasion through FOXF1. Takashi Tokino, Miyuki Tamura, Masashi Idogawa, Yasushi Sasaki.

A027 A 3D imaging platform to stratify and monitor patients based on their level of genomic instability. Sabine Mai, Cheryl Taylor-Kashton, Celina Li, Doris Chang, Chirawadee Sathitruangsak, Julius A Awe, Jeff Saranchuk, Darrel Drachenberg, Rami Kotb, Hans Knecht.

A028 Genetic difference between multicentric carcinogenesis and intrahepatic metastasis of hepatocellular carcinoma. Yutaka Midorikawa, Shogo Yamamoto, Kenji Tatsuno, Hiroki Ueda, Shingo Tsuiji, Genta Nagae, Tadatoshi Takayama, Hiroyuki Aburatani.

DNA damage and repair

A029 Proteomics of site-specific ADP-ribosylation profiling of DNA-dependent PARPs and histones.. Jean-Philippe Gagne, Marie-France Langelier, Amanda A Riccio, John M Pascal, Daniel Figeys, Guy G Poirier.

A030 Estrogen induces RAD51C expression and localization to sites of DNA damage.. Marina K Holz.

A031 Oxypeucedanin-mediated Growth Inhibition by G₂/M Phase Cell Cycle Arrest in Human Hepatoma SK-Hep-1 cells. So Hyun Park, Ji-Young Hong, Jinwoong Kim, Sang Kook Lee.

A032 Roles of RUNX proteins in DNA damage repair. Vaidehi Krishnan, Lavina Tay, Yoshiaki Ito.

A033 In vivo and in vitro studies investigating the use of acetaminophen as a cisplatin chemosensitizing agent. Alexander Neuwelt, Tam Nguyen, Jeffrey Wu, Leslie Muldoon, Edward A Neuwelt.

A034 Epigenetic dysregulation of satellite RNAs expression in senescent cells. Akiko Takahashi, Yoshinori Imai, Eiji Hara.

A035 Hypoxia suppresses DNA repair in colon cancer stem cells which sensitizes them to hypoxia-activated pro-drugs. Jennifer Jongen, Kari Trumpi, Lizet van der Waals, Onno Kranenburg, Inne Borel Rinkes.

A036 Sensing and signaling of DNA damage by master checkpoint kinase ATM and ATR. Bunshyo Shiotani, Hitoshi Zembutsu.

A037 BRCA status prediction in breast cancer by gamma-tubulin immunofluorescence. Gou Watanabe, Chiba Natsuko, Tadashi Nomizu, Akihiko Furuta, Minoru Miyashita, Hiroshi Tada, Akihiko Suzuki, Takanori Ishida, Noriaki Ohuchi.

A038 Search for Lynch-syndrome patients by screening of sporadic cases of endometrial cancer; expression analysis of mismatch-repair genes both in early and advanced lesions. Harumi Saeki, Kazunori Kajino, Okio Hino.

A039 Functional effects of mutL-alpha genes on prostate cancer cell. Shinichiro Fukuhara, Yozo Mitsui, Ryan K Wong, Mitsuho Imai-Sumida, Soichiro Yamamura, Shahana Majid, Sharanjot Saini, Varahram Shahyari, Guoren Deng, Rajvir Dahiya, Hiroaki Shiina, Norio Nonomura, Yuichiro Tanaka.

Epigenetics

A040 Hookah Smoke Induces Epigenomic Alterations and Gene Expression Profiles Similar to those Mediated by Cigarette Smoke in Normal and Immortalized Human Respiratory Epithelia and Lung Cancer Cells. Yin Xiong, Sichuan Xi, Jigui Shan, Elvin Hekimoglu, Mary Zhang, Said Azoury, Julie A Hong, David S. Schrupp.

- A041 Novel phosphorylation of CENP-A contributes to chromosomal instability and cancer progression.** Mamoru Takada, Weiguo Zhang, Aussie Suzuki, Taruho Kuroda, Zhouliang Yu, Hiroyuki Inuzuka, Christopher Fry, Guohong Li, David Pellman, GARY KARPEN, Wenyi Wei, [Qing Zhang](#).
- A042 Invention of DNA methylation markers for diagnosis of pancreatic cancer.** [Keiko Shinjo](#), Keisuke Katsushima, Genta Nagae, Hiroyuki Aburatani, Kenji Yamao, Yutaka Kondo.
- A043 Critical roles of the c-Myb/c-Kit pathway in maintenance of leukemia stem cells.** [Yukiko Aikawa](#), Issay Kitabayashi.
- A044 Epigenome landscape of human normal purified hepatocytes and genome-epigenome interaction: analysis by the International Human Epigenome Consortium (IHEC).** [Eri Arai](#), Fumihito Miura, Yasushi Totoki, Satoshi Yamashita, Ying Tian, Masahiro Gotoh, Hidenori Ojima, Hiroyuki Nakagawa, Yoriko Takahashi, Hiromi Nakamura, Natsuko Hama, Mamoru Kato, Hiroshi Kimura, Yutaka Suzuki, Takashi Ito, Tatsuhiko Shibata, Yae Kanai.
- A045 DNA methylation modifies the association between obesity and survival after breast cancer diagnosis.** [Lauren McCullough](#), Jia Chen, Yoon Hee Cho, Nikhil Khankari, Patrick Bradshaw, Alexandra White, Gail Garbowski, Susan Teitelbaum, Mary Beth Terry, Alfred Neugut, Hanina Hibshoosh, Regina Santella, Marilie Gammon.
- A046 Angiogenin contributes to bladder cancer tumorigenesis by regulating DNMT3b-induced MMP2 gene methylations.** [Hideki Furuya](#), Rafael Peres, Ian Pagano, Yoshiko Shimizu, Kanani Hokutan, Joanna Gawecka, Kazukuni Hayashi, Charles Joel Rosser.
- A047 Analysis of epigenetic research in cancer epidemiology to identify trends and opportunities .** [Mukesh Verma](#).
- A049 Presence of aberrant promoter methylation in oral leukoplakia with high-risk of malignant transformation.** [Masanobu Abe](#), Satoshi Yamashita, Yoshiyuki Mori, Takahiro Abe, Hideto Saijo, Kazuto Hoshi, Toshikazu Ushijima, Tsuyoshi Takato.
- A050 MLL is essential for NUP98-HOXA9-induced leukemia.** [Yutaka Shima](#), Minoru Yumoto, Issay Kitabayashi.
- A051 Characterizing expression and function of the tumor suppressor gene RARRES1 in the differentiation hierarchy of breast cancer.** [Krysta M Coyle](#), Patrick Murphy, Dejan Vidovic, Cheryl A Dean, Margaret L Thomas, Derek Clements, Mohammad Sultan, Ahmad Vaghar-Kashani, Carman Giacomantonio, Lucy Helyer, Ian Weaver, Shashi Gujar, Patrick WK Lee, Paola Marcato.
- A052 Potential epigenetic drivers in HPV-associated HNSCC: Assessment for biologic significance and functional impact.** [Maria J Worsham](#), Kang Mei Chen, Josena Stephen, Indrani Datta, George Divine.
- A053 Downregulation of DENND2D by promoter hypermethylation is associated with early recurrence of hepatocellular carcinoma.** [Haruyoshi Tanaka](#), Mitsuro Kanda, Dai Shimizu, Satoshi Sueoka, Masamichi Hayashi, Naoki Iwata, Daisuke Kobayashi, Chie Tanaka, Suguru Yamada, Goro Nakayama, Tsutomu Fujii, Hiroyuki Sugimoto, Masahiko Koike, Michitaka Fujiwara, Yasuhiro Kodera.
- A054 DNMT3A mutation maintains the leukemic stem cells by inducing gene-body methylation to develop acute myeloid leukemia.** [Yuki Kagiya](#), Yoko Ogawara, Issay Kitabayashi.
- A055 Methyl-CpG targeted transcriptional activation (MeTA) induces apoptosis in LNCaP human prostate cancer cells by reactivating hypermethylated genes.** [Toshiya Miyauchi](#), Akira Horii, Shinichi Fukushima.

A056 Critical role of SMYD3-mediated methylation in the oncogenic activity of AKT1. Yuichiro Yoshioka, Yusuke Nakamura, Ryuji Hamamoto.

A057 SUV420H1 enhances the phosphorylation and transcription of ERK1 in cancer cells. Theodore Vougiouklakis, Vassiliki Saloura, Yusuke Nakamura, Ryuji Hamamoto.

A058 Functional characterization of histone methyltransferases and demethylases in epithelial-mesenchymal transition of cancer cells. Takeshi Suzuki.

A059 Identification of aberrant DNA methylation associated with the development of traditional serrated adenoma. Hironori Aoki, Eiichiro Yamamoto, Hiro-o Yamano, Takeshi Niinuma, Masahiro Kai, Reo Maruyama, Yasushi Adachi, Takao Endo, Tamotsu Sugai, Hiromu Suzuki.

A060 Genome-wide identification of long noncoding RNAs epigenetically silenced by aberrant DNA methylation in colorectal cancer. Kohei Kumegawa, Reo Maruyama, Eiichiro Yamamoto, Hiroshi Kitajima, Takeshi Niinuma, Masahiro Kai, Hiro-o Yamano, Tamotsu Sugai, Takashi Tokino, Hiromu Suzuki.

A061 Age-related DNA methylation and altered gene expression precede loss of heterozygosity of the Apc gene in Apc^{Δ716} mice. Yoshihisa Okuchi, Masamichi Imajo, Rei Mizuno, Yuji Kamioka, Yoshiharu Sakai, Michiyuki Matsuda.

A062 The selective inhibitor of HDAC6 synergistically enhances the anticancer activity of immunomodulatory drugs in multiple myeloma. Hye-Rim Won, Hyun-Wook Ryu, So Hee Kwon.

A063 Notch-regulated multifunctional non-coding RNA maintains stemness in gliomas. Keisuke Katsushima, Keiko Shinjo, Kanjiro Miyata, Kazunori Kataoka, Yasushi Totoki Totoki, Tatsuhiro Shibata, Atsushi Natsume, Yutaka Kondo.

A064 Possible role of TET1 dysregulation in inducing aberrant DNA methylation in colorectal cancer. Hiromu Suzuki, Masahiro Kai, Takeshi Niinuma, Eiichiro Yamamoto, Reo Maruyama, Akira Yorozu, Kohei Kumegawa, Hironori Aoki, Tetsuya Shindo, Takashi Tokino, Kohzoh Imai.

A065 Precision Cancer Risk Diagnosis by Accumulation of Epigenetic Alterations. Masahiro Maeda, Takeshi Nakajima, Takao Maekita, Nobutake Yamamichi, Taichi Shimazu, Kiyoshi Asada, Toshikazu Ushijima.

Therapies based on signal transduction

A066 Protein knockdown by SNIPER compounds: Application for basic research and cancer therapy. Mikihiko Naito, Takayuki Hattori, Nobumichi Ohoka, Norihito Shibata, Takuji Shoda, Yosuke Demizu, Masaaki Kurihara.

A067 Targeting the Wnt signaling pathway in colorectal cancer: From biology to therapeutics. Mari Masuda, Yuko Uno, Hideki Moriyama, Masaaki Sawa, Tesshi Yamada.

A068 Orphan nuclear receptor NURR1 contributes to fenretinide-mediated apoptosis in breast carcinoma cells. Anthony Poche, Broussard J Kiera, Shawn D Llopis, Christopher C Williams.

A069 HCC-specific RNA replacement of hTERT-targeting trans-splicing ribozyme enhanced by post-transcriptional and microRNA regulation discloses more efficacy and safety of HCC-targeting gene therapy. Jin S. Jeong, Mi H. Ju, Sang Young Han, Seong W. Lee.

A070 Pharmacologic, pharmacodynamic action of MELK kinase inhibitor OTS167 in cancer cells. Suyoun Chung, Kyoko Kijima, Yosuke Harada, Naofumi Takamatsu, Yusuke Nakamura.

A071 LIF blockade as a potential therapeutic approach for K-Ras-mediated pancreatic cancers. Man-Tzu Wang, Jacqueline Galeas, Chen-Yen Yang, Eric Collisson, Frank McCormick.

A072 The Photosensitizer Verteporfin Targets the Hippo Pathway through YAP1 SUMOylation. Chao Wang, Kang Jeong, Gordon B. Mills, Jiyong Liang.

A073 Nrf2 Is a Critical Factor for Hepatocellular Adenoma in Impaired Autophagy. Keiko Taguchi, Masaaki Komatsu, Masayuki Yamamoto.

A074 Sphingosine Kinase 1 deletion suppresses breast tumorigenesis in MMTV-neu transgenic mouse model. Yoshiko Shimizu, Hideki Furuya, Paulette M. Tamashiro, Steve Goodison, Owen Chan, Ian Pagano, Kayoko Iino, Rafael Peres, Kanani Hokutan, Lenora W. M. Loo, Brenda Y. Hernandez, Aung Naing, Charles Joel Rosser, Toshihiko Kawamori.

A075 Discovery and analyses of 14-3-3 protein-protein interaction inhibitors identified by high throughput screening. Nobumoto Watanabe, Hiroyuki Osada.

A076 Establishing an interactive database for SCRUM-Japan, a nation-wide genome screening program stratifying lung and gastrointestinal cancer patients. Katsuya Tsuchihara, Takayuki Yoshino, Koichi Goto, Atsushi Ohtsu, Tomomitsu Hotta.

A077 Synthetic lethal interactions identified in KR12-treated KRAS oncogene dependent colon cancer cells. Atsushi Takatori, Kiriko Hiraoka, Sakthisri Krishnamurthy, Hiroyuki Yoda, Takayoshi Watanabe, Nobuko Koshikawa, Hiroki Nagase.

A078 Gene expression profile and proliferation of pancreatic cancer treated with berberine analogs is modulated by SMAD4 signaling. Shawn Llopis, Florastina Payton-Stewart, Kabrina Miller, Syreeta Tilghman, Christopher Williams.

A079 Development of novel therapeutic splice-switching oligonucleotides targeting oncogenic RNA isoforms driving aggressive prostate cancer. Jennifer Freedman, Timothy Robinson, Bonnie LaCroix, Brendon Patierno, Daniel George, Bruce Sullenger, Steven Patierno.

A080 Mechanistic and Clinical Results of a Novel Cell-System Therapeutic Approach to Cancer. Prithy C Martis, Melissa A Laramore, Atira Dudley, Zoe P Andrada, Angelica Nazarian, Joanne Thomas, Eugene Akahoho, Anna Arreglado, Nathaniel Berman, Allyson J Ocean, Thomas J Fahey, David J Wolf, Barry H Smith, Lawrence S Gazda.

A081 Cytokeratin 19 binds to HER2 and activates HER2 and its downstream signaling. Tomoaki Ohtsuka, Masakiyo Sakaguchi, Shuta Tomida, Hiromasa Yamamoto, Katsuyoshi Takata, Shinsuke Hashida, Mototsugu Watanabe, Ken Suzawa, Yuho Maki, Junichi Soh, Kazunori Tsukuda, Shinichiro Miyoshi, Shinichi Toyooka.

A082 Efficient and rapid cellular delivery of bioactive proteins using EXPLOR: exosomes engineered for protein loading via optically reversible protein-protein interaction. Nambin Yim, Seung-Wook Ryu, Kyungsun Choi, Kwang Ryeol Lee, Seunghee Lee, Hojun Choi, Ji-Ho Park, Jeongjin Kim, Daesoo Kim, Won Do Heo, Chulhee Choi.

A084 Identification of small molecules inhibiting oncogenic transcriptional co-activator, YAP/TAZ. Yusuke Oku, Naoyuki Nishiya, Yoshimasa Uehara.

A085 Significant growth suppressive effects of TOPK and MELK inhibitors in kidney cancer. Taigo Kato, Hiroyuki Inoue, Seiya Imoto, Yoshinori Tamada, Takashi Miyamoto, Yo Matsuo, Yusuke Nakamura, Jae-Hyun Park.

A086 Tumor-suppressor NDRG2 works as a stress responder regulating major signaling pathways by recruitment of PP2A to PTEN, NIK or others in leukemia/cancers. Kazuhiro Morishita, Shingo Nakahata, Tomonaga Ichikawa.

Tumor microenvironment

A087 The essential roles of ARF in MMP7 levels and microenvironments during prostate cancer evolution. Yingqiu Xie, Adilgazy Semeigazin, Wenfu Lu, Diyora Abdukhakimova, Qing Yang, Zhenbang Chen.

A088 Stromal fibroblasts mediate extracellular matrix remodeling and invasion of scirrhous gastric carcinoma cells. Hideki Yamaguchi, Kazuyashi Yanagihara, Masakazu Yashiro, Ryuichi Sakai.

A089 A novel injectable bioluminescence resonance energy transfer-based in vivo imaging probe for HIF-active cancer cells. Shinae Kizaka-Kondoh, Takahiro Kuchimaru, Tomoya Suka, Tetsuya Kadonosono.

A090 Stromal cells negatively modulate the growth of cancer cells by the secretion of GAPDH. Manabu Kawada.

A091 Dual targeting bone morphogenetic protein-9 and vascular endothelial growth factor A impairs tumor growth via inhibition of angiogenesis. Tetsuro Watabe, Yuichi Akatsu, Yasuhiro Yoshimatsu, Kohei Miyazono.

A092 Impact of metformin on REDOX and inflammatory signaling in breast cancer. Chandler D Schexnayder, Demetrius O Onuaguluchi, Shawn D Llopis, Christopher C Williams.

A093 Canonical Hedgehog signaling synergizes with Helicobacter infection to induce MDSCs and gastric metaplasia. Lin Ding, Qian Li, Juanita L Merchant.

A094 Kampo medicine, Shosaikoto may modulate the function of macrophages recruited by IL-1 β and may suppress the tumor progression in transgenic mice. Takafumi Nakamura.

A095 C-EBP-beta-mediated cytokine up-regulation promotes tumor growth in miR-155 KO breast cancer model via increased MDSC infiltration. Sinae Kim, Suhwan Chang.

A096 Angiotensin inhibition controls ascites, enhances drug delivery and potentiates chemotherapy by decompressing lymphatic and tumor blood vessels. Yanxia Zhao, Dennis Jones, Jinghong Cao, Hao Liu, ShanMin Chin, Peigen Huang, Xing Gao, Lei Xu.

A097 Breaking the tension: investigating a link between tissue mechanics and tumor immunity in breast cancer. Ori Maller, Luke Cassereau, Brian Ruffel, Jason Northey, Irene Acerbi, Ryan Hill, Miranda Broz, Jenny Munson, Melody Swartz, Kirk Hansen, Matthew Krummel, Lisa Coussens, Valerie Weaver.

A098 Control of metastatic niche formation by targeting APBA3/Mint3 in inflammatory monocytes. Toshiro Hara, Hiroki J Nakaoka, Yoshinori Murakami, Motoharu Seiki, Takeharu Sakamoto.

A099 Bone marrow stromal cells from young healthy donors secrete exosomes that inhibit in vivo angiogenesis in multiple myeloma. Tomohiro Umezu, Satoshi Imanishi, Kenko Azuma, Chiaki Kobayashi, Kazuma Ohyashiki, Junko H Ohyashiki.

A100 Inhibiting CCAAT/enhancer binding protein delta in tumor stroma prevents the progression of cancers and drug-resistant cancers. Ju-Ming Wang.

A101 Tumor endothelial cells promote metastasis via biglycan secretion. Nako Maishi, Yusuke Ohba, Kosuke Akiyama, Noritaka Ohga, Jun-ichi Hamada, Mohammad Towfik Alam, Masanobu Shindoh, Yasuhiro Hida, Kyoko Hida.

A102 Extracellular Vesicle-Mediated Reversal of Castrate Resistant Prostate Cancer. Devasis Chatterjee, Michael DeTatto, Joseph F. Renzulli, Peter J. Quesenberry.

A103 Cancer microparticles induces Tissue Factor-related procoagulant activity in endothelial cells in vitro.. Mufuliat Adeola Adesanya, Leigh A Madden, Anthony Maraveyas.

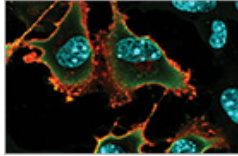
A104 Papyracillic acid and penicillic acid show preferential cytotoxicity to human pancreatic cancer cells under nutrient-deprived conditions.. Isao Momose, Yohko Yamazaki, Hayamitsu Adachi, Kengo Sumiyoshi, Manabu Kawada, Shibasaki Masakatsu.

A105 Interactions between tumor-associated macrophages and chemoresistant ovarian cancer cells. Ji-Hye Ahn, Jeong-Hwa Woo, Jung-Hye Choi.

A106 The Cancer Promoting Mechanism Driven by Intra-tumor Heterogeneity. Yoshimi Arima, Takashi Semba, Akiyoshi Kasuga, Ritsuko Harigai, Hideyuki Saya.

Cancer immunotherapy

A107 “The inhibitory receptor ILT3 as a new diagnostic marker in acute myeloid leukemia. Hanna Dobrowolska, George Vlad.



Poster Session B

Thursday, February 18, 2016

5:30 p.m.-7:30 p.m.

Regency Ballroom

Cancer metabolism

B001 Targeting tumor cell metabolism by inhibiting the mevalonate pathway: Two hits are better than one. Peter Mullen, Joseph Longo, Diana Resetca, Alexandra Pandyra, Brian Raught, Linda Z Penn.

B002 Metabolic reprogramming-associated microRNA is a new target to repress peritoneal dissemination of scirrhous gastric cancers: A new approach for anti-metastatic therapy. Yoshifumi Takei.

B003 Antimetastatic effects of 2-deoxyglucose in osteosarcoma: Transcriptomic investigation of affected pathways. Douglas H Thamm, Andrey Ptitsyn, Joseph L Sottnik.

B004 Recurrent patterns of DNA copy number alterations in tumors reflect metabolic selection pressures. Nicholas A Graham, Aspram Minasyan, Heather R Christofk, Ingo K Mellingshoff, Thomas G Graeber.

B005 IER5 generates a novel hypo-phosphorylated active form of HSF1 and contributes to tumorigenesis. Rieko Ohki, Yoshinori Asano.

B006 Pyrvinium selectively targets blast phase-chronic myeloid leukemia through inhibition of mitochondrial respiration. Wei Xiang, Jit Kong Cheong, Shi Hui Ang, Bryan Teo, Peng Xu, Kartini Asari, Wentian Sun, Hein Than, Ralph Bunte, David Virshup, Charles Chuah.

B007 Metabolic characteristics of stem cells during glioma formation. Oltea Sampetean, Shunsuke Shibao, Noriaki Minami, Hideyuki Saya.

B008 Estrogen-responsive COX7RP that stabilizes mitochondrial respiratory supercomplex assembly regulates tumor growth and metabolism in breast cancer. Satoshi Inoue, Kazuhiro Ikeda.

B009 Novel Thymidine Catabolism for ROS Generation and Survival in Human Cancer Cells. Sho Tabata, Masatatsu Yamamoto, Hisatsugu Goto, Yasuhiko Nishioka, Masaru Tomita, Tomoyoshi Soga, Tatsuhiko Furukawa, Shin-ichi Akiyama.

B010 The Effect of G6PD Inhibition on the Chemosensitiveness of Pancreatic Cancer Cells In Vitro. Chioma Udemgba, Kenkyo Matsuura, Christopher Freel, Sally Kornbluth.

B011 Glycosaminoglycan as an energy source for pancreatic cancer cells. Shotaro Kishimoto, Yoji Andrew Minamishima, Noriyo Hayakawa, Makoto Suematsu.

B012 Fumarate accumulation disrupts iron signaling in hereditary leiomyomatosis and renal cell cancer. Michael J Kerins, Aikseng Ooi.

B013 The Development of Novel Therapy Targeting Metabolic Pathway Dysregulation in Doxorubicin-resistant Bone and Soft Tissue Sarcomas. Youngji Kim, Eisuke Kobayashi, Daisuke Kubota, Yoshikazu Tanzawa, Yoshiyuki Suehara, Ayumu Itou, Kazuo Kaneko, Hirokazu Chuman, Akira Kawai, Shigehisa Kitano.

B014 Extreme vulnerability of IDH1 mutant cancers to NAD⁺ depletion. Kensuke Tateishi, Hiroaki Wakimoto, John A Iafrate, Shota Tanaka, Franziska Loebel, Nina Lelic, Dmitri Wiederschain, Olivier Bedel, Bailin Zhang, Robert E Gerszten, Yiyun Zhang, Jing-Ruey J Yeh, William T Curry, Dan Zhao, Sudhandra Sundaram, Fares Nigim, Mara V.A Koerner, Quan Ho, David E Fisher, Elisabeth M Roider, Lajos V Kemeny, Keith T Flaherty, Tracy T Batchelor, Andrew S Chi, Daniel P Cahill.

B015 Collateral lethality target identification through unbiased chemical biology. Yu-Hsi Lin, Nikunj Satani, Naima Hammoudi, Joe Marszalek, Yuting Sun, Marina Protopopova, Maria E Di Francesco, Barbara Czako, Alan Wang, Ronald A DePinho, Florian L Muller.

B016 NAD biosynthesis as a collateral lethality target in cancer. Florian L Muller, Yu-Hsi Lin, Pingna Deng, Nikunj Satani, Naima Hammoudi, Marina Protopopova, Gayatry Mohapatra, John M Asara, Simona Colla, Chia Chin Wu, Joe Marszalek, Alan Wang, Ronald A DePinho.

B017 Large-scale targeted proteomics unveils a global landscape of cancer metabolism. Keiichi Nakayama.

B018 MiR-145 modulates Warburg effect by targeting KLF4/PTB1/PKMs axis in bladder cancer cells. Koichiro Minami, Kohei Taniguchi, Nobuhiko Sugito, Minami Kumazaki, Kiyoshi Takahara, Teruo Inamoto, Satoshi Kiyama, Haruhito Azuma, Yukihiro Akao.

B019 The perturbation of Warburg effect increased the sensitivity of TRAIL-induced cell death. Minami Kumazaki, Koichiro Minami, Yukihiro Akao.

B020 Hexokinase 2 in colorectal cancer as a potent prognostic factor associated with glycolysis, proliferation and migration. Munetoshi Katagiri, Hideaki Karasawa, Kiyoshi Takagi, Shun Nakayama, Shimpei Maeda, Shinichi Yabuuchi, Fuyuhiko Motoi, Takeshi Naitoh, Takashi Suzuki, Michiaki Unno.

B021 Thyroid hormone-activated DAPK2 suppresses hepatocarcinogenesis through autophagy. Hsiang-Cheng Chi, Kwang-Huei Lin.

Non-coding RNAs

B022 The retinoblastoma tumor suppressor (pRb) regulates expression of the maternally expressed gene 3 (MEG3) lncRNA. Traci Kruer, Susan Dougherty, Brian Clem.

B023 G-quadruplex in the telomeric non-coding RNA causes genome-wide alteration of gene expression in cancer. Kyotaro Hirashima, Hiroyuki Seimiya.

B024 The therapeutic strategy for pancreas cancer using Nek2 siRNA. Toshio Kokuryo, Yukihiro Yokoyama, Junpei Yamaguchi, Masato Nagino.

B025 The CRKL oncogene is downregulated by p53 through miR-200s. Miyuki Tamura, Yasushi Sasaki, Masashi Idogawa, Takashi Tokino.

B026 Low-grade neuroendocrine tumors of the gastrointestinal tract show similar microRNA expression signature, which is distinct from gastrointestinal neuroendocrine carcinomas. Toyoki Yoshimoto, Hiroko Nagano, Noriko Yamamoto, Noriko Motoi, Masaru Ushijima, Masaaki Matsuura, Toshiharu Yamaguchi, Yuichi Ishikawa.

B027 MicroRNA-16 mediates the regulation of a senescence-apoptosis switch in malignant lymphomas. Akihiro Kitadate, Sho Ikeda, Kazuaki Teshima, Mitsugu Ito, Naoto Takahashi, Miyagaki Tomomitsu, Makoto Sugaya, Hiroyuki Tagawa.

B028 Post-transcriptional regulation of c-MYC by microRNAs in cisplatin-resistant ovarian cancer. Jeyshka M. Reyes-González, Pablo E. Vivas-Mejía.

B029 Large-scale gene expression profiling identifies targets of microRNA-206 that drive tumor progression and metastasis in lung adenocarcinoma. Kathleen D. Watt, Peter F. Truesdell, Neil Renwick, Andrew W. Craig.

B030 Targeting a MAPK-miR-124-Sox9 axis radiosensitizes human glioblastoma cells. Hanna Sabelstrom, Rahul Jandial, Ksenya Shchors, Selma Masic, Trenten Fenster, Edith Yuan, Supna Saxena, Allen Ho, Theodore P Nicolaidis, Robyn Wong, Stanislava Yakovenko, Mitchel S Berger, Evan Y Snyder, Johan Jakobsson, William A Weiss, Anders I Persson.

B031 microRNA-137/DCLK1 axis regulates colon cancer stem cells. Masazumi Sakaguchi, Shigeo Hisamori, Nobu Oshima, Yoshiharu Sakai.

B032 Identification of microRNAs dysregulated in gemcitabine and cisplatin resistant bladder cancer cells.. Tetsuya Shindo, Reo Maruyama, Naotaka Nishiyama, Hiroshi Kitamura, Hiromu Suzuki, Naoya Masumori.

B033 Exosomal microRNA-185 from human saliva as a biomarker in predicting cancer development in oral leukoplakia. Xiaobing Guan, Jingping Bai, Li Chen.

B034 Targeting MicroRNA-143 in Glioblastoma reduces in vitro tumor growth. Eunice Lozada-Delgado, Pablo E Vivas.

B035 Identification of upstream regulators of microRNA-138 in malignant gliomas. Federica Di Pascale, Srikanth Nama, Manish Muhuri, Nicholas Ang Da Zhi , Prabha Sampath.

B036 Clinical significance of miR-146a polymorphisms in colorectal cancer. Sho Nambara, Tomohiro Iguchi, Hisateru Komatsu, Takaaki Masuda, Hu Q, Kuniaki Sato, Yushi Ogawa, Shinya Kidogami, Tomoko Saito, Masami Ueda, Hidenari Hirata, Shotaro Sakimura, Ryutaro Uchi, Naoki Hayashi, Shuhei Ito, Hidetoshi Eguchi, Koshi Mimori.

B037 Discovery of a long intergenic non-coding RNA regarding its clinical and biological relevance to breast cancer. Yi Shen, Zhanwei Wang, Lenora Loo, Wen-Ming Chu, Dionyssios Katsaros, Herbert Yu.

B038 A new machinery of microRNA turnover in differentially regulating the expression of microRNA genes cluster leading to epithelial-to-mesenchymal transition. U-ging Lo, Rey-Chen Pong, Diane Yang, Jiancheng Zhou, Jer-Tsong Hsieh.

B039 Down-regulation of plasma miR-215 in chronic myeloid leukemia patients with successful imatinib discontinuation. Kazuma Ohyashiki, Tomohiro Umezu, Seiichiro Katagiri, Chiaki Kobayashi, Kenko Azuma, Tetsuzo Tauchi, Yutaka Fukuoka, Junko H Ohyashiki.

B040 Senescence-associated EVs from fibroblasts act as tumor suppressor at the tumor microenvironment. Megumi Okada, Satoshi Muraoka, Naoki Sako, shigeyuki Teranishi, Masaki Kinehara, Akira Shimamoto, HIDETOSHI TAHARA.

Prevention and epidemiology

B041 Gastric-and-intestinal mixed intestinal metaplasia as an irreversible point with eradication of *Helicobacter pylori* in the human stomach. Yuka Kiriya, Tetsuya Tsukamoto.

B042 The role of alcohol on Notch signaling pathway. Zheng Sun, Yao Liu, Xiaoxin Chen, Xinyan Zhang.

B043 Establishment of desmoid-like cell lines by an intestinal tumor-derived xenograft model. Shingo Miyamoto, Wakana Onuma, Gen Fujii, Michihiro Mutoh.

B044 Physical activity impacts bone turnover markers in overweight/obese postmenopausal breast cancer survivors enrolled in a weight loss trial. Lin Yang, Jingxia Liu, Michael Naughton, Patricia A Ganz, Sonya Izadi, Anna L Schwartz, Graham A Colditz, Kathleen Y Wolin, Adetunji T Toriola.

B045 Foundation of Japanese Familial Pancreatic Cancer Registry. Kyoichi Takaori, Cigusa Morizane, Shinichi Yachida, Takahisa Kawaguchi, Keita Wada, Masako Torishima, Risa Usui, Masami Suzuki, Hiroko Hosoi, Masaki Mizumoto, Masaki Mizumoto, Masaki Mizumoto, Hiromi Murakami, Shinji Kosugi, Fumihiko Matsuda, Shinji Uemoto, Tooru Shimosegawa .

B046 Current management and outcome of soft tissue sarcoma among the oldest-old in Japan. Masanori Okamoto, Yasuo Yoshimura, Kaoru Aoki, Munehisa Kito, Atsushi Tanaka, Shuichiro Suzuki, Akira Takazawa, Hiroyuki Kato.

B047 Ink4a/Arf-dependent parietal cell loss promotes the initiation of CD44 variant positive stem-like cells in gastric tumorigenesis. Ryo Seishima, Kenji Tsuchihashi, Shogo Okazaki, Toshiro Sato, Yuko Kitagawa, Hideyuki Saya, Osamu Nagano.

B048 Mesothelial injury and carcinogenesis are induced by tremolite, but not anthophyllite. Yasumasa OKAZAKI, Shan-Hwu CHEW, Akihiro SAKAI, Dilnur ARKEN, Yue WANG, Hirotaka NAGAI, Nobuaki MISAWA, Norihiko KOHYAMA, Shinya TOYOKUNI.

B049 Immune homeostasis and obesity-associated factors among atomic-bomb survivors. Kengo Yoshida, Eiji Nakashima, Munechika Misumi, Seishi Kyoizumi, Waka Ohishi, Tomonori Hayashi, Yoichiro Kusunoki.

B050 Statistical prediction of asbestos-related lung cancer among lung cancer patients based on microRNA profiles. Mahmut Yassen, Masaaki Matsuura, Masaru Ushijima, Hiroko Nagano, Gulanbar Obulhasim, Hironori Ninomiya, Noriko Motoi, Kenzo Hiroshima, Takumi Kishimoto, Yukio Takeshima, Yuichi Ishikawa.

B051 Appropriate follow-up period for upper gastrointestinal cancer patients – 5 years or more? (J-CANSIS study). Isao Miyashiro, Yuri Ito, Kayo Nakata, Toshitaka Morishima, Masakazu Hattori, Nariaki Matsuura.

B052 Metformin chemoprevention trial for metachronous colorectal adenoma/polyps in non-diabetic, post-polypectomy subjects: a multi-centre phase 3 randomised controlled trial. Takuma Higurashi, Kunihiro Hosono, Hirokazu Takahashi, Yasuhiko Komiya, Shotaro Umezawa, Eiji Sakai, Takashi Uchiyama, Leo Taniguchi, Yasuo Hata, Shiori Uchiyama, Akiko Hattori, Hajime Nagase, Takaomi Kessoku, Jun Arimoto, Nobuyuki Matsuhashi, Yoshiaki Inayama, Shoji Yamanaka, Masataka Taguri, Atsushi Nakajima.

B053 Relationships between anthropometric and reproductive factors and risks of triple-negative and HER2-overexpressing breast cancers. Christopher I Li, Lu Chen, Mei-Tzu C Tang, Peggy Porter, Linda Cook.

B054 Smoking-related DNA adducts in human lung and gastric tissues using adductome analysis. Nobuya Kurabe, Ippei Ohnishi, Masako Suzuki, Takashi Yamashita, Yusuke Inoue, Tomoaki Kahyo, Yukari Totsuka, Makoto Nagashima, Fumihiko Tanioka, Shioto Suzuki, Masako Kasami, Kazuhito Funai, Hitoshi Nakagama, Haruhiko Sugimura.

Therapies based on signal transduction

B056 GALNT6 is a novel molecular target in treatment of pancreatic cancer. Yunus Emre Tarhan, Kato Taigo, Miran Jang, Yusuke Nakamura, Jae-Hyun Park.

B057 PRMT1 enhances formation of chromosomal passenger complex (CPC) through arginine methylation of INCENP in human cancer cells. Xiaolan Deng, Yusuke Nakamura, Ryuji Hamamoto.

B058 HMDB and 5-AzadC combination reverses tumor suppressor CCAAT/enhancer binding protein delta to strengthen the death of liver cancer cells. Hsin-Hwa Tsai, Chien-Feng Li, Ju-Ming Wang.

B059 Autocrine BMP-4 is a novel therapeutic target for colorectal cancer. Yuichiro Yokoyama, Shogo Ehata, Yasuyuki Morishita, Toshiaki Watanabe, Kohei Miyazono.

B060 Discovery of Tumor Suppressive Function and Therapeutics by a Novel Reporter System for Nucleolar Stress Response. Takuto Kawahata, Kohichi Kawahara, Fumito Horikuchi, Yohei Kamijyo, Takehiro Shiraishi, Masatatsu Yamamoto, Yoshinari Shinsato, Kentaro Minami, Kazunari Arima, Toshiyuki Hamada, Tatsuhiko Furukawa.

- B061 Selection of patients with poor prognosis colon cancer for PDGFR/cKIT-targeted therapy.** I. Ubink, S. G. Elias, I. H. M. Borel Rinkes, O. Kranenburg.
- B062 Stimulation-dependent internalization of RANK is crucial for differentiation of osteoclast involved in bone metastasis.** Yuu Taguchi, Jun-ichiro Inoue.
- B063 The anti-cancer effect of the novel a-bisabolol derivatives for pancreatic cancer.** Murata Yoshihiko, Kokuryo Toshio, Yokoyama Yukihiro, Yamaguchi Junpei, Nagino Masato.
- B064 Inhibition of RAF1 kinase activity restores apico-basal polarity and impairs tumor growth in human colorectal cancer.** Tijana Borovski, Thomas T. Vellinga, Jamila Laoukili, Susanne van Schelven, Andre Verheem, Dieuwke L. Marvin, Inge Ubink, Inne H.M. Borel Rinkes, Onno Kranenburg.
- B065 Inhibition of IGF-1-mediated cellular migration and invasion by migracin A in ovarian clear cell carcinoma cells.** Tamami Ukaji, Kazuo Umezawa.
- B066 In vivo antitumor activity of M-COPA, a novel Golgi disruptor, and proof of concept study of Golgi dysfunction.** Mutsumi Okamura, Akinobu Akatsuka, Yoshimi Ohashi, Asaka Hirosawa, Isamu Shiina, Kentaro Yoshimatsu, Takao Yamori*, Shingo Dan.
- B067 In silico evaluation of PI3K- and MAPK pathway inhibitors and their correlation with pathway activation status across a panel of JFCR39 human cancer cell lines.** Kanami Yamazaki, Yumiko Nishimura, Takao Yamori*, Shingo Dan.
- B068 Functional detection of phospho-circuits identifies the kinome vulnerabilities of BRAFV600E colorectal cancer.** Changjun Wang, Diede Brunen, Bo Pan, Anirudh Prahallad, Ana Ruiz-Saenz, Danislav Spassov, Mark Moasser, René Bernards, Laura van 't Veer, Jean-Philippe Coppé.
- B069 Identification of Sunitinib as a candidate inhibitor of Venetoclax-resistance in activated leukemia cells.** Sina Oppermann, Jarkko Ylanko, Yonghong Shi, santosh Hariharan, Brian Leber, David Spaner, David Andrews.
- B070 Possible anticancer mechanisms of DNA alkylating Pyrrole Imidazole polyamide targeting the mutated KRAS gene in colorectal cancer.** Kiriko Hiraoka, Jason Lin, Atsushi Takatori, Takahiro Inoue, Hiroyuki Yoda, Sakthi Krishnamurthy, Takayoshi Watanabe, Nobuko Koshikawa, Toshinori Ozaki, Hiroki Nagase.
- B071 A splicing reporter-based method for screening of RNA splicing switch identifies the novel therapeutic targets for tumor-worsening proteins.** So Masaki, Chizuru Tsuzuki, Asuka Hata, Naoyuki Kataoka.
- B073 Proteasome inhibitors suppress oncogenic FOXM1 via HSP70 induction.** Marianna Halasi, Renata Váraljai, Elizaveta Benevolenskaya, Andrei L Gartel.
- B074 Coordinated inhibition of ribosome synthesis and function provides a novel and potent therapeutic approach to treat MYC driven malignancy.** Jennifer R Devlin, Richard J Rebello, Katherine M Hannan, Carleen Cullinane, Denis Drygin, Luc Furic, Ross D Hannan, Richard B Pearson.

B075 Novel short peptide eliminates AR signaling in enzalutamide-resistant prostate cancer cells. Chenchen He, Ruibao Chen, Benyi Li.

B076 Targeting the JNK-JUN pathway to treat multi-Receptor Tyrosine Kinase mediated BRAF-inhibitor resistance in melanoma. Rachel Ramsdale, Frederic Z Li, Robert N Jorissen, Helen Rizos, Amardeep Dhillon, Richard B Pearson, Grant A McArthur, Petranel T Ferrao.

B077 The proof of concept of REIC/Dkk-3 gene therapy for thoracic malignancies. Shinichi Toyooka, Ken Suzawa, Kazuhiko Shien, Masakiyo Sakaguchi, Masami Watanabe, Peng Huang, Kei Namba, Hidejiro Torigoe, Hiroki Sato, Junichi Soh, Hiromasa Yamamoto, Yuho Maki, Kazunori Tsukuda, Shuta Tomida, Yasutomo Nasu, Hiromi Kumon, Shinichiro Miyoshi.

Tumor microenvironment

B078 Myoglobin polymersomes as a potential agent for tumor vascular disruption. Anne B Rohlfing, Christina L Hofmann, Jivan Yewle, P. Peter Ghoroghchian, Gregory M Palmer, Mark W Dewhirst.

B079 CD109-deficiency suppresses chemically induced H-ras mutation and tumorigenesis in mouse skin. Masaki Sunagawa, Shinji Mii, Masato Nagino, Masahide Takahashi.

B080 The role of p16^{Ink4a} and p21^{Cip1/Waf1} in myeloid-derived suppressor cells. Atsushi Okuma, Eiji Hara.

B081 The CEBPD/HIF1- α /HDGF axis mediates activation of pancreatic stellate cells and benefits the progress of pancreatic cancer. Hong-Yue Lai, Tso-Wen Wang, Ju-Ming Wang.

B082 Targeting Interleukin-33-CXCR4 Signaling Axis Attenuates the Aggressiveness and Improves Prognosis of Head and Neck Squamous Cell Carcinoma. Shin Nieh.

B083 Infiltrating macrophages may promote early esophageal carcinogenesis via p38 MAP kinase and IL-6 signaling. Yu-ichiro Koma, Nobuhisa Takase, Noriaki Arai, Himiko Kodaira, Masayoshi Hosono, Yumi Ichihara, Mari Nishio, Manabu Shigeoka, Hiroshi Yokozaki.

B084 GRIN2A mutations may modulate effects of extracellular glutamate on melanoma cell growth. Stacey Ann N D'mello, Euphemia Leung, Wayne R Joseph, Taryn N Green, Graeme J Finlay, Bruce C Baguley, Maggie L Kalev-Zylinska.

B085 Resolution of Cell Debris-Stimulated Hematological Cancer Progression. Kef Kawin Prasit, Molly M Gilligan, Anna Eversman, Kristen Lehner, Yael Gus-Brautbar, Mark W Kieran, Huang Sui, Charles N Serhan, Dipak Panigrahy.

B086 Selective cancer cell killing by spautin-1, a USP10/USP13 inhibitor, under glucose starvation. Kazuhiro Kunimasa, Masaru Koido, Chika Ikeda, Satomi Tsukahara, Junko Sakurai, Shingo Dan, Takao Yamori*, Akihiro Tomida.

B087 Mistletoe reduce melanoma growth through promotion of apoptosis and phagocytosis. Bilquis F Ara, Reena Ghildyal, Luby Simson, Gero Leneweit, Christoph Heyder.

B088 Tumor Infiltrating Lymphocytes evaluation in Ductal carcinoma in situ. Makiko Kamio, Mimoto Rei, Imawari Yoshimi, Kato Kumiko, Nogi Hiroko, Takeyama Hiroshi.

B089 Automated 5-plex fluorescent immunohistochemistry enables simultaneous assessment of the immune-environment on tumor tissue microarray. Antony Hubbard, Adriana Racolta, Srabani Bhaumik, Nick Cummins, Tobin Jones, Karl Garsha, Frank Ventura, Wenjun Zhang, Lei Tang.

B090 An impact of cancer cell-derived IL-34 on the induction of chemoresistance. Ken-ichiro Seino.

B091 Gut microbiome in tumorigenesis of colorectal cancer in obesity. Mutsuhito Matsuda, Masashi Tsuruta, Shimpei Matsui, Hiroto Hasegawa, Koji Okabayashi, Kohei Shigeta, Takayuki Kondo, Takehiro Shimada, Masashi Yahagi, Yusuke Yoshikawa, Yuko Kitagawa.

B092 Identification of tumor endothelium-related genes in colorectal cancer. Akira Yorozu, Yamamoto Eiichiro, Reo Maruyama, Masahiro Kai, Takeshi Niinuma, Tomohisa Furuhashi, Tomohiko Nishidate, Tamotsu Sugai, Hiromu Suzuki.

B093 Tumor endothelial cell-derived prostaglandin D₂ inhibits vascular hyper-permeability and angiogenesis. Keisuke Omori, Takahisa Murata.

B094 Normalizing tumor oxygen microenvironment using OMX protein oxygen carrier, developed for enhancing cancer responsiveness to treatment. Ana Krtolica, Natacha Le Moan, Philberta Leung, Henry VanBrocklin, Youngho Seo, Jonathan A Winger, Stephen PL Cary.

B095 Annexin A5 plays an important role in auranofin-mediated COX-2 downregulation. Nahee Park, Hyoung Seok Baek, Sangyun Shin, Young-Jin Chun.

B096 T cell receptor repertoire predicts clinical response of neoadjuvant chemotherapy in breast cancer. Jae-Hyun Park, Miran Jang, Yunus Emre Tarhan, Toyomasa Katagiri, Mitsunori Sasa, Yasuo Miyoshi, Matthew P Goetz, Yusuke Nakamura.

B097 Cancer Stromal Targeting Therapy (CAST) Using Anti-Insoluble Fibrin Antibody-Drug Conjugate. Yasuhiro Matsumura.

B098 DDR2-collagen axis promote peritoneal dissemination in gastric cancer. Junji Kurashige, Masaaki Iwatsuki, Daisuke Kuroda, Yuki Kiyozumi, Keisuke Kosumi, Daisuke Izumi, Kazuto Harada, Ryuma Tokunaga, Hironobu Shigaki, Yoshio Sakamoto, Yoshifumi Baba, Naoya Yoshida, Koshi Mimori, Hideo Baba.

B099 Upregulation of S100A10 is associated with poor prognosis in lung cancer. Masaki Makita, Yuriko Saiki, Kazumori Arai, Akira Sakurada, Yoshinori Okada, Akira Horii.

Other

B100 Synthetic lethal screening for the compound with β -catenin mutation from natural product library. Masaya Imoto.

- B101 Development of Lasso clustering method with application to basal-like breast cancer microarray data.** Masaru Ushijima, Masaaki Matsuura.
- B102 Evaluation of a specific fluorescence-quenched peptide substrate for membrane-type 1 matrix metalloproteinase.** Toshifumi Akizawa, Masanari Taniguchi, Aya Kojima, Motomi Konishi.
- B103 Inhibition of connective tissue growth factor (CTGF) as treatment for glioblastoma.** Manuel Roehrich, Kenneth Lipson, Peter Huber.
- B104 MUC1 alters EGFR trafficking in breast cancer.** Sabrina Maisel, Joyce Schroeder.
- B105 Significantly higher pathological complete remission rate after neo-adjuvant chemotherapy in HER2 positive breast cancer patients with high expression of Ki67.** Tomoko Takamaru, Sadako Akashi-Tanaka, Seigo Nakamura.
- B106 Sequencing cell-free DNA from plasma enables detection of tumor-specific CNVs in patients with solid tumors.** Taylor J Jensen, Yijin Wu, Amin R Mazloom, Youting Sun, Christopher K Ellison, Bright Sagoe, Prachi Nakashe, Nicole Lambert, Helen Tao, Erin McCarthy, Long Pham, Mostafa Abdellatef, Micah Manary, Christian Laing, Divya Sain, Vach Angkachatchai, Penn Whitley, Sung K Kim, Timothy Burcham, Daniel Grosu, Dirk van den Boom, Mathias Ehrich.
- B107 Association between CYP2D6 genotype and response to tamoxifen in a prospective multicenter study in Japan..** Hitoshi Zembutsu, Seigo Nakamura, Sadako Akashi-Tanaka, Takashi Kuwayama, Chie Watanabe, Hiroyuki Takei, Takashi Ishikawa, Yoshie Hasegawa, Ayami Matsukata, Goro Kutomi, Hiroshi Matsumoto, Tomoko Takamaru, Kana Miyahara, Hiroaki Shima, Fukino Satomi, Hideki Maeda, Mionoru Okazaki, Hisamitsu Zaha, Mai Onomura, Yasuaki Sagara, Shinichi Baba, Akimitsu Yamada, Kazuhiro Shimada, Daisuke Shimizu, Koichiro Tsugawa, Arata Shimo, Yu Ern Tan , Mikael Hartman, Wan Ching Chan, Soo Chin Lee, Yusuke Nakamura.
- B108 A monoclonal antibody 2G12/E7 predicts poor prognosis of pancreatic ductal adenocarcinoma.** Makoto Sano, Taku Homma, Emiko Hayashi, John Ngo, Julie Plaisancie, Tsutomu Yamada, Nao Yoshida, Shintaro Yamazaki, Tadatoshi Takayama, Masahiko Sugitani, Shinobu Masuda, Norimichi Nemoto.
- B109 Mathematical analysis of telomere length attrition in hematopoietic tissue.** Hiroshi Haeno, Haruki Honda.
- B110 Interferon Consensus Sequence-Binding Protein (ICSBP) regulates the transforming growth factor-beta type I receptor expression in osteosarcoma cells.** Jee Young Sung, kyung- Sil Yoon, Yong-Nyun Kim, Byung-Kiu Park.
- B111 The apoptotic effect of simvastatin via the up-regulation of BIM in non-small cell lung cancer cells.** In Kyung Kim, Hwa Young Lee, Hye In Lee, Jin Young Mo, Jin Woo Kim, Sang Haak Lee.
- B112 CRISPR/Cas9 Genome-Wide gRNA Library for Target Identification.** Karim Hyder, Donato Tedesco, Mikhail Makhanov, Sylvain Baron, Dmitry Suchkov, Costa Frangou, Alex Chenchik.

B113 Mechanistic Study involving the combined antiproliferative effect of “Etoricoxib” Cyclooxygenase-2 inhibitor and Cholecystokinin -2 Receptor antagonist in Human Pancreatic Cancer Cells. Manisha Sikka.

B114 Autophagy supports cell survival for squamous cell carcinoma cells in endonuclease G-mediated apoptosis. Masakazu Hamada, Atsushi Masui, Soichi Iwai, Yoshiaki Yura.

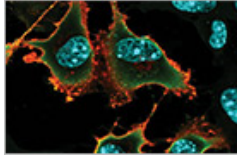
B115 HS-173, a novel PI3K inhibitor inhibits epithelial mesenchymal transition in pancreatic cancer. Marufa Rumman, Kyung Hee Jung, Joo Han Lim, Ju Young Kim, ZhengHuan Fang, Honghua Yan, Jung Hee Park, Soon-Sun Hong.

Cancer genomes

B116 A Large BAP1 Cancer Syndrome Kindred tracing 9-Generations back to 1700s uncovered by Combined Genetic and Genealogic Studies. Mitsuru Emi, Sandra Pastorino, Masaki Nasu, Haining Yang, Michele Carbone.

Non-coding RNAs

B117 Let-7 microRNA regulates proliferation of stem cells, Muse cells, by modulating energy metabolism. Mozhdeh Bagheri, Hideo Akashi, Yasuko Kimura, Shohei Wakao, Kodai Funakoshi, Fumitaka Ogura, Gregorio Chazenbalk, Mari Dezawa.



Poster Session C

Friday, February 19, 2016

5:30 p.m.-7:30 p.m.

Regency Ballroom

Cancer immunotherapy

C001 EMP2 expression identifies cancer stem cells and represents a novel therapeutic target in breast cancer. Christen Dillard, Puneet Dhawan, Arjun Lakhanpal, Madhuri Wadehra.

C002 The combination of carbon ion radiation and TLR7/8 agonists induces local and abscopal immune responses in gastrointestinal tumors in vivo. Yingying Liang, Sonevisay Sisombath, Nils Nicolay, Ramon Lopez, Peter E Huber.

C003 Blockade of protein kinase A (PKA) localization augments the trafficking and anti-tumor efficacy of adoptively transferred chimeric antigen receptor-expressing T cells. Kheng Newick, Shaun O'Brien, Jing Sun, Albert Lo, Steven Maceyko, Steven M Albelda.

C004 Intratumoral delivery of GITR agonistic antibody induces an antitumor immunity stronger than systemic delivery. Kenta Narumi, Reina Miyakawa, Ryosuke Ueda, Hisayoshi Hashimoto, Kazunori Aoki.

C005 CXCR7 is an Immunotherapeutic Target in Glioblastoma Multiforme. Nicole Salazar, Jeffrey Carlson, Cecilia Oderup, Yayue Zheng, Julia Gross, Andrew Jang, Thomas M Burke, Susanna Lewen, Kexin Huang, Hua Tu, Brian A Zabel.

C006 Cancer Immunotherapy Biomarker Profiling Assay. Alex Chenchik, Leonid Iakoubov, Mikhail Makhanov, Costa Frangou.

C007 Expression and clinical significance of HHLA2: A potential novel immune checkpoint in lung cancer. Haiying Cheng, Murali Janakiram, Alain Borczuk, Juan Lin, Balazs Halmos, Roman Perez-Soler, Xingxing Zang.

C008 A new approach to the tumor suppression by an anti-erbB-2 trifunctional antibody. Yasuo Kato, Hiromi Hirata, Masayuki Tsujisaki, Toshio Matsune, Yasushi Adachi, Yuji Hinoda, Shigeru Sasaki, Kohzoh Imai.

C009 Identification of peptide-specific T cells in advanced colorectal cancer patients treated with cancer peptide vaccines through deep TCR sequencing. Kazuma Kiyotani, Kenji Tamura, Rui Yamaguchi, Seiya Imoto, Hiroko Takenouchi, Satoru Miyano, Shoichi Hazama, Yusuke Nakamura.

C010 Overcoming resistance of HER2-positive gastric cancer to the targeted therapy using ADC with cleavable linker. Seol Hwa Shin, Choi Jinhyang, Lee Jae Hee, Ju Eun Jin, Song Si Yeol, Jeong Seong-Yun, Choi Eun Kyung.

C011 Oncolytic adenovirus improves anti-tumor efficacy of adoptive T-cell therapy by breaking tumor-induced immunosuppression and peripheral tolerance. Siri Tähtinen, Susanna Grönberg-Vähä-Koskela, Dave Lumen, Maiju Merisalo-Soikkeli, Mikko Siurala, Anu J. Airaksinen, Markus Vähä-Koskela, Akseli Hemminki.

C012 Tumor-associated neutrophils show an antitumor phenotype in syngeneic hematopoietic stem cell transplantation recipients. Ryosuke Ueda, Hisayoshi Hashimoto, Kenta Narumi, Kazunori Aoki.

C013 Preclinical evaluation of At-211-labeled trastuzumab, an alpha-particle radioimmunotherapeutic agent, for the treatment of gastric cancer. Sumitaka Hasegawa, Huizi Keiko Li, Yukie Morokoshi, Kotaro Nagatsu, Takako Furukawa, Tsuneo Saga.

C014 Quantitative Analysis and Clonal Characterization of T-cell Receptor Beta Repertoires in Non-Small-Cell Lung Cancer Patients in a Phase II Clinical Trial of a Novel Three-Peptide Vaccine. Tu H Mai, Atsushi Takano, Hiroyuki Suzuki, Takashi Hirose, Takahiro Mori, Koji Teramoto, Kazuma Kiyotani, Yusuke Nakamura, Yataro Daigo.

C015 In vitro validation of cancer immunotherapy protocols through a high throughput impedance-based platform reveals the importance of kinetic analysis. Fabio Cerignoli, Jenny Zhu, Garret Guenther, Chris Radecke, Biao Xi, Leyna Zhao, Yama Abassi.

C016 Heat killed BCG dose escalation – a potential solution to BCG toxicity. Gopitkumar R Shah, GuangJian Zhang, Fanghong Chen, Yanli Cao, William A See.

C017 Inflammatory conditions of colorectal cancer inflammation are featured by monocytes/macrophages lineage and CD4+ T cells associated with their humoral mediators in blood. Takuya Komura, Yoshio Sakai, Hisashi Takabatake, Masaki Miyazawa, Akihiro Seki, Hatsune Mochida, Masao Honda, Takashi Wada, Shuichi Kaneko.

C018 Ablation or Inhibition of Neuropilin 1 Signaling in Glioma Associated Macrophages Slows Tumor Progression. Jeremy Tetsuo Miyauchi, Danling Chen, Jillian Nissen, Kenneth Shroyer, David Selwood, Stella E Tsirka.

Cancer immunotherapy

C019 A novel anti-PD-L1/IL-15 immunocytokine enhances antitumor immunity. Yan Wu, Zhaojing Zhong, Stella Martomo, Dan Lu, Haifain Zhang, Zhanna Polonskaya, Xenia Luna, Zhikai Zhang, Zhun Wang, Leo Liu, Jeegar Patel, James Tonra, Henry Li, Larry Witte, Sam Waksal, Zhenping Zhu.

Drug resistance

C020 High-throughput chemical screening for sensitization of bladder cancer to gemcitabine and cisplatin chemotherapy. Takashi Kobayashi, Yuki Kita, Yoshiyuki Matsui, Tomomi Kamba, Osamu Ogawa.

C021 SRF/MRTF inhibition suppresses the hedgehog pathway and resistant growth in basal cell carcinoma. Ramon J Whitson, Nicole M Urman, Alex Lee, Amar Mirza, Catherine Y Yao, Gautam Shankar, Ervin Epstein, Jean Y Tang, Anthony E Oro.

C022 RSK1 regulates a ubiquitin-conjugating enzyme E2 R1 that is associated with multidrug resistance in cancer cells. Kazuhiro Katayama, Kohji Noguchi, Yoshikazu Sugimoto.

C023 Enhanced β -catenin pathway as a novel target for patients with resistance to epidermal growth factor receptor tyrosine kinase inhibitors. Asuka Nakata, Ryo Yoshida, Rui Yamaguchi, Teppei Shimamura, Seiya Imoto, Seiji Yano, Satoru Miyano, Noriko Gotoh.

- C024 Targeting the Activation Function2 (AF2) site on the Estrogen Receptor α in hormone resistant breast cancer.** Kriti Singh, Ravi Shashi Nayana Munuganti, Nada Lallous, Eric Le Blanc, Artem Cherkasov, Paul S Rennie.
- C025 Overcoming EGFR therapy resistance in breast cancer.** Luis Daniel Borrero-Garcia, Angel Luis Troche-Torres, Suranganie Dharmawardhane.
- C026 Induction of AXL degradation overcomes acquired gefitinib resistance in non-small cell lung cancer cells.** Song Yi Bae, Ji-Young Hong, Hye-Jung Lee, Hyen Joo Park, Sang Kook Lee.
- C027 HGF-MET autocrine signaling by HGF translocation induced alectinib-resistance in ALK rearranged non-small cell lung cancer cells.** Hideko Isozaki, Eiki Ichihara, Masayuki Yasugi, Etsuko Yokota, Nagio Takigawa, Kadoaki Ohashi, Toshio Kubo, Takashi Ninomiya, Daisuke Minami, Akiko Sato, Katsuyuki Hotta, Takuya Fukazawa, Yoshio Naomoto, Toshiaki Sendo, Mitsune Tanimoto, Katsuyuki Kiura.
- C028 Wnt β -catenin signaling regulates ABCC3 (MRP3) expression in colorectal cancer.** Minoru Kobayashi, Ryo Funayama, Shinobu Ohnuma, Michiaki Unno, Keiko Nakayama.
- C029 Morusin induces TRAIL sensitization by regulating EGFR and DR5 in human glioblastoma cells.** Dain Park, Eun-Ok Kim, Miyong Yun, Seok-Geun Lee.
- C030 MET/HGF signaling pathway is associated with trastuzumab failure in HER2-positive gastric cancer.** Yasuhito Izumiya, Takeshi Kubota, Toshiyuki Kosuga, Konishi Hirotaka, Shuhei Komatsu, Atsushi Shiozaki, Daisuke Ichikawa, Hitoshi Fujiwara, Kazuma Okamoto, Eigo Otsuji.
- C031 HDAC inhibition overcomes crizotinib-resistance by inducing mesenchymal-epithelial reverting transition (MERT) via miR200c up-regulation in EML4-ALK lung cancer cells.** Koji Fukuda, Shigeki Nanjo, Shinji Takeuchi, Tadaaki Yamada, Ryohei Katayama, Kengo Takeuchi, Hiroshi Nishihara, Seiji Yano.
- C032 Molecular mechanisms of spontaneous resistance to 5-fluorouracil in breast cancer-derived brain metastasis.** Atsunobu Sagara, Katsuhide Igarashi, Maky Otsuka, Michiko Narita, Naoko Kuzumaki, Minoru Narita, Yoshinori Kato.
- C033 Elacridar, a third-generation of ABCB1 inhibitor, overcomes the Docetaxel resistance in Non-Small Cell Lung Cancer (NSCLC).** Hidejiro Torigoe, Shinichi Toyooka, Chen Haiyang, Kazunori Tsukuda, Yuhō Maki, Hiromasa Yamamoto, Syuta Tomida, Junichi Soh, Hiroaki Asano, Shinichiro Miyoshi.
- C035 Targeting DNA repair mechanisms in anticancer therapies and drug resistance.** Luis Eduardo Coronel, Chit Fang Cheok.
- C036 Hsp27 knockdown by nucleotide-based therapy enhances 5-FU sensitivity in colon cancer cell, SW480.** Takehiro Shimada, Masashi Tsuruta, Shingo Akimoto, Kaoru Koishikawa, Hirotoshi Hasegawa, Koji Okabayashi, Kohei Shigeta, Takayuki Kondo, Masashi Yahagi, Mutsuhito Matsuda, Yusuke Yoshikawa, Yuko Kitagawa.
- C037 Self-floating breast cancer cell populations express cancer stem cell markers and show resistance to anticancer drugs.** Yoshimasa Uehara, Yusuke Oku, Kayoko Tsuda, Masahiko Shibazaki, Chihaya Maesawa, Naoyuki Nishiya.
- C038 Comprehensive Analysis of secondary-resistant genes for trastuzumab in gastric cancer.** Masaaki Iwatsuki, Junji Kurashige, Kojiro Eto, Yoshifumi Baba, Yasuo Sakamoto, Naoya Yoshida, Hideo Baba.

C039 Functional inactivation of DCK plays an important role for acquisition of gemcitabine resistance. Yuriko Saiki, Tomohiro Nakano, Akiyoshi Hirayama, Tomoyoshi Soga, Makoto Sunamura, Fuyuhiko Motoi, Michiaki Unno, Akira Horii.

Early detection and circulating tumor cells

C040 Gastric cancer liquid biopsy by circulating extracellular vesicles. Naomi Ohnishi, Naomi Saichi, Risa Fujii, Kentaro Murakami, Hisahiro Matsubara, Koji Ueda.

C041 The potential utility of chemokine CXCL1 (GRO α) as a novel diagnostic and prognostic marker for bladder cancer. Yoshiyuki Matsui, Masakazu Nakashima, Atsuro Sawada, Ryoichi Saito, Takashi Kobayashi, Osamu Ogawa.

C042 A multiplex ELISA for the early detection of non-invasive bladder cancer. Hideki Furuya, Yoshiko Shimizu, Peter Bryant-Greenwood, Owen Chan, Yunfeng Dai, Mark Thornquist, Steve Goodison, Charles Joel Rosser.

C043 Peroxiredoxin 1 suppresses apoptosis in the oral precancerous lesions of mouse model. XIAOFEI TANG, Jianfei zhang, Xinying Jing, Zhang Min.

C044 Two RNAs localizing in circulating exosomes as a novel serological marker for pancreatic cancer. Keisuke Taniuchi.

C045 Early diagnosis system for Asbestos-related Mesothelioma. Okio Hino, Masahiro Abe , Misa Imai.

C046 The optimizing method for quantitative detection of plasma EGFR T790M mutation using droplet digital PCR system. Hiroki Sato, Ken Suzawa, Shinsuke Hashida, Kadoaki Ohashi, Shuta Tomida, Yuho Maki, Hiromasa Yamamoto, Mizuki Morita, Junichi Soh, Hiroaki Asano, Kazunori Tsukuda, Katsuyuki Kiura, Shinichiro Miyoshi, Shinichi Toyooka.

C047 PTEN mutation detection with Sanger sequencing and a new PTEN mutation found in a patient with Lhermitte-Duclos disease. Jianhui Wang, Baehring Joachim.

C048 Development of specificity-enhanced PSA screening by rapid glycoform analysis. Yoshimi Haga, Naomi Saichi, Motohide Uemura, Koji Ueda.

C049 Enumerated Three-Dimensional Telomeric Analysis of Prostate Cancer Circulating Tumor Cells as a Tool for Pre-treatment Prediction of Prognostic and Treatment Outcome. H Alsaadi, J Awe, L Wark, S Mai, D Drachenberg, J Saranchuk.

Stemness and metastasis

C050 PHOSPHO2-mediated HIF/NOTCH signals regulate the transition between epithelial and mesenchymal traits of cancer cells during metastasis. Sen-Yung Hsieh, Rayman Peng , Chih-Yung Chiou.

C051 CEACAM1 inhibition and a Wnt target-driven signature mark a tumor-initiating subset of LGR5-positive cells that emerges during development of colon cancer. Daisuke Shiokawa, Hirokazu Ohata, Ai Sato, Shigeki Serine, Mamoru Kato, Tatsuhiro Shibata, Koji Okamoto.

C052 Krüppel-like factor 4 promoted oral squamous cell carcinoma cells invasion by modulating MMP-9. Wenwen Li, Man Liu, Xinying Zhou, Xinyan Zhang.

C053 Gene signature-based approach identifies mTOR as a downstream factor of TRIB1-dependent survival pathways in prostate cancer. Tetsuo Mashima, Ryoko Kinoshita, Sachiko Okabe, Hiroyuki Seimiya.

C054 Cancer stem cells drive liver cancer metastasis in mice. Liqin Zhu, Liyuan Li, Max Qian, David Finkelstein, Melissa Johnson, Armita Bahrami, Dolores H Lopez-Terrada.

C055 Critical roles of FRS2beta, a feedback inhibitor of ErbB-ERK signaling, for communication between cancer stem cells and their niche during mammary tumorigenesis. Yukino Machida, Natsuko Kimura, Arinobu Tojo, Ko-ichi Akashi, Hideyuki Saya, Issay Kitabayashi, Noriko Gotoh.

C056 Suppression of Intestinal Tumors by Targeting the Mitotic Spindle of Intestinal Stem Cells. Ryoji Yao, Jun Oyanagi, Yasuko Natsume, Yumi Kato, Hitomi Yamanaka, Kusama Daisuke, Satoshi Nagayama, Tetsuo Noda.

C057 Functional screen identifies kinases driving prostate cancer visceral and bone metastasis. Claire Faltermeier, Justin M Drake, Peter M Clark, Bryan A Smith, Yang Zong, Carmen Volpe, Colleen Mathis, Brandon Castor, Colm Morrissey, Owen N Witte.

C058 Characterization of sphere cells derived from a PDX lung adenocarcinoma treated with ionizing radiation. Jinhyang Choi, Eunjung Ko, Eun Jin Ju, Jae Hee Lee, Seol Hwa Shin, Si Yeol Song, Seong-Yun Jeong, Eun Kyung Choi.

C059 Screening of small molecule compounds with activity to selectively inhibit the cancer stem cell properties. Amit Subedi, Nobumoto Watanabe, Akihide Ryo, Hiroyuki Osada.

C060 Keap1-Nrf2 Interaction Suppresses Cell Motility in Lung Adenocarcinomas by Targeting the S100P Protein. Kuo-Tai Hua, Ming-Hsien Chien, Min-Liang Kuo.

C061 Cripto-1 expression and its function for tumor progression in human colorectal cancer. Hideaki Karasawa, Jun Sato, Shun Nakayama, Shimpei Maeda, Shinobu Ohnuma, Fuyuhiko Motoi, Takeshi Naitoh, Michiaki Unno.

C062 SET Isoform-2 contributes to the epithelial-mesenchymal transition of pancreatic cancer. Rajgopal Govindarajan, Sau Wai Hung.

C063 Lipocalin 2 prevents oral cancer metastasis through carbonic anhydrase IX inhibition and is associated with favourable prognosis. Chien Ming-Hsien, Lin Chiao-Wen, Yang Shun-Fa.

C064 Loss of Hugi1 induces an EGF-dependent Cellular Transdifferentiation. Erin Greenwood, David Ebertz, Joyce Schroeder.

C065 Focal adhesion kinase-dependent focal adhesion recruitment of SH2 domains directs SRC into focal adhesions and regulate cancer cell adhesion and migration. Jui-Chung Wu, Yu-Chen Chen, Chih-Ting Kuo, Helen Wenshin Yu, Yin-Quan Chen, Arthur Chiou, Jean-Cheng Kuo.

C066 Metastatic prostate cancer cells are endowed with cancer stem cell properties and interact with host cells to establish a proinflammatory microenvironment conducive to metastasis. Kiera Rycaj, Hangwen Li, Mahipal Suraneni, Xin Chen, Collene Jeter, Tammy Calhoun-Davis, Hsueh-Ping Chao, Jiong Chen, Jianhua Hu, Dean Tang.

- C067 Inhibition of metastasis-driving pathways in an orthotopic mouse model for Small Cell Lung Cancer (SCLC).** Sanaz Taromi, Julie Catusse, Friederike Braun, Dominik von Elverfeldt, Robert Zeiser, Meike Burger.
- C068 Rosehip extracts (*Rosa canina*) prevent African American triple negative breast cancer cell migration and invasion by blocking MMP-1/2/9 expression and activity.** Patrice Cagle, Patrick M. Martin.
- C069 Dual roles of a cell adhesion molecule CADM1 in oncogenesis.** Takeshi Ito, Yuki Kumagai, Yumi Tsuboi, Mika Sakurai-Yageta, Motoi Ohba, Yoshinori Murakami.
- C070 An alveolar soft part sarcoma model to explore the mechanisms of tumorigenesis and metastasis.** Miwa Tanaka, Yukari Yamazaki, Mizuki Homme, Takuro Nakamura.
- C071 Senescence from cancer stem cell differentiation promotes tumor growth in glioblastoma.** Rie Ouchi, Sachiko Okabe, Toshiro Migita, Ichiro Nakano, Hiroyuki Seimiya.
- C072 Tartrate-resistant acid phosphatase (TRAP/ACP5) – A regulator of cancer cell progression.** Anja Reithmeier, Shuvojit Moulik, Serhan Zenger, Barbro Ek-Rylander, Göran Andersson.
- C073 Long-IRBIT plays a critical role in cell migration through binding to anion exchange 2.** Hamada Koichi, Ito Ryo, Mitsumori Kousuke, Shinichiro Kato, Hatano Naoya, Mikoshiba Katsuhiko, Mizutani Akihiro.
- C074 TNKS1BP1 regulates the actin filament dynamics and cancer cell invasion.** Haruka Yoshida, Tomokazu Ohishi, Yukiko Muramatsu, Hiroyuki Seimiya.
- C075 Phosphoserine aminotransferase 1 promotes tumorigenesis and metastatic progression through non-metabolic pathway in lung cancer.** Lin Yuan-Feng, Hsiao Michael .
- C076 Translationally Controlled Tumor Protein (TCTP) stimulates cell migration, invasion and metastasis.** Seong-Yeon Bae, Hyun Jung Kim, Kong-Joo Lee, Kyunglim Lee.
- C077 DYRK2 contributes to the generation of breast cancer stem cells through KLF4.** Yoshimi Imawari, Rei Mimoto Kudo, Noriko Yamaguchi, Kiyotsugu Yoshida.
- C078 Decreased expression of TGFBR3 promotes progression of renal cell carcinomas through a multi-step mechanism.** Jun Nishida, Shogo Ehata, Kohei Miyazono.
- C079 Identification of substrates for Ror2 tyrosine kinase receptor, which regulate invasion of osteosarcoma cells.** Makoto Hayashi, Takeshi Saji, Michiru Nishita, Mitsuharu Endo, Yasuhiro Minami.
- C080 Prolonged exposure to TGF- β stabilizes a stem-cell state of breast cancer cells through activation of Akt signaling.** Yoko Katsuno, Kohei Miyazono, Rik Derynck.
- C081 An in vivo shRNA screen identifies HNRNPLL as a novel colorectal cancer metastasis suppressor.** Masahiro Aoki, Keiichiro Sakuma.
- C082 Novel therapeutic approaches targeting cancer stem cells-driven metastasis in oral carcinoma patients.** Silvana Papagerakis, Li Zheng, Dennis Pantazatos, Eleftheria Mavridou, Matthew Newin, Emily Bellile, Henry Chang, Margarite Matossian, Jonathan McHugh, Petros Papagerakis.

Other

C083 Construction of screening system for new AR signaling inhibitors. Yohko Yamazaki, Isao Momose, Manabu Kawada, Masakatsu Shibasaki.

C084 AKR1B10, a transcriptional target of p53, is downregulated in colorectal cancers associated with poor prognosis. Tomoko Ohashi, Masashi Idogawa, Miyuki Tamura, Yasushi Sasaki, Takashi Tokino.

C085 Increase of pancreatic cancer development in pancreas-specific *K-ras* mutant mice by crossing with obesity *A^y* mice and involvement of the M-CSF. Mami Takahashi, Rikako Ishigamori, Michihiro Mutoh, Gen Fujii, Shingo Miyamoto, Takuji Tanaka, Toshio Imai.

C086 Identification of novel radiosensitizers targeting hypoxic cancer cells by high throughput screening. Keisuke Tamari, Yuji Seo, Yutaka Takahashi, Osamu Suzuki, Fumiaki Isohashi, Yasuo Yoshioka, Kazuhiko Ogawa.

C087 DNA methylation based cancer heterogeneity decomposition with deep learning algorithm. Shingo Tsuji, Hiroyuki Aburatani.

C088 MYB-QKI gene rearrangements are specific to angiocentric gliomas and act via a tri-partite mechanism. Payal Jain, Pratiti Bandopadhyay, Lori Ramkissoon, Guillaume Bergthold, Keith Ligon, Rameen Beroukhim, Adam Resnick.

C089 Noncanonical WNT5A regulates the expression of LRP5/6 in osteosarcoma. Masanori Okamoto, Kazushige Yoshida, Kaoru Aoki, Munehisa Kito, Atsushi Tanaka, Shuichiro Suzuki, Akira Takazawa, Yasuo Yoshimura, Hiroyuki Kato, Naoto Saito.

C090 Chronic Obstructive Pulmonary Disease-related Non-Small-Cell Lung Cancer Exhibits a Low Prevalence of EGFR and ALK Driver Mutations. Kim Jin Woo, Yeo Chang Dong, Lee Sang Haak.

C091 Validation study of genetic markers for hematological toxicities in cancer patients receiving gemcitabine therapy. Aya Imai, Hideki Ueno, Chigusa Morizane, Takuji Okusaka, Hiroshi Okamura, Koichi Hirayama, Hirofumi Yamano, Noriaki Nakamura, Kazuma Kiyotani, Yusuke Nakamura, Hitoshi Zembutsu.

C092 Small invasive lung adenocarcinoma: Histopathological periostin expression and ground-glass percentage score on thin-section computed tomography predict tumor recurrence. Kiminori Fujimoto, Ryoji Iwamoto, Akiko Sumi, Asako Kuhara, Shuji Nagata, Toshi Abe.

C093 Antitumor effects for osteosarcoma by multi-walled carbon nanotubes. Kaoru Aoki, Masanori Okamoto, Manabu Tanaka, Takashi Takizawa, Kazushige Yoshida, Atsushi Sobajima, Hiroyuki Kato, Hisao Haniu, Naoto Saito.

C094 Targeted sequencing of cancer-related genes to identify biomarkers for sensitivity to cytotoxic anticancer drugs. Chihiro Udagawa, Takashi Tokino, Yasushi Sasaki, Yasuyuki Ohnishi, Hiroshi Suemizu, Hitoshi Zembutsu.

C095 Serum biomarker screening for BRCTF1-targeted therapy. Hitomi Gunji, Hiroaki Taniguchi, Kohzoh Imai, Goro Kutomi, Hiroaki Shima, Yohei Miyagi, Hitoshi Zembutsu.

C096 High expression of REV7 is an independent prognostic indicator in patients with diffuse large B-cell lymphoma treated with rituximab. Sosei Okina, Nobuyuki Yanagisawa, Maki Yokoyama, Yasutaka Sakurai, Yoshiko Numata, Atsuko Umezawa, Masaaki Higashihara, Yoshiki Murakumo.

C099 Impact of multi-kinase inhibitor lenvatinib in advanced thyroid cancer patients. Akihiro Nishiyama, Hirokazu Taniguchi, Shigeki Nanjo, Hiromichi Ebi, Shinji Takeuchi, Tadaaki Yamada, Kaname Yamashita, Hisatsugu Mouri, Koshiro Otsubo, Seiji Yano.

C100 Effects of PHLDA1 (pleckstrin homology-like domain, family A, member 1) knockdown in mammary epithelial MCF10A cells. Naieli Bonatto, Maria A Nagai.

C101 A luciferin analog improves detection sensitivity of deep-tissue tumor using near-infrared bioluminescence. Takahiro Kuchimaru, Satoshi Iwano, Masahiro Kiyama, Shun Mitsumata, Tetsuya Kadonosono, Haruki Niwa, Shojiro Maki, Shinae Kizaka-Kondoh.

C102 Identification of novel regulatory genes on nucleolar stress response by combination analysis of shRNA library screening in vitro and cancer patient gene expression data base *in silico*. Yohey Kamijo, Kohichi Kawahara, Takuto Kawahata, Takehiro Shiraishi, Fumito Horikuchi, Masatatsu Yamamoto, Yoshinari Shinsato, Kentaro Minami, Toshiyuki Hamada, Kazunari Arima, Tatsuhiko Furukawa.

C103 Identification of bone specific p53 targets by RNA sequence. Yusuke Tsuda, Chizu Tanikawa, Yusuke Nakamura, Satoru Miyano, Seiya Imoto, Rui Yamaguchi, Hidewaki Nakagawa, Koichi Matsuda.

C104 Tumor invasiveness of thymic epithelial tumors evaluated with magnetic resonance imaging: Correlation with the World Health Organization histologic classification and Masaoka-Koga staging system. Asako Kuhara, Kiminori Fujimoto, Akiko Sumi, Tomohiro Ebata, Naoko Ikehara, Ryoji Iwamoto, Junko Sadohara, Shuji Nagata, Toshi Abe.

C105 Sleeping Beauty transposon mutagenesis identified genes that cooperate with Smad4 loss in gastric cancer development. Haruna Takeda, Alistair G Rust, Jerrold M Ward, Nancy A Jenkins, Neal G Copeland.

C106 Novel therapeutic targets for Rhabdomyosarcoma. Monika Wierdl, Lyudmila Tsurkan, Viktor Tollemar, Liying Chi, Chunxu Qu, Xiang Chen, David Finkelstein, Philip M Potter.

C107 Biomarker associated with lymph node metastasis in lung cancer. Apar Pataer, Ignacio I Wistuba, Stephen G Swisher.

C108 Loss of BRCA2 enhances microtubules more stabilization with PTX treatment. Hiroko Saito, Miho Takaoka, Akira Nakanishi, Yoshio Miki.

C109 Clock genes alterations in head and neck cancer. Petros Papagerakis, Li Zheng, Matthew Newin, Dennis Pantazatos, Eleftheria Mavridou, Dong Qing, Kyriakos Daropoulos, Rogerio Castilho, Silvana Papagerakis.

C110 Evaluation of safety and efficacy in biomarker driven multiple agent early phase oncology trials. Motomi Mori, Racky Daffe, Marc Loriaux, Jeffrey Tyner, Stephen Spurgeon, Elie Traer, Brian Druker.

C111 The change of EZH2 expression in adenoma-carcinoma sequence in colorectal cancer. Mayuko Ohuchi, Yasuo Sakamoto, Ryuma Tokunaga, Daisuke Kuroda, Tsugio Eto, Yuka Tamaoki, Kenichi Nakamura, Keisuke Kosumi, Harada Kazuto, Hironobu Shigaki, Junji Kurashige, Masaaki Iwatsuki, Yoshifumi Baba, Yuji Miyamoto, Naoya Yoshida, Hideo Baba.

C112 Gastric cancer obtains invasive ability via C5a receptor. Takayoshi Kaida, Hidetoshi Nitta, Yuki Kitano, Kensuke Yamamura, Arima Kota, Higashi Takaaki, Taki Katsunobu, Imai Katsunori, Daisuke Hashimoto, Akira Chikamoto, Toru Beppu, Hideo Baba.

C113 The protective effect of AFA-501 from the chemodrug-induced immunosuppression. Chiung-Wen Liou, Wei-Wei Chen, Yun-I Chang, Wan-Yjun Wei, Tainang Huang, Mei-Nan Tuan, Jia-Ming Chang.

Tumor microenvironment

C114 Tumor-associated macrophages induce capillary morphogenesis of lymphatic endothelial cells derived from human gastric cancer. Hiroaki Tanaka, Yukie Tauchi, Kenjiro Kimura, Katsunobu Sakurai, Tatsuro Tamura, Takahiro Toyokawa, Ryosuke Amano, Naoshi Kubo, Kazuya Muguruma, Masaichi Ohira, Kosei Hirakawa.