



Conference Program and Schedule at a Glance

3:45 p.m.-6:15 p.m. Poster Session A

Constitution Ballrooms, A/B, p. 27

Analytical Methods

- Administrative and Large-Scale Database Methods
- Bioinformatics
- Multilevel Analysis
- Statistical and Epidemiological Models

Behavioral and Social Science

Alcohol, Tobacco, and Substance Abuse
Cancer Communications
Community-based Interventions
Decision Making
Diffusion and Dissemination Research
Genetic Testing and Counseling
Health Education

Biomarkers

- Biomarkers of Premalignant Lesions
- Biomarkers of Risk and Surrogate Endpoints
- Novel Technologies

Cancer Treatment and Outcomes

- Drug Design, Discovery, and Delivery
- Late Effects/Survivorship
- Proteomics, Chemogenomics, and Chemoinformatics
- Quality of Life
- Second Cancers
- Other

Carcinogenesis

Animal Models of Carcinogenesis
DNA Damage and Repair Mechanisms
Tumor Promotion and Progression

Epidemiology, Lifestyle, and Genetics

- Familial and Genetic Epidemiology
- General Epidemiology and Biostatistics
- Neighborhood Factors
- Obesity, Metabolism, and Cancer
- Physical Activity and Energy Balance
- Race, Admixture, and Ethnicity
- Stress
- Other Risk Factors

Health Economics, Outcomes, and Policy Research

- Healthcare Systems
- Health Economics, Policy, and Outcomes
- Treatment Factors and Outcomes

Tuesday, September 20

8:00 a.m.-9:45 a.m. Plenary Session 4

Cancer Screening: Multilevel Challenges in Vulnerable Populations

Chairperson: Stephen H. Taplin, Constitution
Ballrooms C/D/E, p. 35

9:45 a.m.-12:15 p.m. Poster Session B

Constitution Ballrooms A/B, p. 36

Behavioral and Social Science

Community-based Participatory Research
Recruitment/Retention/Adherence Research
Socioeconomic Influences
Stress
Other

Cell, Molecular, and Tumor Biology

Cancer Genetics/Gene Expression
DNA Methylation/Epigenetics and
Chromatin Regulation
Other

Epidemiology, Lifestyle, and Genetics

Behavioral Epidemiology
Diet and Nutrition
Exercise and Prevention
Molecular Epidemiology

Organ Site Research

- Breast Cancer
- Colorectal Cancer
- Gastrointestinal Cancers
- Genitourinary Cancers
- Gynecological Cancers
- Head and Neck Cancers
- Lung Cancer
- Other Organ Sites

Prevention Research

- Prevention Behaviors
- Screening and Early Detection
- Vaccines and Immunoprevention

12:15 p.m.-12:45 p.m. Lunch Break (on own)

Conference Program and Schedule at a Glance

Wednesday, September 21

**Pharmacogenetics of Cancer Therapy:
Challenges and Opportunities**
Chairperson: Francis Ali-Osman, Constitution
Ballrooms C/D/E, p. 48

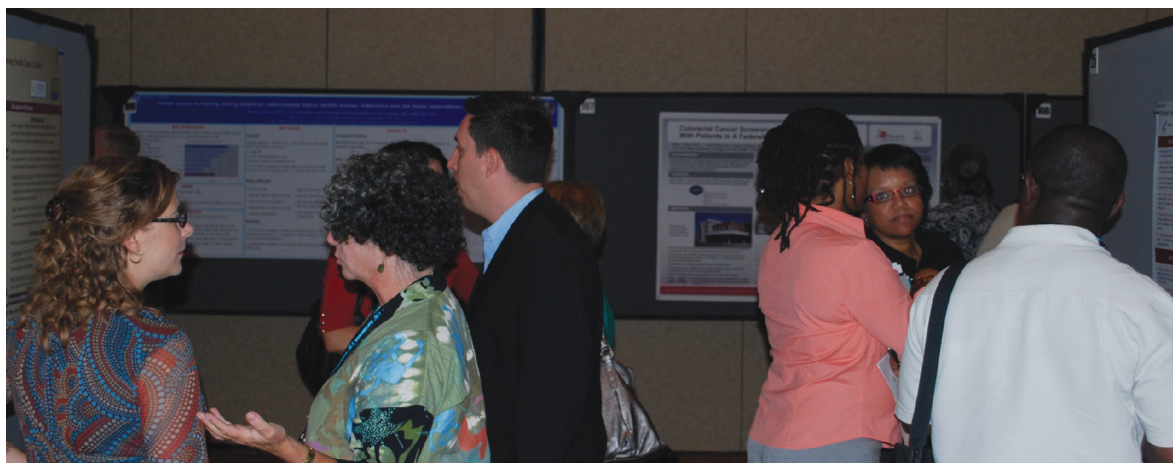
Constitution Ballroom Fover

Ensuring a Diverse Scientific Workforce of the Future
Constitution Ballrooms C/D/E, p. 49

Genomics and Epigenomics of Cancer Disparities
Chairperson: Steven R. Patierno, Constitution
 Ballrooms C/D/E, p. 50

Constitution Ballrooms C/D/E

Patient Navigation in Cancer Care: Results from the Patient Navigation Research Program
Chairperson: Electra D. Paskett, Constitution Ballrooms C/D/E, p. 47

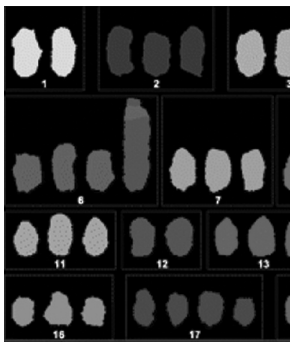


Conference Program and Schedule at a Glance

Sunday, September 18
11:30 a.m.-1:00 p.m.

[illegible]

Program and Proceedings • September 18-21, 2011 • Washington, DC



Educational Sessions

Sunday, September 18
1:00 p.m.-2:30 p.m.

Educational Session 1

Biobanking: A Tricky Endeavor

Constitution Ballrooms A/B

Chairperson: Peter G. Shields, Georgetown University Medical Center, Washington, DC

Developing and using biorepositories that lead to impactful science provides numerous challenges, more so when focusing on cancer-related health disparities. This session will provide the audience with information about challenges in consenting subjects and establishing repositories (including with community participation) and best practices for collection and usage.

Introduction

Peter G. Shields

Overview of biorepository best practices [ED01-01]*

Jimmie B. Vaught, National Cancer Institute,
Bethesda, MD

Biospecimen management: Special considerations for minority populations

Nicole C. Lockhart, National Cancer Institute,
Bethesda, MD

Collecting blood biospecimens from Asian American
communities through trust and informed consent
[ED01-03]*

Julie H.T. Dang, University of California Davis
Cancer Center, Sacramento, CA

Educational Session 2

How Do We Measure Disparities and Assess Progress?

Constitution Ballrooms C/D/E

Chairperson: Sam Harper, McGill University,
Montreal, QC, Canada

Conceptual and methodological issues on measuring progress

Sam Harper

How we measure and track health disparities in the Healthy People 2010 Final Review [ED02-02]*

Makram Talih, Centers for Disease Control and Prevention/National Center for Health Statistics, Hyattsville, MD

Measuring disparities by level of education and insurance status

Elizabeth M. Ward, American Cancer Society,
Atlanta, GA

[illegible]

*An extended abstract for this presentation is available in the Invited Abstracts section of this book. (The abstract number is listed in brackets.)

Constitution Ballrooms C/D/E

Chairperson: Yolanda Moses, University of California, Riverside, CA

“RACE: Are We So Different?” is a project of the American Anthropological Association, which was developed in collaboration with social and biological scientists in order to educate the public and researchers on current understanding and controversies concerning race and racism. The project includes an exhibit, which is currently on display at the Smithsonian Institute. Key concepts in the display include the nature of race/ethnicity, social determinants vs. genomic/genetic determination of racial categorization, the impact of racial categorization upon health disparities, and the impact of genomics upon cancer health disparities.

Overview of The RACE Project

Yolanda Moses

Are we moving beyond race in clinical care?
[ED04-02]*

Vence L. Bonham, National Institutes of Health,
Bethesda, MD

Genetic variation among populations [ED04-03]*

Tools for analysis of genome-wide methylation data:
An application to prostate cancer [ED03-03]*

Kenneth K. Kidd, Yale University School of Medicine, New Haven, CT

Joseph M. Devaney, George Washington University, Washington, DC

Perspectives on the production of race and cancer disparities [ED04-04]*

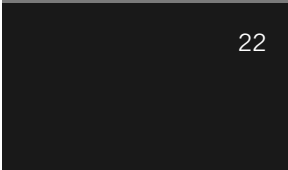
Developing molecular markers for solid tumor detection and the promise of epigenetic therapy [ED03-04]*

Juliet McMullin, University of California,
Riverside, CA

Malcolm V. Brock, Johns Hopkins University
School of Medicine, Baltimore, MD

*An extended abstract for this presentation is available in the Invited Abstracts section of this book. (The abstract number is listed in brackets.)

**18 Sunday,
September**



THE SCIENCE OF CANCER HEALTH DISPARITIES IN RACIAL/ETHNIC MINORITIES AND THE MEDICALLY UNDERSERVED

Monday, September 19
8:00 a.m.-9:45 a.m.

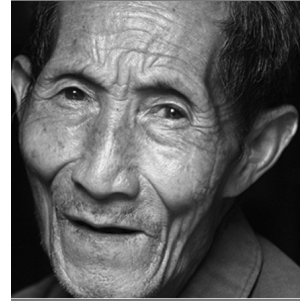
Constitution Ballrooms C/D/E

Richard F. Ambinder

David A. Thorley-Lawson, Tufts University, Boston, MA

Sam M. Mbulaiteye, National Cancer Institute, Bethesda, MD

Robert A. Baiocchi, The Ohio State University, Columbus, OH

[illegible]

*An extended abstract for this presentation is available in the Invited Abstracts section of this book. (The abstract number is listed in brackets.)

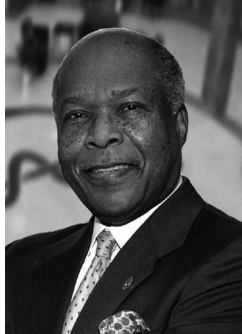


Keynote Session

Monday, September 19
9:45 a.m.-10:45 a.m.

Towards a Future without Health Disparities

Constitution Ballrooms C/D/E



Louis W. Sullivan

Former U.S. Secretary of Health and Human Services
Founding Dean and First President of
Morehouse School of Medicine
Atlanta, GA

Over his long and distinguished career in medicine and health policy, Louis W. Sullivan, M.D., has championed efforts to overcome health disparities in the U.S. and to inspire students from minority populations to enter the scientific and health care professions. Early in his career he served as the founding dean

and first director of the Morehouse School of Medicine, the first medical school established at a Historically Black College in the 20th century. Later, as Secretary of Health and Human Services (HHS) from 1989 to 1993, Dr. Sullivan led efforts to improve the health and health behaviors of all Americans through multiple public health strategies, and he promoted increased gender and ethnic diversity in senior positions at HHS. Hear from Dr. Sullivan, who will provide an invaluable perspective on how we in America can overcome health disparities through science, a strong and diverse medical workforce, and improved health behaviors by our populations.

[illegible]

Constitution Ballrooms C/D/E

**19 Monday,
September**

Global disparities and prevention strategies in liver cancer [PL02-01]*

Community-centered HBV/liver cancer control interventions for Asian Americans
[PL02-02]*

Moon S. Chen, Jr., University of California Davis Cancer Center, Sacramento, CA

Hepatocellular carcinoma research and prevention in South Texas: The imperative**

Amelie G. Ramirez, University of Texas Health Science Center at San Antonio, San Antonio, TX

Genes, environment, and cancer

Curtis C. Harris, National Cancer Institute, Bethesda, MD

*An extended abstract for this presentation is available in the Invited Abstracts section of this book. (The abstract number is listed in brackets.)

**An extended abstract for this Proffered Talk is available on page 115.



Monday, September 19
2:00 p.m.-3:45 p.m.

Constitution Ballrooms C/D/E

Chairperson: Judy E. Garber, Dana-Farber Cancer Institute, Boston, MA

High-risk/triple-negative breast cancer and African ancestry [PL03-03]*

Lisa A. Newman, University of Michigan Comprehensive Cancer Center, Ann Arbor, MI

Biology of triple-negative breast cancer

James M. Ford, Stanford University School of Medicine, Stanford, CA

Treatment for triple-negative breast cancer: What's new?

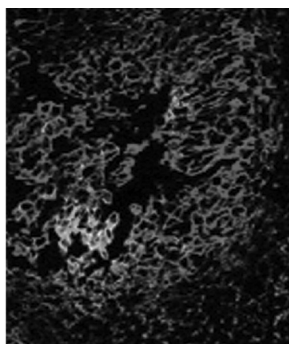
Judy E. Garber

Warburg effect revisited: Glucose addiction in precancerous mammary epithelial cells in African American women**

Victoria L. Seewaldt, Duke University, Durham, NC

*An extended abstract for this presentation is available in the Invited Abstracts section of this book. (The abstract number is listed in brackets.)

**An extended abstract for this Proffered Talk is available on page 131.



Poster Session A

Constitution Ballrooms A/B

Monday, September 19
3:45 p.m.-6:15 p.m.

Biomarkers

Biomarkers of Premalignant Lesions

A45 Molecular targets in early detection and differentiation of inflammatory bowel disease associated colon-rectal-anal cancer disparities. Joan C. Smith, Richard M. Caprioli, Samuel E. Adunyah, Amosy E. M'Koma, Michael W. Schäffer, Roland S. Cooper, Derrick J. Beech, Steven N. Wolff, Erin H. Seeley, Harold L. Moses, Billy R. Ballard.

Biomarkers of Risk and Surrogate Endpoints

A46 Genomic ancestry is associated with risk group and survival in children with neuroblastoma. Navin R. Pinto, Eric R. Gamazon, Anuar Konkashbaev, Nancy J. Cox, M. Eileen Dolan, Sharon J. Diskin, Wendy B. London, Marcella Devoto, John M. Maris, Susan L. Cohn.

Novel Technologies

A47 Prostate biopsy tissue print technologies: A practical and innovative approach to overcoming racial disparities in the datasets used for prostate cancer biomarker development. Sandra M. Gaston, Gary P. Kearney, William E. Grizzle.

Cancer Treatment and Outcomes

Drug Design, Discovery, and Delivery

A48 Cost-effective topical delivery of chemotherapy to treat cervical dysplasia and prevent progression to HPV-associated cervical cancer in the low-resource setting. Stephen I-Hong Hsu, Michael Wood, Edward J. Wilkinson.

A49 Multifunctional nanocarriers against cervical cancer. Mary R. Saunders, David J. Olivos, Ryan G. Lim, Lorenzo Berti, Kit S. Lam.

A50 Targeting nanotherapeutics for breast, ovarian, and prostate cancer. David John Olivos, Mary R. Saunders, Laura Ramirez, Nicholas Banford, Julie-Marie Quattrocchi, Kit S. Lam.

Late Effects/Survivorship

A51 Postsurgery survival improvement of breast cancer in a community hospital in New York City during the periods 1997-2004 vs. 2005-2010. Awinder P. Singh, Hua Wang, Aleem Surani, Gina M. Villani, Marcia A. Chung, Dongsheng Cai, Alan R. Go, Peter J. Pappas.

A52 A pilot study to examine patient awareness and provider discussion of the impact of cancer treatment on fertility in a registry-based sample of African American women with breast cancer. Juliette Christie, Tuya Pal, Gwendolyn Quinn, Patrice Fleming, Caitlin Stowe, Bethanne Bower, Susan Vadaparampil.

A53 Disparities in health information needs among long-term cancer survivors. Erin E. Kent, Neeraj K. Arora, Keith M. Bellizzi, Noreen M. Aziz, Ann S. Hamilton, Ingrid Oakley-Girvan, Julia H. Rowland.

A54 Significant survival improvement of colorectal cancer following surgery from 1997-2004 to 2005-2010 periods in a community hospital in New York City. Hua Wang, Peter J. Pappas, Awinder P. Singh, Zhong Wang, Aleem Surani, Wess Cohen, Larry Griffith, Dongsheng Cai, Armand P. Asarian.

A55 Racial differences in colorectal cancer surveillance in South Carolina. Marvella E. Ford, Nestor F. Esnaola, Chris Finney, Katherine R. Streba, Melanie S. Jefferson, Kent Armeson, Jane G. Zapka.

Poster Session A

Constitution Ballrooms A/B

Monday, September 19
3:45 p.m.-6:15 p.m.

Proteomics, Chemogenomics, and Chemoinformatics

A57 Distinctive phosphoprotein profiles in a benign breast tissue, and triple-negative primary and metastatic breast cancer tissues from the same African-American woman by LC-LTQ/FT-ICR mass spectrometry. Suzan M. Semaan, Xu Wang, Paul A. Stewart, Alan G. Marshall, Qing-Xiang Amy Sang.

Quality of Life

A58 Impact of Nueva Vida's model on quality of life, distress levels and self efficacy in Latinas with breast cancer. Larisa Caicedo, Karlynn BrintzenhofeSzoc, James Zabora, Claudia Campos, Marcela Blinka, Florencia Gonzalez, Lynne McIntyre.

A59 Sociodemographic predictors for poor quality of life among urban minority oncology patients. Trevor Lee, Dana Massie, Abraham Aragon, Jennifer Leng, Julia Ramirez, Francesca Gany.

Second Cancers

A60 Second primary breast cancer incidence rates among black and white female breast cancer survivors. Hala Nsouli-Maktabi, Donald E. Henson, Naji Younes, Heather A. Young, Sean D. Cleary.

Other

A61 Modulation of proteasome expression in dendritic cells and melanoma cells. John L. Robinson, Amy Mackay, Shari Pilon-Thomas.

A62 Secular trends and disparity of adjuvant hormone therapy use for ductal carcinoma in situ: National Cancer Data Base, 1998-

2007. Ningqi Hou, Katharine Yao, David J. Winchester, Nora Jaskowiak, David P. Winchester, Dezheng Huo.

A63 Outcome disparities in high-grade soft tissue sarcomas: A comprehensive cancer center's experience. Valerae O. Lewis, Amalia M. DeComas, Sijin Wen, Patrick P. Lin, Bryan S. Moon, Robert L. Satcher, Raphael E. Pollock, Peter F. Thall.

Carcinogenesis

Animal Models of Carcinogenesis

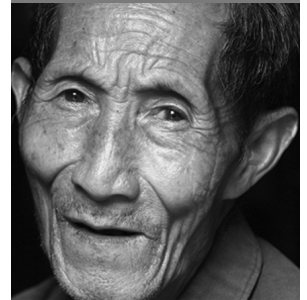
A64 The development of novel cell culture models and preclinical models of lymphangioliomyomatosis. Tasha A. Morrison, Jane Yu, Elizabeth P. Henske.

DNA Damage and Repair Mechanisms

A65 RNF8: The molecular modulator of breast cancer aggressiveness. Iván Anduro-Corona, Luis Enrique Gutiérrez-Millán, Julie Buckmeier, Giovanna Cruz, María Elena Martínez, Melissa Bondy, Patricia Thompson.

Tumor Promotion and Progression

A66 β arrestin2 contributes to aggressive tumor growth in African American prostate cancer cells. Ariel J. Thomas, Elizabeth J. Akins-Rivers.



19 Monday,
September

19 Monday,
September

19 Monday,
September

19 Monday,
September

19 Monday,
September

19 Monday,
September

19 Monday,
September

19 Monday,
September

19 Monday,
September

19 Monday,
September

19 Monday,
September

19 Monday,
September

19 Monday,
September

19 Monday,
September

19 Monday,
September



19 Monday, September

Poster Session A

Constitution Ballrooms A/B

Monday, September 19
3:45 p.m.-6:15 p.m.

Epidemiology, Lifestyle, and Genetics

Familial and Genetic Epidemiology

A67 IL-16 variants associated with prostate cancer risk in African Americans. Ken Batai, Erin Beisner, Ebony Shah, Lauren Castaneda, Demetria Smith, Adam Murphy, Rick A. Kittles.

A68 Familial colorectal cancer registry in Hispanics: A feasibility study. María Eugenia Lozada, Raúl Bernabe-Dones, Reynold López-Enriquez, Robert Haile, Rafael Mosquera-Fernández, Marcia R. Cruz-Correa, Yaritza Díaz-Algorri, Delma Acosta, Cristina Nuñez, Edwin Rosado, Mariela Torres-Cintrón, Nayda Figueroa-Vallés, Alberto Cardona, Mercedes Lacourt-Ventura.

A69 Identification of prostate cancer genes in the African American Hereditary Prostate Cancer (AAHPC) study. Luisel J. Ricks-Santi, Tshela Mason, Muneer Abbas, Georgia M. Dunston, Supraja Kolluri, Bert Gold, Kate Im, James Lautenberger, Michael Dean, Joan Bailey-Wilson, John Carpten, Chiledum Ahaghotu.

A70 Chemokine-associated genetic variants as predictors of prostate cancer outcomes among men of African descent. LaCreis R. Kidd, Dominique Jones, Camille Ragin, Maria Jackson, Norma McFarlane-Anderson, Rafael Flores-Obando, Kevin Kimbro.

A71 BRCA mutations and surgical decision making in a sample of young black women with invasive breast cancer. Patrice J. Fleming, Susan T. Vadaparampil, Devon Bonner, Alvaro N. Monteiro, Lisa Kessler, Robert Royer, Steven Narod, Tuyra Pal.

General Epidemiology and Biostatistics

A72 Occupational sunlight exposure, race, and risk of renal cancer. Sara Karami, Mark P. Purdue, Joanne S. Colt, Kendra Schwartz, Lee E. Moore, Patricia A. Stewart, Faith G. Davis, Julie J. Ruterbusch, Wong-Ho Chow, Sholom Wacholder, Barry I. Graubard.

A73 Improving colorectal cancer surveys for New Mexico Hispanics. Melissa Gonzales, Maria Otero, Richard Hoffman.

A74 A dichotomy between the risk and histology in bladder cancer among blacks and whites: An epidemiological study. Michael J. Paskow, Donald E. Henson, Heather A. Young, Steven R. Patierno.

A75 Preexisting kidney disorders and risk of renal cell carcinoma: Results from a population-based case-control study of Caucasians and African Americans. Jonathan N. Hofmann, Kendra Schwartz, Wong-Ho Chow, Julie J. Ruterbusch, Nathaniel Rothman, Sholom Wacholder, Joanne S. Colt, Mark P. Purdue.

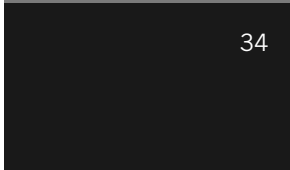
A76 Cervical cancer survival in Puerto Rico: Disparities by health care coverage. Yomayra Otero, Karen J. Ortiz-Ortiz, Mariela Torres, Javier Perez, Nayda Figueroa, Ana P. Ortiz.

A77 Impact of cancer status on survival of persons living with AIDS in Puerto Rico. Ana Patricia Ortiz, Marievelisse Soto-Salgado, Javier Perez, Erick L. Suarez, Naydi Perez, Maritza Cruz, Sandra Miranda, Joel Palefsky, Guillermo Tortolero-Luna, Vivian Colón .

Neighborhood Factors

A78 Cancer in Hinkley: What was the real problem? John W. Morgan, Mark E. Reeves.

A79 Socioeconomic status, health care density, and risk of prostate cancer among African-American men in a large prospective study. Jacqueline M. Major, M. Norman Oliver, Chyke A. Doubeni, Barry I. Graubard, Rashmi Sinha.



Monday, September 19
3:45 p.m.-6:15 p.m.

Other Risk Factors

A93 Correlates of total testosterone and testosterone deficiency in African American men. Adam B. Murphy, Yaw Nyame, Brian Kelley, Chiledum A. Ahaghotu, Rick A. Kittles.

A94 Assessment of Westernization in Mexican women with breast cancer. Jesse Nodora, Scott Carvajal, Rebeca Robles, Francisco Paez Agraz, Mercedes Meza, Adrian Daneri, Luis Enrique Gutierrez, Maria Elena Martinez.

Health, Economics, Outcomes, and Policy Research

Healthcare Systems

A96 Breast cancer screening resources and early-stage diagnosis in Appalachia: A geospatial perspective. Nengliang (Aaron) Yao, Marianne Hillemeier, Roger Anderson.

A97 An analysis of diversity based on race and ethnicity in the radiation oncology workforce. Christina H. Chapman, Curtiland Deville.

A98 Physician social networks and variation in prostate cancer treatment in three cities. Craig Evan Pollack, Gary Weissman, Justin Bekelman, K.J. Liao, Katrina Armstrong.

A99 Racial disparities in receipt of prostatectomy from a high-volume urologist: The role of diagnosing urologists and doctor changing. Craig Evan Pollack, Justin Bekelman, Andrew J. Epstein, K.J. Liao, Yu-Ning Wong, Katrina Armstrong.

A100 Timely follow-up after an abnormal breast and cervical cancer screening among underserved, urban women in a patient navigation program. Talar Markossian, Elizabeth Calhoun, Julie Darnell.

A101 Quality improvement as a tool to reduce health outcomes disparities in breast cancer: The Chicago Breast Cancer Quality Consortium as a model. Anne Marie Murphy, Danielle Dupuy, Jennifer Orsi, Garth Rauscher.

Health Economics, Policy, and Outcomes

A103 Disparities in time-to-diagnosis and time-to-treatment of breast cancer in four Appalachian states. Christopher J. Louis, Nengliang Yao, Marianne Hillemeier, Roger Anderson, Tareq Fabian Camacho.

A104 The impact of insurance instability and care after abnormal cancer screening. Karen M Freund, Amresh Hanchate, Alexis P. Isabelle, Alok Kapoor, Sharon Bak, Marc Flore, Rebecca Grochow, Swati Shroff, Tracy A. Battaglia.

Treatment Factors and Outcomes

A105 Application of national guidelines diminishes racial disparities in end-of-life cancer care. Laura K. Austin, Delinda Pendleton, Fang Zhu, Paul Enstrom, Michael Levy, Ramona F. Swaby.

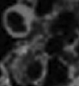
A106 Patient, provider, protocol, and health systems barriers to cancer clinical trial accrual at an academic medical center: Identifying interventions to increase representation of racial/ethnic minorities. James Ward, Blase Polite.

A107 Income disparities in the receipt and adherence to adjuvant hormonal therapy in a cohort of young estrogen receptor positive breast cancer cases. Jean A. McDougall, Christopher J. Li.

A108 Racial/ethnic disparities in prostate cancer treatment persist. Heather Orom, Alicia Brasel, Willie Underwood.

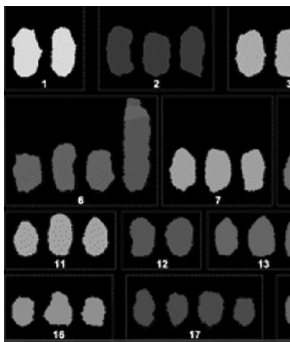
Tuesday, September 20
8:00 a.m.-9:45 a.m.

Constitution Ballrooms C/D/E

[illegible]

Population impact: Using modeling to evaluate contributions of screening, treatment, and biology on disparities in breast cancer outcomes [PL04-04]*
Jeanne Mandelblatt, Georgetown Lombardi Comprehensive Cancer Center, Washington, DC

Program and Proceedings • September 18-21, 2011 • Washington, DC



Poster Session B

Constitution Ballrooms A/B

Tuesday, September 20
9:45 a.m.-12:15 p.m.

Behavioral and Social Science

Community-based Participatory Research

B1 Dissemination of colorectal cancer screening by Filipino American community health advisors: A feasibility study. Annette E. Maxwell, Leda L. Danao, Roshan Bastani.

B2 Applying audience response systems in community-based research. Jenna L. Davis, Kara E. McGinnis, Margaret L. Walsh, Coni Williams, B. Lee Green, Kevin Sneed, Deanna Wathington, Maisha Standifer, Julie Baldwin.

B3 A novel participatory approach to increasing colon cancer screening in community health centers. Aimee James, Jean Wang, Kristen Massey, Graham Colditz.

B5 Region Five GMaP/BMaP Network:
Preliminary findings from the comprehensive needs assessment principal investigator survey. Linda Fleisher, Carrie Norbeck, Melissa Simon, Erika de la Riva, Venk Kandadai, Anthony Giannoumis, Stacy N. Davis, Delroy Loudon, Julian Schink, Robert Beck.

B6 Region Five GMaP/BMaP Network:
Preliminary findings from the comprehensive needs assessment biospecimen facility survey. Melissa A. Simon, Julian C. Schink, Erika E. de la Riva, Linda Fleisher, Carrie Norbeck, Venk Kandadai, Stacy N. Davis, Raymond Bergan, Robert Beck, Delroy M. Loudon.

B7 Community-based physical activity and impacts on health disparities for men of color. Sanford E. Jeames, Sarah Witkowski.

B8 Bringing science to underserved communities: Using community-based participatory research to evaluate biobanking educational materials. Kristen J. Wells, Francisco A. Montiel-Ishino, Shalanda A. Bynum, Juan S. Luque, Clement K. Gwede, Shalewa A. Noel-Thomas, Ji-Hyun Lee, Cathy D. Meade, Mariana Arevalo, Gwendolyn P. Quinn, Paul Jacobsen , Dale Watson, Gloria San Miguel, Jim W. West, Carmen Reyes, Margarita Romo.

B9 Community strategies for investigating the biology of breast and cervical cancer initiation in African-American women. Endya L. Frye, Anne Ford, LaMisha Banks, Xiomara Boyce, Stephanie Robertson, Catherine Ibarra-Drendall, Victoria Seewaldt.

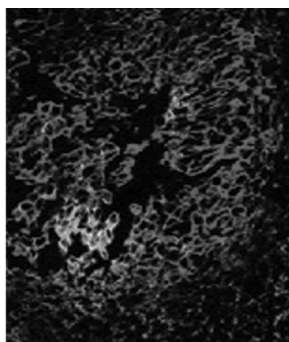
B10 Utilizing community-based participatory research and emerging technology to design a theory-based health education intervention on prostate cancer for African American men. Euna M. August, Sean Dickerson, Dawood Sultan, B. Lee Green, Richard Roetzheim, Brian M. Rivers.

B11 Effect of patient navigation on colorectal cancer screening in a community-based randomized controlled trial of urban African American Medicare beneficiaries. Hisani N. Horne, Diane Markakis, Darcy F. Phelan, Craig E. Pollack, Jennifer Wenzel, Mary A. Garza, Gary R. Shapiro, Lee Bone, Lawrence Johnson, Jean G. Ford.

B12 GMaP and BMaP community collaboration: Addressing colorectal cancer on a regional level. Beti Thompson, Elizabeth Klonoff, Heidi Harbach, Ebere Iweriebor.

B13 Lessons learned from implementing a prostate cancer risk assessment program for underserved high-risk men: The Prostate REACH Project. Linda Fleisher, Veda N. Giri, Stacy N. Davis, Cheryl Rusten, Jerilyn Baskett, Laura Gross, Loretta Bagden, Debra Zakrzewski, Evelyn González, Venk Kandadai.

**20 Tuesday,
September**

[illegible]

Constitution Ballrooms A/B

Tuesday, September 20
9:45 a.m.-12:15 p.m.

Cancer Genetics/Gene Expression

B37 Differential mRNA expression, microRNA regulation, and gene networks are associated with the prostate cancer disparities in African American and Caucasian American populations. Bi-Dar Wang, Ramez Andrawis, Thomas Jarrett, Harold Frazier, Steven R. Patierno, Norman H. Lee.

B40 micro-RNA-128-regulated gene expression in head and neck squamous cell carcinoma. Belinda Hauser, Yubin Hao, Xinbin Gu, Joseph Califano.

B41 Molecular linkages between metabolic imbalance, genome stability and triple-negative breast cancer. Jung S. Byun, Tara J. Taylor, Clay Wakano, Li-jun Di, Galina Khramtsova, Olufunmilayo I. Olopade, Kevin Gardner.

B42 A comprehensive resequence-analysis of 250kb region of 8q24 in Africans. Charles C. Chung, Joseph Boland, Stephen J Chanock, Ann W. Hsing, Meredith Yeager, Edward Yeboah, Richard Biritwum, Yao Tettey, Andrew Adjei, Angelo De Marzo, George Netto.

DNA Methylation/Epigenetics and Chromatin Regulation

B43 Early detection biomarker of pancreatic cancer using a nanoparticle-based methylation assay. Joo Mi Yi , Vasudev Bailey, Stephanie Downing, Michael Goggins, Kwang Mo Yang, Tza-Huei Wang, James Herman, Stephen B. Baylin, Nita Ahuja.

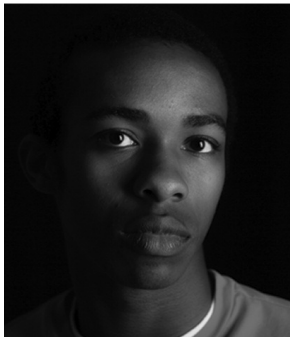
B32 The importance of BP1 and EMT in breast cancer of African American women. Nguyen H. Thuan, Bin-Jin Hwang, William E. Grizzle, Patricia E. Berg.

B33 Differential responses of Caucasian and African American breast cancer cell lines after EGCG and sulforaphane treatment. Tabitha M. Hardy, Trygve O. Tollefsbol.

B34 Increase in EGFR level through SLUG-induced repression of dynactin 5 in triple-negative breast cancer cells. Mukul K. Mittal, Raju Ramasamy, Gautam Chaudhuri.

B35 SLUG-induced plakoglobin gene repression in triple-negative breast cancer cells. Charvann K. Bailey, Mukul K. Mittal, Smita Misra, Gautam Chaudhuri.

B36 Development of calcitriol-resistance in triple negative breast cancer cells through SLUG-mediated coordinate repression of CYP2R1, CYP27B1 and VDR gene promoters. Shari M. Johnson, Mukul K. Mittal, Charvann K. Bailey, Smita Misra, Gautam Chaudhuri.

[illegible]

Poster Session B

Constitution Ballrooms A/B

Tuesday, September 20
9:45 a.m.-12:15 p.m.

Molecular Epidemiology

B59 Patterns of breast cancer mortality over 10 years by tumor phenotype and Hispanic versus non-Hispanic white ethnicity. Stephanie R. Denkhoff, Kathy B. Baumgartner, Christina M. Pinkston, Dongyan Yang, Richard N. Baumgartner.

B60 Hsa-miR-27a drives an association of MBL2 3'UTR haplotype with colon cancer risk in African Americans. Majda Haznadar, Krista Zanetti, Ana Robles, Brid Ryan, Andrew McClary, Curtis Harris.

B61 Insights into lung cancer survival in African Americans from a study of germline variation in the microRNA network. Brid M. Ryan, Dillon Robinson, Kara Calhoun, Ana I. Robles, Nicola Valeri, Carlo Croce, Curtis C. Harris.

Organ Site Research

Breast Cancer

B62 Beta-2 adrenergic receptor polymorphisms and risk of breast cancer among Hispanic and non-Hispanic white women: The 4-Corners Breast Cancer Study. Avonne E. Connor, Richard Baumgartner, Richard Kerber, Liz O'Brien, Shesh Rai, Marty L. Slattery, Roger K. Wolff, Anna R. Giuliano, Tim Byers, Kathy B. Baumgartner.

B63 ESR1 variants are not associated with breast cancer in African American women. Heather M. Ochs-Balcom, Lara Sucheston, Song Liu, Carolyn Hutter, Alicia Young, Ulrike Peters, Rowan Chlebowski, Jean Wactawski-Wende.

B64 Low estrogen receptor expression level and early age of breast cancer onset are the common breast cancer features in Arab population. Mariam Al Dhaheri.

B65 Coordinated care model to reduce rural disparities in breast cancer mortality. Sarah J. Gehlert, Courtney Beers, Graham A. Colditz.

B66 Breast cancer outcomes among Hispanic women by race. Matthew Banegas, Christopher Li.

B67 Phenotype-specific role for protein kinase CK2 in luminal and basal-like breast cancer cells. Christopher Charles Williams, Michelyn C. Patton, Melody M. Campbell.

B68 The influence of primary care on breast cancer outcomes among Medicare beneficiaries. Richard G. Roetzheim, Jeanne M. Ferrante, Ji-Hyun Lee, Ren Chen, Kymia M. Love-Jackson, Eduardo C. Gonzalez, Ellen P. McCarthy.

B69 SHP2 as a novel therapeutic target for triple-negative breast cancer. Fatimah Mataalka, Yehenew Agazie.

Colorectal Cancer

B70 Race, age, and advanced stage colorectal cancer survival. Kristin Wallace, Stephanie Oppenheimer, Marvella E. Ford, Grace Williamson, Anthony J. Alberg.

B71 Segmental analysis of colorectal cancer in California by race/ethnicity, 2001-2008. Myung Mi Cho, Kshema Nagavedu, Sumana Chenna, John W. Morgan.

Gastrointestinal Cancers

B73 The Chicago Colorectal Cancer Consortium (CCCC), a step forward in understanding colorectal cancer in African Americans. Rosa M. Xicola, Molly Gagnon, Shilpa Ravella, G.W. Douglas, James B. Rawson, Gluskin Adam, Jennifer Brock, Gabiera Lidiane, Katy Cerye, Tanya Bhattacharya, Reema Patel, Sidhartha Chaudhry, Jacob Shaw, Grace Guzman, Vivek Chaudhry, Sonia Kupfer, Josh Melson, Vincent Freeman, Hui Xie, Carol Braunschweig, Nathan Ellis, Xavier Llor, Gary Rodriguez, CenK K Pusatcioglu, Julia Clark, Amy Disharoon, Ashley Janoski, Kathryn Morrissey, Mathryn Mraz.





Poster Session B

Constitution Ballrooms A/B

Tuesday, September 20
9:45 a.m.-12:15 p.m.

B86 HIV and HPV risk and prevention factors among Tongan and Chamorro young adults in Southern California: A qualitative assessment.

Anthony DiStefano, Jay Aromin, Jeany Dimaculangan, `Isileli Vunileva, Sora P. Tanjasiri, Ruth Peters, Vanessa Tui`one, Lois Takahashi, Lola Sablan-Santos, Lourdes Quitugu, Joey Quenga, Brian Hui, Angelica Barrera-Nq.

Screening and Early Detection

B87 The effect of imaging on clinical management of breast pain. Mary Beth Howard, Tracy A. Battaglia, Karen M. Freund.

B89/PR2 Warburg effect revisited: Glucose addiction in precancerous mammary epithelial cells in African American women. Catherine Ibarra-Drendall, Chris Sistrunk, Abigail Hoffman, Ane Ford, Victoria Louise Seewaldt.

B90 Patient navigation significantly reduces delays in breast cancer diagnosis in the District of Columbia. Heather J. Hoffman, Nancy L. LaVerda, Paul H. Levine, Heather A. Young, Lisa M. Alexander, Steven R. Patierno, DC-PNRP Research Group.

B91 Strategies toward improving the uptake of colorectal cancer screening among underserved communities: Providers' perspectives. Rania Abdulla, Gwendolyn Quinn, Clement Gwede, Jamila Ealey, Susan Vadaparampil, Ji-Hyun Lee, David Shibata, Gloria Elliott, Diana Lopez, Richard Roetzheim, Cathy Meade.

B92 Patient activation increases colorectal cancer screening rates among low-income minority patients. Mira L. Katz, Benjamin Broder-Oldach, James L. Fisher, Kelly Fleming, Electra D. Paskett.

B93 Colorectal cancer screening patterns among residents living in Ohio

Appalachia. Electra D. Paskett, Mira L. Katz, Gregory Young, David M. Murray, Chul-joo Lee, Michael Pennell, Cathy Tatum, Janice Krieger, Michael Slater.

B94 The effect of clinic on identifying predictors of HPV co-testing with Pap in routine cervical cancer screening. Darcy F. Phelan, John K. Boitnott, Douglas P. Clark, Lisa C. Dubay, Patti E. Gravitt.

B95 In four Midwest tribes there are few significant differences in the screening adherence of higher and lower risk women. Wesley O. Petersen, Ann M. Nicometo, Robert Vierkant, Marilyn Roubidoux, Steven Haugen, Judith S. Kaur.

B96 Trends in colorectal cancer screening with home-based fecal occult blood test (FOBT) in adults aged 50-64 years, 2000-2008. Priti Bandi, Vilma Cokkinides, Robert A. Smith, Ahmedin Jemal.

B97 Potential missed opportunities for early detection with screening mammography: Does the quality of radiologist's interpretation vary by patient socioeconomic advantage/disadvantage? Jenna A. Khan, Emily F. Conant, Garth H. Rauscher.

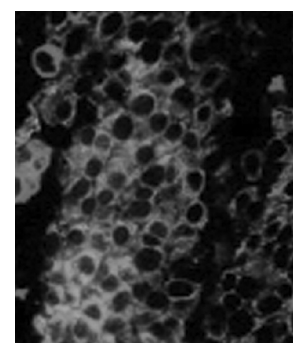
B99 Electronic prompting significantly increases hepatitis B screening in at-risk Asian populations. Leeyen Hsu, Christopher L. Bowlus, Susan Stewart, Tram Thanh Nguyen, Julie Dang, Moon S. Chen.

B100 Does patient navigation improve outcomes following a breast or colorectal screening abnormality? Outcomes of the Moffitt Cancer Center Patient Navigation Research Program. Kristen J. Wells, Mariana Arevalo, Ercilia R. Calcano, Ji-Hyun Lee, William J. Fulp, Cathy D. Meade, Richard G. Roetzheim.

[illegible]

Tuesday, September 20
9:45 a.m.-12:15 p.m.

B105 Potential barriers to mammography screening in Hispanic/Latino women living in the Northeast United States. Beth A. Jones, Margaret Doyle, Aracelis Torres, Inginia Genao, Stanislav V. Kasl, Hosanna Soler-Vila, Marcella Nunez Smith, Elizabeth B. Claus, Susan Nappi, Alejandra Miranda.

[illegible]

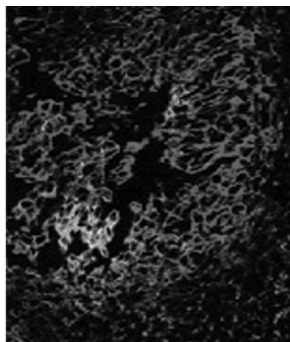


THE SCIENCE OF CANCER HEALTH DISPARITIES IN RACIAL/ETHNIC MINORITIES AND THE MEDICALLY UNDERSERVED

Tuesday, September 20
1:45 p.m.-2:45 p.m.

Constitution Ballrooms C/D/E

[illegible]



Plenary Session 5

Tuesday, September 20
2:45 p.m.-4:30 p.m.

Tobacco: Still the Dominant Global Health and Disparities Threat

Constitution Ballrooms C/D/E

Chairperson: Roy S. Herbst, Yale Comprehensive Cancer Center, New Haven, CT

Despite the clear evidence that tobacco use causes many types of cancer and myriad other diseases, tobacco use remains the world's leading cause of premature death. Sadly, the enormous burden of tobacco use disproportionately affects certain population groups. Disparities are apparent throughout the entire tobacco continuum from initiation of use and smoking behavior to efficacy of and access to cessation treatments and success in quitting to the resulting health consequences such as cancer. Understanding the role of tobacco use in cancer health disparities is critical to developing approaches that will help target vulnerable populations with more effective interventions.

An overview of the global tobacco epidemic [PL05-01]*

Michele Bloch, National Cancer Institute, Rockville, MD

Tobacco use and cancer disparities: An AACR perspective

Roy S. Herbst

Tobacco-related disparities and the Family Smoking Prevention and Tobacco Control Act [PL05-03]*

Cathy Backinger, U.S. Food and Drug Administration, Rockville, MD

Global tobacco inequalities: Role of communication, marketing, and promotion


K. Vish Viswanath, Dana-Farber Cancer Institute, Boston, MA

*An extended abstract for this presentation is available in the Invited Abstracts section of this book. (The abstract number is listed in brackets.)



Tuesday, September 20
4:45 p.m.-6:30 p.m.

Constitution Ballrooms C/D/E

[illegible]

Electra D. Paskett

Karen Freund, Boston University, Boston, MA

Steven R. Patierno, George Washington University, Washington, DC, and
Peter C. Raich, University of Colorado, Denver, CO

Kevin Fiscella, University of Rochester, Rochester, NY

Mark Bensink, Fred Hutchinson Cancer Research Center, Seattle, WA

Panel Discussion

*An extended abstract for this presentation is available in the Invited Abstracts section of this book. (The abstract number is listed in brackets.)



Plenary Session 7

Wednesday, September 21
8:00 a.m.-9:45 a.m.

Pharmacogenetics of Cancer Therapy: Challenges and Opportunities

Constitution Ballrooms C/D/E

Chairperson: Francis Ali-Osman, Duke University Comprehensive Cancer Center,
Durham, NC

Advances in pharmacogenetics, the science that defines the contributions of genetic variations in candidate genes, gene families, and gene networks to treatment outcome, have shown inherited genetic variability to be a significant determinant, not only of tumor response to therapy but also the nature and level of normal tissue toxicity associated with the therapy. This session will focus on recent advances, opportunities, and challenges in cancer pharmacogenetics as determinants of treatment outcome in cancer. Concepts will be presented, supported by data, on the use of candidate gene and whole genome strategies to identify gene variations that serve as markers of cancer treatment response and/or account for variability between individuals, ethnic groups, and populations in their responsiveness to anticancer drug therapy.

Linkage disequilibrium-based analysis of DNA repair and GST genes in malignant gliomas: A unique tool in defining the association between genetic diversity and survival [PL07-01]*

Francis Ali-Osman

Whole genome approaches to identify pharmacogenomic markers of anticancer agents [PL07-02]*

M. Eileen Dolan, University of Chicago, Chicago, IL

Ethnic differences and copy number imbalance in outcomes of early-stage breast cancer
Patricia Thompson, Arizona Cancer Center, Tucson, AZ

*An extended abstract for this presentation is available in the Invited Abstracts section of this book. (The abstract number is listed in brackets.)



Figure 1 displays a series of 12 grayscale images showing the development of a single cell into a multicellular embryo. The images are arranged in a 4x3 grid, with some cells missing. The images are numbered 2 through 19, with some numbers missing. The sequence shows the cell dividing and forming a multicellular structure.

**Wednesday,
September 21**



Plenary Session 8

Wednesday, September 21
11:00 a.m.-12:45 p.m.

Genomics and Epigenomics of Cancer Disparities

Constitution Ballrooms C/D/E

Chairperson: Steven R. Patierno, George Washington University, Washington, DC

Differential splicing of oncogenes and tumor suppressor genes between African and Caucasian Americans: Contributing factor in prostate cancer health disparities?
[PL08-01]*

Norman H. Lee, George Washington University Medical Center, Washington, DC

Fine mapping of genetic associations in African American colorectal cancer [PL08-02]*

Nathan A. Ellis, University of Illinois at Chicago, Chicago, IL

Disparities in vitamin D levels: Gene x environment interactions

Rick A. Kittles, University of Illinois at Chicago, Chicago, IL

Exome sequencing of head and neck squamous cell carcinoma reveals a higher frequency of mutations in TP53 among African Americans**

Rafael Guerrero-Preston, Johns Hopkins School of Medicine, Baltimore, MD

*An extended abstract for this presentation is available in the Invited Abstracts section of this book. (The abstract number is listed in brackets.)

**An extended abstract for this Proffered Talk is available on page 126.