

Conference Program and Schedule At-A-Glance

All sessions eligible for CME credit unless otherwise noted.

Sunday, November 7, 2010

10:00 a.m.-11:30 a.m. Educational Sessions 1-2

Metabolomics: An Emerging Tool for Defining Complex Biological Systems in Health

Chairperson: Steven S. Gross, Room 201C, p. 26

Trends in Molecular Epidemiology Research

Chairperson: Gloria M. Petersen, Room 201B, p. 26

11:30 a.m.-1:00 p.m. Professional Advancement Series Session*

Professional Advancement Series Session for Young Investigators

Chairperson: Margaret R. Spitz, Room 201A, p. 27

1:00 p.m.-2:30 p.m. Educational Sessions 3-4

Epigenetics

Chairperson: Ari M. Melnick, Room 201C, p. 28

Team Science and Transdisciplinary Approaches to Cancer Prevention Research Within and Across Institutions

Chairperson: Sarah Gehlert, Room 201B, p. 28

2:45 p.m.-4:15 p.m. Educational Sessions 5-6

Clinical Trial Novel Design: Retooling Drugs for Prevention

Chairperson: Andrea U. DeCensi, Room 201C, p. 29

The Indigenous Gut Microbiota in Colon Cancer

Chairperson: Vincent B. Young, Room 201B, p. 29

4:30 p.m.-5:15 p.m. Special Session

View from the NCI

Chairpersons: Peter Greenwald and Robert T. Croyle, Room 201A, p. 30

6:00 p.m.-7:30 p.m. Opening Plenary Session Ballroom A, p. 31

Welcome and Remarks

Margaret Foti and Eva Szabo

Keynote Address

Telomere biology and cancer

Elizabeth H. Blackburn

Distinguished Lecture on Targets for Cancer Prevention

Inflammation and cancer: Interweaving microRNA, innate immune, and p53 pathways

Curtis C. Harris

7:30 p.m.-9:00 p.m. Opening Reception Grand Hall

Monday, November 8, 2010

8:30 a.m.-10:00 a.m. Plenary Session 1

Personalized Prevention

Chairperson: Scott M. Lippman, Ballroom A, p. 32

10:15 a.m.-12:00 p.m. Concurrent Sessions 1-3

Infections

Chairperson: Douglas R. Lowy, Room 201C, p. 33

Recently Completed Developmental Clinical Trials in Chemoprevention

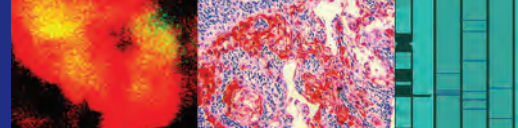
Chairperson: Howard H. Bailey, Room 201B, p. 33

Interventions to Reduce Cancer Health Disparities

Chairperson: Electra D. Paskett, Room 201A, p. 34

*not eligible for CME credit

Conference Program and Schedule At-A-Glance



All sessions eligible for CME credit unless otherwise noted.

1:15 p.m.-3:00 p.m. Concurrent Sessions 4-6

Molecular Targets for Cancer Prevention

Chairperson: Eva Szabo, Room 201C, p. 35

Prostate Cancer

Chairperson: Raymond C. Bergan, Room 201B, p. 35

Individualized Diet and Cancer Prevention

Chairperson: Johanna W. Lampe, Room 201A, p. 36

3:15 p.m.-5:15 p.m. Plenary Session 2

New Approaches to Identifying High-Risk Populations

Chairperson: Avrum E. Spira, Ballroom A, p. 37

5:15 p.m.-6:15 p.m. AACR-Prevent Cancer Foundation Award Lecture

Validating Biomarkers to Probe the Etiology and Prevention of Hepatocellular Carcinoma

John D. Groopman, Ballroom A, p. 38

6:00 p.m.-7:30 p.m. Behavioral Science in Cancer Research Networking Event*

Chairperson: Michael E. Stefanek, Room 204A, p. 19

6:15 p.m.-8:45 p.m. Poster Session A* Ballroom B, p. 39

Carcinogenesis

Carcinogen Activation and Carcinogen-detoxifying Enzymes
DNA Damage and Repair Mechanisms
Environmental and Radiation Carcinogenesis
Tumor Promotion and Progression

Cell, Molecular, and Tumor Biology

Angiogenesis and Invasion
Autophagy
Cancer Genetics/Gene Expression
Cell Death
Cell Growth Signaling Pathways

DNA Methylation/Epigenetics and Chromatin Regulation
Gene Regulation and Transcriptional Control
Inflammation and Cancer Initiation and Promotion
Oncogenes/Tumor Suppressor Genes
Other

Chemoprevention and Biological Therapies

Cancer Prevention Vaccines
Mechanisms of Chemoprevention
Natural Product-based Agents
New Molecular Targets/Mechanisms of Drug Action
Nuclear Receptors
Proteomics, Chemogenomics, and Chemoinformatics
Other

Clinical Prevention Trials (by Organ Site)

Breast Cancer
Colon and Other Gastrointestinal Cancers
Lung Cancer
Melanoma and Skin Cancer
Pancreatic Cancer
Prostate and Other Genitourinary Tract Cancers
Trials in Progress: Clinical Intervention Trials

Epidemiology/Lifestyle Factors

Behavioral Epidemiology
Cancer in Aging Populations
Cancer in Minority and Medically Underserved Populations
Diet and Cancer

Preclinical and Translational Prevention Studies (by Organ Site)

Breast Cancer
Colon and Other Gastrointestinal Cancers
Head and Neck Cancers
Lung Cancer
Ovarian and Other Gynecological Cancers
Prostate and Other Genitourinary Tract Cancers
Other Organ Sites

Biomarkers and Early Detection Research

Biomarkers of Cancer Susceptibility/Biomarkers of
Premalignant Lesions

*not eligible for CME credit

Conference Program and Schedule At-A-Glance

All sessions eligible for CME credit unless otherwise noted.

Tuesday, November 9, 2010

7:00 a.m.-8:00 a.m. Special Session

Report on AACR-NCI Think Tank: Charting the Future of Cancer Prevention

Chairperson: Raymond N. DuBois, Ballroom A, p. 46

8:00 a.m.-10:00 a.m. Plenary Session 3

Bioenergetics and Cancer

Chairpersons: John A. Milner and Sharon Ross, Ballroom A, p. 47

10:15 a.m.-12:00 p.m. Concurrent Sessions 7 and 9

Lung Cancer Prevention

Chairperson: Jenny T. Mao, Room 201C, p. 48

Molecular Approaches to Early Detection

Chairperson: Samir M. Hanash, Room 201A, p. 50

10:15 a.m.-12:15 p.m. Concurrent Session 8

The Karen A. Johnson Memorial Session Novel Targets and Strategies for Breast Cancer Prevention

Chairperson: Powel H. Brown, Room 201B, p. 48

1:15 p.m.-3:00 p.m. Concurrent Sessions 10-12

The Microenvironment

Chairperson: Thea D. Tlsty, Room 201C, p. 51

Advances in the Genetics, Screening, and Prevention of Cancers in Cancer Susceptibility Syndromes

Chairperson: Katherine L. Nathanson, Room 201B, p. 51

Inflammation and Cancer Prevention

Chairperson: Andrew J. Dannenberg, Room 201A, p. 52

3:15 p.m.-5:15 p.m. Plenary Session 4

Understanding Neoplastic Progression: Questions and Controversies

Chairperson: Carlo C. Maley, Ballroom A, p. 53

5:15 p.m.-7:45 p.m. Poster Session B* Ballroom B, p. 54

Behavioral and Social Science

- Decision Making
- Diet, Physical Activity, and Energy Balance
- Genetic Testing and Counseling
- Health Disparities
- Prevention Behaviors
- Quality of Life/Late Effects/Survivorship
- Recruitment/Retention/Adherence Research
- Screening and Early Detection
- Socioeconomic Influences
- Tobacco

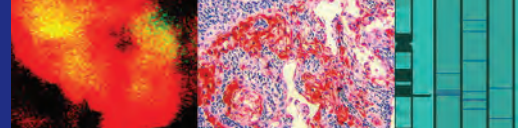
Biomarkers and Early Detection Research

- Bioinformatics and "Omics"
- Biomarkers of Cancer Susceptibility
- Biomarkers of Carcinogen Exposure
- Biomarkers of Premalignant Lesions
- Cancer Surveillance and Screening
- Molecular Diagnostics
- Novel Assay Technologies
- Other



*not eligible for CME credit

Conference Program and Schedule At-A-Glance



All sessions eligible for CME credit unless otherwise noted.

Chemoprevention and Biological Therapies

- Anti-inflammatory Therapy
- Biological Agents
- Combination Chemoprevention
- Drug Design and Optimization
- Foods and Their Bioactive Components

Epidemiology/Lifestyle Factors

- Exercise and Prevention
- Familial and Genetic Epidemiology
- General Epidemiology and Biostatistics
- Obesity, Metabolism, and Cancer
- Tobacco and Cancer
- Other Molecular Epidemiology
- Other Risk Factors
- Other

7:30 p.m.-9:00 p.m. MEG Town Meeting and Reception*

Launching and Sustaining Collaborative Molecular Epidemiology Research

Moderator: Sophia S. Wang

Panel discussion and networking, Room 204C, p. 60

Wednesday, November 10, 2010

8:00 a.m.-10:00 a.m. Plenary Session 5

Bringing Prevention and Early Detection to the Public: A Global Perspective

Chairperson: Michael J. Thun, Ballroom A, p. 61

10:15 a.m.-12:00 p.m. Concurrent Sessions 13-15

Molecularly Based Approaches to Colorectal Cancer Prevention

Chairperson: Paul J. Limburg, Room 201C, p. 62

Head and Neck Cancer Prevention

Chairperson: Mary E. Reid, Room 201B, p. 62

Communicating Cancer Risks: High-Risk Populations, the Public, and Physician Communication

Chairperson: Mary B. Daly, Room 201A, p. 63



*not eligible for CME credit