

AACR Virtual Special Conference

The Evolving Tumor Microenvironment in Cancer Progression

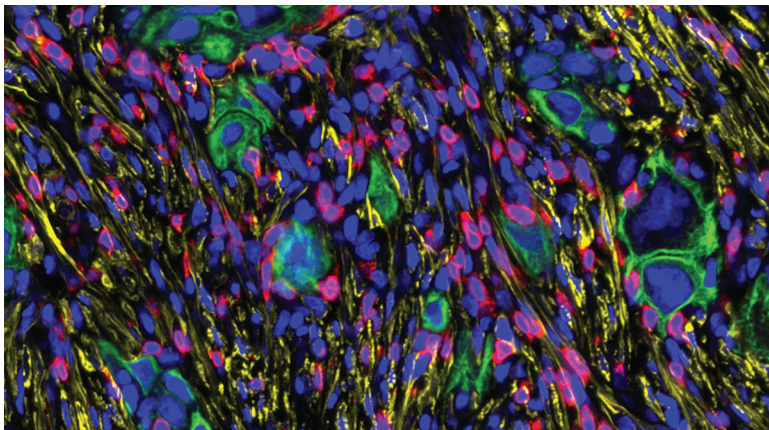
January 11-12, 2021

DISCLOSURE OF FINANCIAL RELATIONSHIPS

In compliance with the standards set by the Accreditation Council for Continuing Medical Education (ACCME), it is the policy of the American Association for Cancer Research (AACR) that the information presented at CME activities will be unbiased and based on scientific evidence. To help participants make judgments about the presence of bias, the AACR has provided information that planning committee members, speakers, and abstract presenters have disclosed about financial relationships they have with commercial entities that produce or market products or services related to the content of this CME activity.

Relationships are abbreviated as follows: E, Employee of listed company, G, Grant/research support recipient, A, Advisor or review panel member, C, Consultant, S, Stock Shareholder, SB, Speakers' Bureau, H, Honoraria, O, Other.

| Last Name | First Name | Company | Relationships | Type | Role |
|------------------|------------|--|---|-----------|---------|
| Aguirre-Ghiso | Julio | Icahn School of Medicine at Mount Sinai | HiberCell LLC | A,C,G,H,S | Speaker |
| Arthur | Ronald | American Association for Cancer Research | No Relationships | | Staff |
| Bergom | Carmon | Medical College of Wisconsin | No Relationships | | Speaker |
| Campisi | Judy | Buck Institute for Research on Aging | No Relationships | | Speaker |
| Comba | Andrea | University of Michigan Medical School | No Relationships | | Speaker |
| Croucher | Peter | Garvin Institute of Medical Research | Amgen | G,SB | Speaker |
| de Keizer | Peter | University Medical Center Utrecht | Cleara Biotech | E,O | Speaker |
| Demaria | Marco | ERIBA, University Medical Center Groningen | No Relationships | | Speaker |
| DeNardo | David | Washington University School of Medicine | No Relationships | | Speaker |
| DuPage | Michel | University of California at Berkeley | No Relationships | | Speaker |
| Egeblad | Mikala | Cold Spring Harbor Laboratory | MPM Gilead; CytomX; Blackstone Life Sciences Fund; Agios Pharmaceutical | C,H,S,O | Speaker |
| Feldmann | Karin | Technical University of Munich | No Relationships | | Speaker |
| Fischbach-Teschl | Claudia | Cornell University | No Relationships | | Speaker |



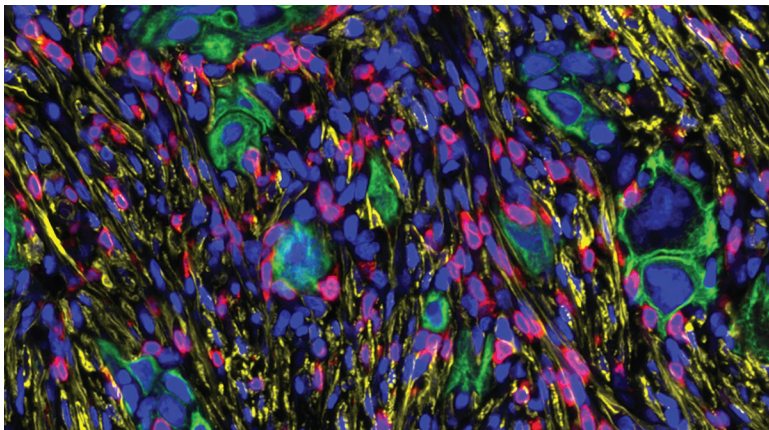
AACR Virtual Special Conference

The Evolving Tumor Microenvironment in Cancer Progression

January 11-12, 2021

DISCLOSURE OF FINANCIAL RELATIONSHIPS

| Last Name | First Name | Company | Relationships | Type | Role |
|------------|------------|---|--|---------|----------------------------|
| Formenti | Silvia | Weill Cornell Medicine | BMS, Varian, Merck, Eisai, Eli Lilly, Janssen, Regeneron, Accuray, AZ, Bayer, Eleka, EMD Serono/Merck, GSK, MedImmune, Viewray, Pfizer | G,H,O | Speaker |
| Ghajar | Cyrus | Fred Hutchinson Cancer Research Center | No Relationships | | Speaker |
| Han | Lu | Medical University of South Carolina | No Relationships | | Speaker |
| James | Ashley | American Association for Cancer Research | No Relationships | | Staff |
| Kang | Yibin | Princeton University | Firebrand Therapeutics, Kayothera, Amgen, Glycomimetics, Cytocares, FrontAim | A,G,H,S | Program Committee, Speaker |
| Kaplan | Rosandra | National Cancer Institute Center for Cancer Research | No Relationships | | Speaker |
| Krummel | Matthew | University of California, San Francisco | No Relationships | | Speaker |
| Lefler | Julia | Medical University of South Carolina | No Relationships | | Speaker |
| Li | Jinyang | University of Pennsylvania | No Relationships | | Speaker |
| Longmore | Greg | Washington University School of Medicine | Pfizer | G | Speaker |
| Lyden | David | Weill Cornell Medicine | No Relationships | | Speaker |
| Massagué | Joan | Memorial Sloan Kettering Cancer Center | Scholar Rock | S | Speaker |
| McAllister | Sandra | Brigham and Woman's Hospital | No Relationships | | Speaker |
| Minn | Andy | Abramson Family Cancer Research Institute, University of Pennsylvania | Takeda, H3Biomedicine, Merck | A,G | Speaker |
| Nelson | Celeste | Princeton University | No Relationships | | Speaker |
| Pollard | Jeffrey | University of Edinburgh | Macomics | A | Speaker |
| Polyak | Kornelia | Dana-Farber Cancer Institute | Acrivon Therapeutics, Scorpion Therapeutics, twoAXR | A,C | Speaker |



AACR Virtual Special Conference

The Evolving Tumor Microenvironment in Cancer Progression

January 11-12, 2021

DISCLOSURE OF FINANCIAL RELATIONSHIPS

| Last Name | First Name | Company | Relationships | Type | Role |
|----------------|------------|---|----------------------|------|----------------------------|
| Quail | Daniela | McGill University | No Relationships | | Speaker |
| Raghavan | Kristopher | Fox Chase Cancer Center | No Relationships | | Speaker |
| Reavis | Hunter | University of Pennsylvania | No Relationships | | Speaker |
| Reticker-Flynn | Nathan | Stanford University | No Relationships | | Speaker |
| Stewart | Sheila | Washington University in St. Louis | Aclaris Therapeutics | G | Program Committee, Speaker |
| Wang | Emily | University of California at San Diego | No Relationships | | Speaker |
| Weaver | Valerie | University of California, San Francisco | No Relationships | | Program Committee |
| Weeraratna | Ashani | Johns Hopkins Bloomberg School of Public Health | No Relationships | | Speaker |