

Conference Cochairs:

Dafna Bar-Sagi, New York University Langone Medical Center, New York, NY

Elizabeth M. Jaffee, Johns Hopkins Sidney Kimmel Comprehensive Cancer Center, Baltimore, MD

Ben Z. Stanger, Abramson Cancer Center of the University of Pennsylvania, Philadelphia, PA

Brian M. Wolpin, Dana-Farber Cancer Institute, Boston, MA

TUESDAY, SEPTEMBER 29

9:30 a.m.-10:10 a.m. Opening Session

9:30 a.m.-9:35 a.m.

Welcome from Cochairs

Dafna Bar-Sagi, New York University Langone Medical Center, New York, NY

Brian M. Wolpin, Dana-Farber Cancer Institute, Boston, MA

9:35 a.m.-9:45 a.m.

Welcome from Lead Supporters

Kerri Kaplan, Lustgarten Foundation, Woodbury, NY

Julie M. Fleshman, Pancreatic Cancer Action Network, Manhattan Beach, CA

9:45 a.m.-10:10 a.m.

Rising Star Keynote

Role of the gut-tumor microbial axis in pancreatic ductal adenocarcinoma (PDAC)

Florencia McAllister, UT MD Anderson Cancer Center, Houston, TX

10:10 a.m.-10:25 a.m. BREAK

10:25 a.m.-11:45 a.m. Plenary Session 1 TME and Metastasis

Session Chair: Ben Z. Stanger, Abramson Cancer Center of the University of Pennsylvania, Philadelphia, PA

10:25 a.m.-10:45 a.m.

Pancreatic cancer heterogeneity and plasticity: The mix of seed and soil

David T. Ting, Massachusetts General Hospital Cancer Center, Charlestown, MA

10:45 a.m.-11:05 a.m.

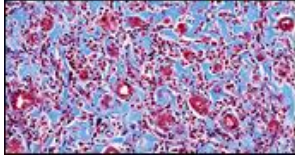
ECM-dependent CAF functions in pancreatic cancer nutritional support and immunosuppression

Edna Cukierman, Fox Chase Cancer Center, Philadelphia, PA

11:05 a.m.-11:25 a.m.

Pancreatic cancer cells assemble a CXCL12-keratin 19 coating to resist immunotherapy

Douglas T. Fearon, Cold Spring Harbor Laboratory, Cold Spring Harbor, NY



11:25 a.m.-11:45 a.m. **Immune health and intratumoral immune heterogeneity: Barriers to the efficacy of immunotherapy in pancreatic cancer**

Gregory L. Beatty, University of Pennsylvania, Philadelphia, PA

11:45 a.m.-12:15 p.m. BREAK

12:15 p.m.-1:35 p.m. Plenary Session 2 Emerging Research Areas and Clinical Advances

Session Chair: Jennifer J. Knox, Princess Margaret Cancer Centre, Toronto, Canada

12:15 p.m.-12:35 p.m. **Heterotypic 3D bioprinted models to study pancreatic cancer**

Ellen M. Langer, Oregon Health & Science University, Portland, OR

12:35 p.m.-12:55 p.m. **Mechanisms of cellular heterogeneity in pancreatic cancer**

Axel Behrens, Francis Crick Institute, London, United Kingdom

12:55 p.m.-1:15 p.m. **Clinical advances in pancreatic adenocarcinoma**

Jennifer J. Knox, Princess Margaret Cancer Centre, Toronto, Canada

1:15 p.m.-1:35 p.m. **The end of perpetual chemotherapy?**

Kim A. Reiss, University of Pennsylvania, Philadelphia, PA

1:35 p.m.-2:30 p.m. BREAK

2:30 p.m.-4:00p.m. Abstract Discussion Session 1

Session Chair: Dafna Bar-Sagi, New York University Langone Medical Center, New York, NY

2:30 p.m.-2:45 p.m. **Neoadjuvant therapy is associated with altered composition of immune cell infiltration and an anti-tumorigenic microenvironment in resected pancreatic cancer**

Andressa Dias Costa, Dana-Farber Cancer Institute, Boston, MA

2:45 p.m.-3:00 p.m. **Stromal phenotypic heterogeneity fosters pancreatic cancer progression**

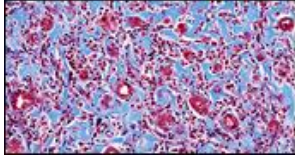
Barbara T. Grünwald, Princess Margaret Cancer Centre, University of Toronto, Toronto, Canada

3:00 p.m.-3:15 p.m. **Tumor-cell-intrinsic epigenetic factors underlie the heterogeneity of immune infiltration and response to immunotherapy in pancreatic cancer**

Jinyang Li, University of Pennsylvania, Philadelphia, PA

3:15 p.m.-3:30 p.m. **Systemic and intratumoral immune profiling in metastatic pancreatic cancer patients who received front-line FOLFIRINOX and were treated with combination immunotherapy with CTLA-4 blockade in the maintenance setting**

Annie Wu, Johns Hopkins University School of Medicine, Baltimore, MD



3:30 p.m.-3:45 p.m. **Tumor intrinsic p53 mutation drives accumulation of neutrophils in the pancreatic tumor microenvironment promoting resistance to immunotherapy**
Despina Siolas, New York University Langone Medical Center, New York, NY

3:45p.m.-4:00 p.m. **Moderated Discussion**
Discussants:
Marina Pasca Di Magliano, University of Michigan, Ann Arbor, MI
Kenneth P. Olive, Herbert Irving Comprehensive Cancer Center, New York, NY

4:00 p.m.-4:30 p.m. BREAK

4:30 p.m.-5:00 p.m. Keynote Lecture 1

4:30 p.m.-4:30 p.m. Introduction
Dafna Bar-Sagi, New York University Langone Medical Center, New York, NY

4:30 p.m.-5:00 p.m. **Overcoming the Seven Deadly Hallmarks of Pancreatic Cancer**
David Tuveson, Cold Spring Harbor Laboratory, Cold Spring Harbor, NY

WEDNESDAY, SEPTEMBER 30

10:00 a.m.-11:20 a.m. Plenary Session 3 Precision Medicine and Early Detection

Session Chair: Andrew V. Biankin, Wolfson Wohl Cancer Research Centre, University of Glasgow, Glasgow, United Kingdom

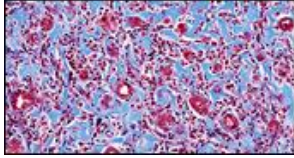
10:00 a.m.-10:20 a.m. **An exception to the rule - a coding functional variant at a pancreatic cancer GWAS locus**
Laufey T. Amundadottir, National Cancer Institute, Bethesda, MD

10:20 a.m.-10:40 a.m. **Precision oncology for pancreatic cancer**
Andrew V. Biankin, Wolfson Wohl Cancer Research Centre, University of Glasgow, Glasgow, United Kingdom

10:40 a.m.-11:00 a.m. **Molecularly targeted imaging and treatment via the integrin $\alpha\beta6$**
Julie L. Sutcliffe, University of California Davis, Sacramento, CA

11:00 a.m.-11:20 a.m. **Understanding inherited risk for pancreatic cancer**
Alison P. Klein, Johns Hopkins School of Medicine, Baltimore, MD

11:20 a.m.-11:50 a.m. BREAK



11:50 a.m.-1:10 p.m. Plenary Session 4 Metabolism and Homeostasis

Session Chair: Howard Crawford, University of Michigan, Ann Arbor, MI

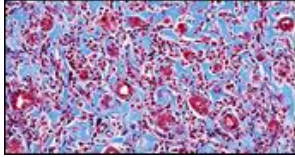
- 11:50 a.m.-12:10 p.m. **Metabolic networks in the tumor microenvironment**
Costas A. Lyssiotis, University of Michigan, Ann Arbor, MI
- 12:10 p.m.-12:30 p.m. **Metabolic adaptations in pancreatic cancer**
Kathryn E. Wellen, University of Pennsylvania School of Medicine,
Philadelphia, PA
- 12:30 p.m.-12:50 p.m. **Mechanisms of pancreatic cancer-induced cachexia**
Denis C. Guttridge, Medical University of South Carolina, Charleston, SC
- 12:50 p.m.-1:10 p.m. **Epithelial cell plasticity in pancreatic cancer: The function and fate of metaplastic tuft cells**
Howard C. Crawford, University of Michigan, Ann Arbor, MI

1:10 p.m.-2:30 p.m. BREAK

2:30 p.m.-4:00 p.m. Abstract Discussion Session 2

Session Chair: Elizabeth M. Jaffee, Johns Hopkins Sidney Kimmel Comprehensive Cancer Center, Baltimore, MD

- 2:30 p.m.-2:45 p.m. **Spatially resolved, single cell assessment of pancreatic ductal adenocarcinoma expression subtypes reveals mixed and hybrid basal-classical marker expression with prognostic significance and discrete spatial localization**
Hannah Williams, Dana-Farber Cancer Institute, Boston, MA
- 2:45 p.m.-3:00 p.m. **Single-nucleus and spatial transcriptomics of archival pancreatic ductal adenocarcinoma reveals multi-compartment reprogramming after neoadjuvant treatment**
William L. Hwang, Massachusetts General Hospital, Boston, MA
- 3:00 p.m.-3:15 p.m. **The role of PP2A-B56 α in acinar-to-ductal metaplasia and initiation of Pancreatic Ductal Adenocarcinoma**
Samantha L. Tinsley, Purdue University Center for Cancer Research,
West Lafayette, IN
- 3:15 p.m.-3:30 p.m. **Proteotranscriptomic classification and characterization of pancreatic neuroendocrine neoplasms**
Kevin Yang, BC Cancer, Vancouver, Canada
- 3:30 p.m.-3:45 p.m. **Blinded and Meta-Analysis Validation of an Improved Serological Test for PDAC Using the Combination of CA19-9 and the sTRA Glycan**



Ying Liu, Van Andel Institute, Grand Rapids, MI

3:45p.m.-4:00 p.m.

Moderated Discussion

Discussants:

Cristina Ferrone, Massachusetts General Hospital, Boston, MA

Sunil R. Hingorani, Fred Hutchinson Cancer Research Center,
Seattle, WA

Anirban Maitra, UT MD Anderson Cancer Center, Houston, TX

4:00 p.m.-4:15 p.m. BREAK

4:15 p.m.-5:15 p.m. Closing Keynote & Remarks

4:15 p.m.-4:15 p.m.

Introduction

Elizabeth M. Jaffee, Johns Hopkins Sidney Kimmel Comprehensive
Cancer Center, Baltimore, MD

4:15 p.m.-5:05 p.m.

Team Science Keynotes

**Dissecting the immune complexity of pancreatic cancer survivors
through team science**

Vinod P. Balachandran, Memorial Sloan Kettering Cancer Center, New
York, NY

**Team science: Lessons from a few decades on the pancreatic cancer
research team**

Steven D. Leach, Norris Cotton Cancer Center, Lebanon, NH

5:05 p.m.-5:15 p.m.

Closing Remarks

Elizabeth M. Jaffee, Johns Hopkins Sidney Kimmel Comprehensive
Cancer Center, Baltimore, MD

Ben Z. Stanger, Abramson Cancer Center of the University of
Pennsylvania, Philadelphia, PA