

Organizing Committee Cochairs:

Antoni Ribas, University of California Los Angeles (UCLA), Jonsson Comprehensive Cancer Center (JCCC), Los Angeles, CA¹

James H. Doroshow, National Cancer Institute, Bethesda, MD¹

Denis A. Lacombe, European Organisation for Research and Treatment of Cancer, Brussels, Belgium¹

Scientific Committee Cochairs:

Lillian L. Siu, Princess Margaret Cancer Centre, Toronto, ON, Canada¹

James L. Gulley, National Cancer Institute, Bethesda, MD¹

Ruth Plummer, Northern Centre for Cancer Care, Newcastle upon Tyne, United Kingdom¹

Scientific Committee Members:

AACR:

Prasad S. Adusumilli, Memorial Sloan Kettering Cancer Center, New York, NY

Nilofer S. Azad, Johns Hopkins University, Baltimore, MD

John C. Byrd, University of Cincinnati, Cincinnati, OH

Jayesh Desai, Peter MacCallum Cancer Centre, Melbourne, Australia

Maximilian Diehn, Stanford University, Stanford, CA

Jeffrey A. Engelman, Treeline Biosciences, Watertown, MA

Susan M. Galbraith, AstraZeneca, Cambridge, England¹

Benjamin Haibe-Kains, UHN Princess Margaret Cancer Centre, Toronto, ON, Canada

Jonathan Hirsch, Syapse, Palo Alto, CA

David M. Hyman, Loxo Oncology at Lilly, Stamford, CT

Nada Jabado, McGill University, Montréal, QC, Canada

Pasi A. Jänne, Dana-Farber Cancer Institute, Boston, MA¹

Marina Y. Konopleva, The University of Texas MD Anderson Cancer Center, Houston, TX

Brigitte B. Ma, Chinese University of Hong Kong, Hong Kong

Zoran Rankovic, St. Jude Children's Research Hospital, Memphis, TN

Antoni Ribas, University of California Los Angeles (UCLA), Jonsson Comprehensive Cancer Center (JCCC), Los Angeles, CA

William R. Sellers, Broad Institute, Cambridge, MA

Alexandra Snyder Charen, Merck & Co., Inc., Rahway, NJ

NCI:

Alice P. Chen, National Cancer Institute, Bethesda, MD

Peter L. Choyke, National Cancer Institute, Bethesda, MD

James H. Doroshow, National Cancer Institute, Bethesda, MD

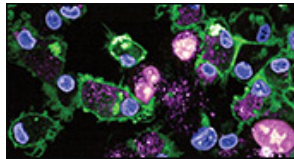
Marc S. Ernstoff, National Cancer Institute, Bethesda, MD

William D. Figg, National Cancer Institute, Bethesda, MD

Lyndsay N. Harris, National Cancer Institute, Rockville, MD

Toby T. Hecht, National Cancer Institute, Rockville, MD

S. Percy Ivy, National Cancer Institute, Bethesda, MD



Stanley Lipkowitz, National Cancer Institute, Bethesda, MD¹
Jeffrey A. Moscow, National Cancer Institute, Bethesda, MD
Barry R. O'Keefe, National Cancer Institute, Frederick, MD
Eytan Ruppin, National Cancer Institute, Bethesda, MD
Beverly A. Teicher, National Cancer Institute, Bethesda, MD¹
Carole J. Thiele, National Cancer Institute, Bethesda, MD
John J. Wright, National Cancer Institute, Rockville, MD

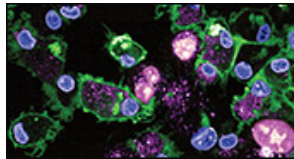
EORTC:

Dereck D. Amakye, Bayer HealthCare, Leverkusen, Germany
Ahmad Awada, Institut Jules Bordet, Brussels, Belgium
Jan Bussink, Radboud University Medical Center, Nijmegen, Netherlands
George Coukos, UNIL University of Lausanne, Lausanne, Switzerland
Kapil Dhingra, KAPital Consulting LLC, Sparta, NJ¹
Elena Garralda, Vall D'Hebron Institute of Oncology, Barcelona, Spain¹
Ioannis Gounaris, Merck-Serono Ltd., Feltham, United Kingdom
Viktor Grünwald, Hannover Medical School, Hannover, Germany
Egesta Lopci, Istituto Clinico Humanitas, Milan, Italy
Christophe Massard, Princess Máxima Center for Pediatric Oncology, Villejuif, France
Eric Raymond, Paris Saint-Joseph Hospital, Paris, France
Jean-Charles Soria, Institut Gustave Roussy, Villejuif, France
Stefan N. Symeonides, University of Edinburgh, Edinburgh, Scotland
Jaap Verweij, Cancer Drug Development Forum, Brussels, Belgium
Mike Waring, Northern Institute for Cancer Research, Newcastle upon Tyne, England

¹ - *Executive Committee Member*

* - *short-talk from highly rated proffered paper*

Poster Sessions will be available on-demand throughout the entire meeting, releasing at 9:00 am ET on Day 1, except those in the press program.



THURSDAY, OCTOBER 7

Poster Session

9:00 am (on-demand throughout conference)

Educational Sessions

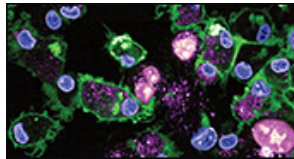
10:00 am-11:20 am

ED01: Exploiting Synthetic Lethality

Session Cochairs: Eytan Ruppin, National Cancer Institute, Bethesda, MD, and Barbara Weber, Tango Therapeutics, Boston, MA

Channel A

- | | |
|-------------|--|
| 10:00-10:05 | Introduction
Barbara Weber, Tango Therapeutics, Boston, MA |
| 10:05-10:25 | Uncovering the principles that govern synthetic lethality in cancer
Christopher Lord, The Institute of Cancer Research, London, England |
| 10:25-10:35 | Q&A / Discussion |
| 10:35-10:55 | Synthetic lethality in microsatellite unstable cancers
André Nussenzweig, National Cancer Institute, Bethesda, MD |
| 10:55-11:05 | Q&A / Discussion |
| 11:05-11:20 | Panel Discussion |



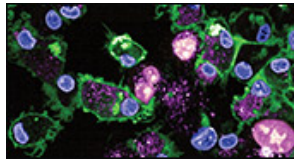
ED02: Novel Clinical Trial Designs and Development of Next-gen Investigators for Complex Anticancer Agents

Session Cochairs: Philippe L. Bedard, UHN Toronto General Hospital, Toronto, ON, Canada, and Laura J. Esserman, UCSF Helen Diller Family Comprehensive Cancer Center, San Francisco, CA
Channel B

- 10:00-10:05 Introduction
Philippe L. Bedard, UHN Toronto General Hospital, Toronto, ON, Canada
- 10:05-10:23 Early phase trials to establish proof of concept for adoptive cellular therapy for solid tumors
Prasad S. Adusumilli, Memorial Sloan Kettering Cancer Center, New York, NY
- 10:23-10:41 Response adaptive randomization to prioritize promising investigational agents: I-SPY2
Laura J. Esserman, UCSF Helen Diller Family Comprehensive Cancer Center, San Francisco, CA
- 10:41-10:59 Real-world evidence to inform regulatory approval
Laleh Amiri-Kordestani, U.S. Food and Drug Administration, Silver Spring, MD
- 10:59-11:20 Panel Discussion
Prasad S. Adusumilli
Laleh Amiri-Kordestani
Philippe L. Bedard
Jacqueline Corrigan-Curay, U.S. Food and Drug Administration, Silver Spring, MD
Laura J. Esserman

Break

11:20 am-11:35 am



Welcome and Opening Keynote Address

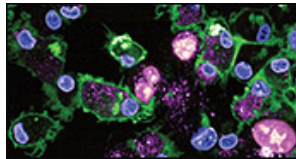
11:35 am-12:35 pm

Channel A

- 11:35-11:45 Welcome from Scientific Committee Cochairs
Lillian L. Siu, Princess Margaret Cancer Centre, Toronto, ON, Canada
James L. Gulley, National Cancer Institute, Bethesda, MD
Ruth Plummer, Northern Centre for Cancer Care, Newcastle upon Tyne, United Kingdom
- 11:45-11:50 Introduction of Keynote Speaker
Ruth Plummer, Northern Centre for Cancer Care, Newcastle upon Tyne, United Kingdom
- 11:50-12:20 Lung cancer progression and detection: From aberrant basal cell to CT and blood screening
Samuel Janes, University College London, London, England
- 12:20-12:35 Q&A / Discussion

Break

12:35 pm-12:50 pm



Plenary Session 1: Tumor-targeted Conjugates: A Growing Family

12:50 pm-2:40 pm

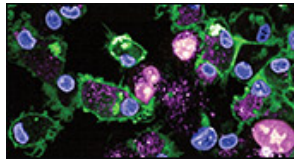
Session Cochairs: Puja Sapra, AstraZeneca, Gaithersburg, MD, and Stefan N. Symeonides, University of Edinburgh, Edinburgh, Scotland

Channel A

- | | |
|-------------|--|
| 12:50-12:55 | Introduction
Stefan N. Symeonides, University of Edinburgh, Edinburgh, Scotland |
| 12:55-13:15 | Antibody drug conjugates: Advances, challenges, and future
Puja Sapra, AstraZeneca, Gaithersburg, MD |
| 13:15-13:25 | Q&A / Discussion |
| 13:25-13:45 | A first in class phase I/II study of the novel bicyclic peptide and MMAE conjugate, BT5528, in patients with advanced malignancies associated with EphA2 expression
Meredith McKean, Sarah Cannon Research Institute, Nashville, TN |
| 13:45-13:55 | Q&A / Discussion |
| 13:55-14:15 | XMT-2056: Tumor-targeted innate immune activation via a STING-agonist antibody drug conjugate
Timothy B. Lowinger, Mersana Therapeutics, Cambridge, MA |
| 14:15-14:25 | Q&A / Discussion |
| 14:25-14:40 | Panel Discussion |

Break

2:40 pm-2:55 pm



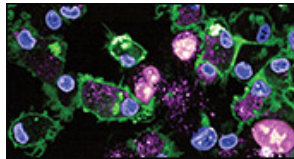
Concurrent Sessions 1-3

2:55 pm-4:30 pm

CC01: Clinical Utility and Applications of New Computational Technologies

Session Cochairs: Benjamin Haibe-Kains, UHN Princess Margaret Cancer Centre, Toronto, ON, Canada, and Kenna R. Mills Shaw, The University of Texas MD Anderson Cancer Center, Houston, TX Channel A

- 14:55-15:00 Introduction
Kenna R. Mills Shaw, The University of Texas MD Anderson Cancer Center, Houston, TX
- 15:00-15:18 An ML system for radiation therapy from lab to lives
Chris McIntosh, University of Toronto, Toronto, ON, Canada
- 15:18-15:36 Computational approaches to microsatellite instability analysis and TMB characterization
Elaine R. Mardis, Children's Nationwide Hospital, Columbus, OH
- 15:36-15:54 Predicting outcomes of Phase III oncology trials with Bayesian mediation modeling
Brian P. Hobbs, The University of Texas at Austin, Austin, TX
- 15:54-16:02 The landscape of precision cancer combination therapy: A single-cell perspective*
Rahulsimham Vegesna, National Cancer Institute, Bethesda, MD
- 16:02-16:10 Novel algorithm discovers up to 70% more epitopes translated from non-coding regions in cold tumours *
Cedric Bogaert, myNEO, Ghent, Belgium
- 16:10-16:30 Panel Discussion

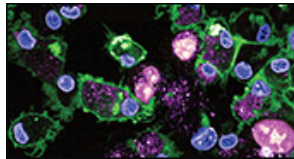


CC02: Drugs Targeting Metabolism

Session Cochairs: Stanley Lipkowitz, National Cancer Institute, Bethesda, MD, and Jean-Emmanuel Sarry, INSERM Cancer Research Center, Toulouse, France

Channel B

- 14:55-15:00 Introduction
Stanley Lipkowitz, National Cancer Institute, Bethesda, MD
- 15:00-15:20 Mitochondrial determinants of response and resistance to therapies in acute myeloid leukemia
Jean-Emmanuel Sarry, INSERM Cancer Research Center, Toulouse, France
- 15:20-15:30 Q&A / Discussion
- 15:30-15:50 Mitochondrial matrix Protease ClpP agonists suppress breast cancer stem cell function by downregulating multiple stem cell regulatory mechanisms
Yoshimi E. Greer, National Cancer Institute, Bethesda, MD
- 15:50-16:00 Q&A / Discussion
- 16:00-16:10 Regulation of FASN expression through a novel IGF-1R-mTORC1-SRPK2-SRSF1 pathway*
Bryan McClellan, University of Texas, Austin, TX
- 16:10-16:15 Q&A / Discussion
- 16:15-16:30 Panel Discussion



CC03: Extracellular Vesicles as Therapeutic Targets

Session Cochairs: Toby T. Hecht, National Cancer Institute, Rockville, MD, and Jennifer C. Jones, National Cancer Institute, Bethesda, MD

Channel C

- 14:55-15:00 Introduction
Toby T. Hecht, National Cancer Institute, Rockville, MD
- 15:00-15:20 Mechanisms of exosome driven immunoregulation of cancer progression
Robert H. Blelloch, University of California, San Francisco, CA
- 15:20-15:30 Q&A / Discussion
- 15:30-15:50 Tumor derived exosomes: Their role in immune regulation and as biomarkers of cancer progression
Theresa L. Whiteside, University of Pittsburgh Cancer Institute, Pittsburgh, PA
- 15:50-16:00 Q&A / Discussion
- 16:00-16:10 Exosome pathway inhibition as therapeutic strategy in colorectal cancer*
Madalena N. Monteiro, VU University Medical Center, Amsterdam, Netherlands
- 16:10-16:15 Q&A / Discussion
- 16:15-16:30 Panel Discussion

Break

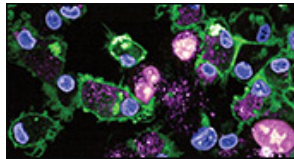
4:30 pm-4:45 pm

Keynote Address

4:45 pm-5:35 pm

Channel A

- 16:45-16:50 Introduction of Keynote Speaker
Lillian L. Siu, Princess Margaret Cancer Centre, Toronto, ON, Canada
- 16:50-17:20 CRISPR and gene modification for cancer therapeutics (focus on the future applications of this technology)
Jennifer A. Doudna, UC Berkeley, Berkeley, CA
- 17:20-17:35 Q&A / Discussion



FRIDAY, OCTOBER 8

Plenary Session 2: New Drugs on the Horizon I

10:00 am-11:40 am

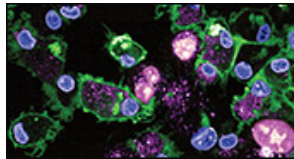
Session Cochairs: James L. Gulley, National Cancer Institute, Bethesda, MD, and Lillian L. Siu, Princess Margaret Cancer Centre, Toronto, ON, Canada

Channel A

- | | |
|-------------|--|
| 10:00-10:05 | Introduction
Lillian L. Siu, Princess Margaret Cancer Centre, Toronto, ON, Canada |
| 10:05-10:20 | Repotrectinib in patients with NTRK fusion-positive advanced solid tumors: Update from the registrational phase 2 TRIDENT-1 trial*
Benjamin Besse, Institut Gustave Roussy, Villejuif, France |
| 10:20-10:25 | Q&A / Discussion |
| 10:25-10:40 | First results of RLY-4008, a potent and highly selective FGFR2 inhibitor in a first-in-human study in patients with FGFR2-altered cholangiocarcinoma and multiple solid tumors*
Lipika Goyal, Massachusetts General Hospital, Boston, MA |
| 10:40-10:45 | Q&A / Discussion |
| 10:45-11:00 | Phase Ia/Ib dose-escalation study of ABL001 (CTX-009, Bispecific antibody targeting DLL4 and VEGF-A) as a single agent in patients with advanced solid tumors*
Jeeyun Lee, Samsung Medical Center, Seoul, Korea |
| 11:00-11:05 | Q&A / Discussion |
| 11:05-11:20 | BDTX-1535, a CNS penetrant MasterKey inhibitor of common, uncommon and resistant EGFR mutations, demonstrates in vivo efficacy and has potential to treat osimertinib-resistant NSCLC with or without brain metastases*
Matthew C. Lucas, Black Diamond Therapeutics, Cambridge, MA |
| 11:20-11:25 | Q&A / Discussion |
| 11:25-11:40 | Panel Discussion |

Break

11:40 am-12:00 pm



Plenary Session 3: Bispecific T-Cell Engagers and Next-Gen CAR T Therapies: Pros and Cons of These Strategies

12:00 pm-2:00 pm

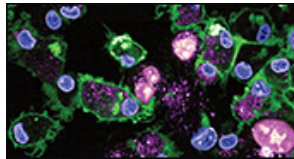
Session Cochairs: Kapil Dhingra, KAPital Consulting LLC, Sparta, NJ and Jeffrey A. Moscow, National Cancer Institute, Bethesda, MD

Channel A

- | | |
|-------------|---|
| 12:00-12:05 | Introduction
Kapil Dhingra, KAPital Consulting LLC, Sparta, NJ |
| 12:10-12:30 | Bispecific T cell engagers (TCEs) for treatment of solid tumors: Challenges and opportunities
Patrick A. Baeuerle, MPM Capital LLC, Cambridge, MA |
| 12:30-12:50 | Title to be announced (CAR-Ts for treatment of solid tumors: Opportunities and challenges)
Martin Pule, University College London, London, England |
| 12:50-13:10 | Bispecific gamma-delta T-cell engagers for treatment of cancer
Hans J. van der Vliet, Amsterdam University Medical Center, Amsterdam, Netherlands |
| 13:10-13:55 | Panel Discussion |

Break

1:55 pm-2:10 pm



Concurrent Sessions 4-6

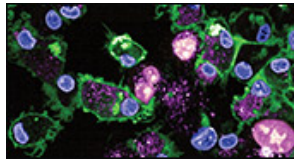
2:10 pm-3:45 pm

CC04: Novel Precision Medicine Combination Trials

Session Cochairs: James H. Doroshow, National Cancer Institute, Bethesda, MD, and Elena Garralda, Vall D'Hebron Institute of Oncology, Barcelona, Spain

Channel A

- | | |
|-------------|--|
| 14:10-14:15 | Introduction
Elena Garralda, Vall D'Hebron Institute of Oncology, Barcelona, Spain |
| 14:15-14:35 | Combination therapy and the search for synergy via greater precision
Peter K. Sorger, Harvard Medical School, Boston, MA |
| 14:35-14:45 | Q&A / Discussion |
| 14:45-15:05 | Novel rare tumor models to assess new drug combinations
James H. Doroshow, National Cancer Institute, Bethesda, MD |
| 15:05-15:15 | Q&A / Discussion |
| 15:15-15:25 | First-in-Human biomarker-driven phase I TRESR trial of ataxia telangiectasia and Rad3-related inhibitor (ATRi) RP-3500 in patients (pts) with advanced solid tumors harboring synthetic lethal (SL) genomic alterations*
Timothy A. Yap, The University of Texas MD Anderson Cancer Center, Houston, TX |
| 15:25-15:30 | Q&A / Discussion |
| 15:30-15:45 | Panel Discussion |

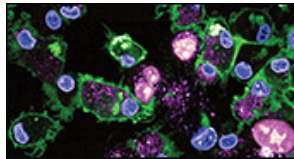


CC05: Preclinical Models and Predictive Value

Session Cochairs: Lori S. Friedman, ORIC Pharmaceuticals, South San Francisco, CA, and Zoë Weaver Ohler, Frederick National Laboratory for Cancer Research, Frederick, MD

Channel B

- | | |
|-------------|--|
| 14:10-14:15 | Introduction
Zoë Weaver Ohler, Frederick National Laboratory for Cancer Research,
Frederick, MD |
| 14:15-14:35 | Supporting precision oncology through non-germline mouse models
Scott W. Lowe, Memorial Sloan Kettering Cancer Center, New York, NY |
| 14:35-14:45 | Q&A / Discussion |
| 14:45-15:05 | Approaches to modulate tumor cell plasticity in combination with
immunotherapy
Claudia Palena, National Cancer Institute, Bethesda, MD |
| 15:05-15:15 | Q&A / Discussion |
| 15:15-15:35 | Insights into therapeutic resistance from mouse models of lung cancer
Katerina A. Politi, Yale Cancer Center, New Haven, CT |
| 15:35-15:45 | Q&A / Discussion |
| 15:45 | Closing Comments |



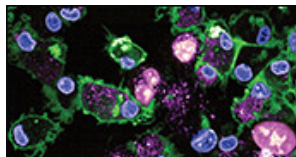
CC06: Radiopharmaceuticals Coming of Age

Session Cochairs: Beverly A. Teicher, National Cancer Institute, Bethesda, MD and Rebecca K.S. Wong, UHN Princess Margaret Cancer Centre, Toronto, ON, Canada
Channel C

- | | |
|-------------|---|
| 14:10-14:15 | Introduction
Beverly A. Teicher, National Cancer Institute, Bethesda, MD |
| 14:15-14:35 | Radiopharmaceuticals and their future in cancer care
Charles A. Kunos, University of Kentucky College of Medicine, Lexington, KY |
| 14:35-14:45 | Q&A / Discussion |
| 14:45-15:05 | Toward molecularly guided radiotherapy: Accelerated through science and technology
David A. Jaffray, The University of Texas MD Anderson Cancer Center, Houston, TX |
| 15:05-15:15 | Q&A / Discussion |
| 15:15-15:25 | Identifying therapeutic options for patients with advanced prostate cancer through genes in liquid biopsies*
Seta Derderian, McGill University Health Center, Montreal, QC, Canada |
| 15:25-15:30 | Q&A / Discussion |
| 15:30-15:45 | Panel Discussion |

Break

3:45 pm-4:00 pm

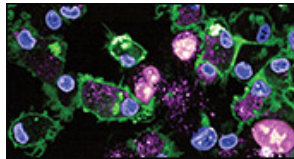


AACR Chemistry in Cancer Research (CICR) Working Group Town Hall

4:00 pm-5:15 pm

Channel A

- | | |
|-------------|---|
| 16:00-16:05 | Introduction and overview of 2021-2022 CICR Working Group programs and activities
Mary M. Mader, MM Molecular Pharma Consulting, Melrose, MA
2021-2022 Chair-elect, AACR Chemistry in Cancer Research Working Group |
| 16:05-16:20 | Perspective on bivalent degraders
Alessio Ciulli, University of Dundee, Dundee, United Kingdom |
| 16:20-16:35 | Perspective on molecular glue degraders
Eric Fischer, Harvard Medical School, Dana-Farber Cancer Institute, Boston, MA |
| 16:35-16:50 | A complex task: Perturbing oncogenic transcriptional networks with small molecules
Angela Koehler, Broad Institute of Harvard and MIT, Cambridge, MA |
| 16:50-17:15 | Panel Discussion |



SATURDAY, OCTOBER 9

Plenary Session 4: DNA Damage Response Beyond PARP

10:00 am-11:50 am

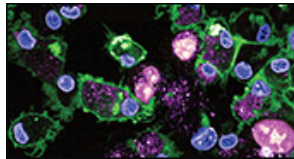
Session Cochairs: Ruth Plummer, Northern Centre for Cancer Care, Newcastle upon Tyne, United Kingdom and Ioannis Gounaris, Merck-Serono Ltd., Feltham, United Kingdom

Channel A

- | | |
|-------------|--|
| 10:00-10:05 | Introduction
Ioannis Gounaris, Merck-Serono Ltd., Feltham, United Kingdom |
| 10:05-10:25 | Preclinical development of novel DNA repair inhibitor combinations
Geoffrey I. Shapiro, Dana-Farber Cancer Institute, Boston, MA |
| 10:25-10:35 | Q&A / Discussion |
| 10:35-10:55 | Targeting the DDR beyond PARP inhibitors: Novel agents and rational combinations
Timothy A. Yap, The University of Texas MD Anderson Cancer Center, Houston, TX |
| 10:55-11:05 | Q&A / Discussion |
| 11:05-11:25 | Patient identification for DDRi trials
Ruth Plummer, Northern Centre for Cancer Care, Newcastle upon Tyne, United Kingdom |
| 11:25-11:35 | Q&A / Discussion |
| 11:35-11:50 | Panel Discussion |

Break

11:50 am-12:05 pm



Plenary Session 5: Drugging Difficult Targets

12:05 pm-1:55 pm

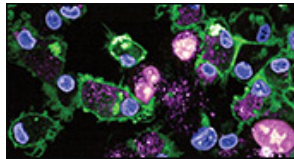
Session Cochairs: Fiona H. Blackhall, University of Manchester, Manchester, England and Pasi A. Jänne, Dana-Farber Cancer Institute, Boston, MA

Channel A

- | | |
|-------------|---|
| 12:05-12:10 | Introduction
Fiona H. Blackhall, University of Manchester, Manchester, England |
| 12:10-12:25 | Mechanisms of acquired resistance to KRAS G12C inhibitors: Opportunities and challenges
Pasi A. Jänne, Dana-Farber Cancer Institute, Boston, MA |
| 12:25-12:30 | Q&A / Discussion |
| 12:30-12:50 | Discovery and characterization of MRTX1133, a selective non-covalent inhibitor of KRAS ^{G12D}
James G. Christensen, Mirati Therapeutics, San Diego, CA |
| 12:50-12:55 | Q&A / Discussion |
| 12:55-13:15 | Discovery and development of RAS(ON) inhibitors beyond KRAS G12C
Stephen Kelsey, Revolution Medicines, Inc., Redwood City, CA |
| 13:15-13:20 | Q&A / Discussion |
| 13:20-13:30 | A phase 1b study evaluating the safety and efficacy of sotorasib, a KRAS G12C inhibitor, in combination with trametinib, a MEK inhibitor, in KRAS p.G12C-mutated solid tumors*
Suresh Ramalingam, Emory University School of Medicine, Atlanta, GA |
| 13:30-13:40 | A phase 1b study evaluating the combination of sotorasib, a KRAS G12C inhibitor, and afatinib, a pan-ErbB tyrosine kinase inhibitor, in advanced KRAS p.G12C mutated non-small cell lung cancer (NSCLC)*
David Gandara, University of California Davis Comprehensive Cancer Center, Sacramento, CA |
| 13:40-13:55 | Panel Discussion |

Break

1:55 pm-2:10 pm



Concurrent Sessions 7-9

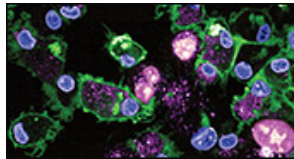
2:10 pm-3:45 pm

CC07: Targeting Molecular Residual Disease (MRD) with ctDNA Technologies

Session Cochairs: Benjamin Besse, Institut Gustave Roussy, Villejuif, France, and Jeanne Tie, Peter MacCallum Cancer Centre, Melbourne, VIC, Australia

Channel A

- 14:10-14:15 Introduction
Benjamin Besse, Institut Gustave Roussy, Villejuif, France
- 14:15-14:35 Clinical application of ctDNA in the MRD setting
Jeanne Tie, Peter MacCallum Cancer Centre, Melbourne, VIC, Australia
- 14:35-14:45 Q&A / Discussion
- 14:45-15:05 Biomarkers for precision oncology
Alain Thierry, Institut de Recherche en Cancérologie de Montpellier, Montpellier, France
- 15:05-15:15 Q&A / Discussion
- 15:15-15:25 Whole exome and whole genome methylation sequencing of low-input cfDNA to implement precision medicine in metastatic castration resistant prostate cancer*
Raju Kandimalla, Bristol Myers Squibb, San Diego, CA
- 15:25-15:30 Q&A / Discussion
- 15:30-15:45 Panel Discussion

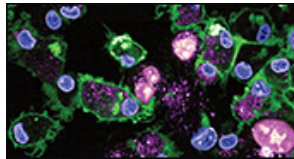


CC08: Tumor Microbiome

Session Cochairs: Tim F. Greten, National Cancer Institute, Bethesda, MD, and Laurence Zitvogel, Institut Gustave Roussy, Villejuif, France

Channel B

- 14:10-14:15 Introduction
Tim F. Greten, National Cancer Institute, Bethesda, MD
- 14:15-14:35 The role of the tumor microbiome in cancer
Jennifer A. Wargo, The University of Texas MD Anderson Cancer Center, Houston, TX
- 14:35-14:45 Q&A / Discussion
- 14:45-15:05 Microbiota, immunity, and cancer
Maria Rescigno, Humanitas University, Milan, Italy
- 15:05-15:15 Q&A / Discussion
- 15:15-15:45 Panel Discussion



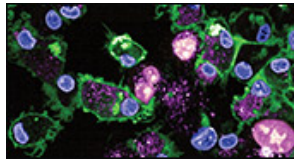
CC09: Protein-Protein Inhibitors (PPI) in Hematologic Malignancies: Challenges and Promise

Session Cochairs: Zaneta Nikolovska-Coleska, University of Michigan, Ann Arbor, MI, and Tim Somervaille, Cancer Research UK Manchester Institute, Manchester, England
Channel C

- 14:10-14:15 Introduction
Zaneta Nikolovska-Coleska, University of Michigan, Ann Arbor, MI
- 14:15-14:35 Inositol transporter SLC5A3 is a synthetic lethal dependency Acute Myeloid Leukemia
Christopher R. Vakoc, Cold Spring Harbor Laboratory, Cold Spring Harbor, NY
- 14:35-14:45 Q&A / Discussion
- 14:45-15:05 Targeting protein-protein interactions through induced protein degradation
Shaomeng Wang, University of Michigan Rogel Cancer Center, Ann Arbor, MI
- 15:05-15:15 Q&A / Discussion
- 15:15-15:25 Targeting BCL-XL/BCL-2 by PROTAC 753b effectively eliminates AML cells and enhances efficacy of chemotherapy by targeting senescent cells*
Yannan Jia, The University of Texas MD Anderson Cancer Center, Houston, TX
- 15:25-15:30 Q&A / Discussion
- 15:30-15:45 Panel Discussion

Break

3:45 pm-4:00 pm



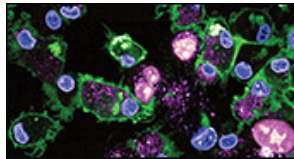
Plenary Session 6: New Drugs on the Horizon II

4:00 pm-5:40 pm

Session Cochairs: James L. Gulley, National Cancer Institute, Bethesda, MD, and Ruth Plummer, Northern Centre for Cancer Care, Newcastle upon Tyne, United Kingdom

Channel A

- | | |
|-------------|--|
| 16:00-16:05 | Introduction
James L. Gulley, National Cancer Institute, Bethesda, MD |
| 16:05-16:20 | A phase I, first-in-human clinical trial of the GDF-15 neutralizing antibody CTL-002 in subjects with advanced stage solid tumors*
Eugen Leo, CatalYm GmbH, Planegg-Martinsried, Germany |
| 16:20-16:25 | Q&A / Discussion |
| 16:25-16:40 | Discovery of TAS0953/HM06, a novel next generation RET-specific inhibitor capable of inhibiting RET solvent front mutations*
Isao Miyazaki, Taiho Pharmaceutical Company, Tukuba, Japan |
| 16:40-16:45 | Q&A / Discussion |
| 16:45-17:00 | Discovery of mutant-selective PI3Ka and isoform-selective FGFR3 inhibitors: Insights from the Loxo Oncology at Lilly Discovery Model
David M. Hyman, Loxo Oncology at Lilly, Stamford, CT |
| 17:00-17:05 | Q&A / Discussion |
| 17:05-17:20 | ST101, a peptide targeting oncogenic transcription factor C/EBP β : Initial safety, efficacy, pharmacokinetic (PK) and pharmacodynamic (PD) data from an ongoing phase 1 dose escalation study in patients with advanced metastatic solid tumors*
Nehal J. Lakhani, START Midwest, Grand Rapids, MI |
| 17:20-17:25 | Q&A / Discussion |
| 17:25-17:40 | Panel Discussion |



SUNDAY, OCTOBER 10

Plenary Session 7: HER2-directed Therapies - Dedicated to the Memory of José Baselga

10:00 am-11:50 am

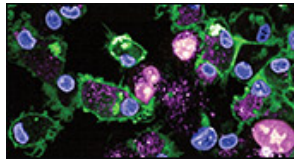
Session Cochairs: Carlos L. Arteaga, UT Southwestern Harold C. Simmons Comprehensive Cancer Center, Dallas, TX, and Martine J. Piccart, Institut Jules Bordet, Brussels, Belgium

Channel A

- 10:00-10:05 Introduction
Carlos L. Arteaga, UT Southwestern Harold C. Simmons Comprehensive Cancer Center, Dallas, TX, and Martine J. Piccart, Institut Jules Bordet, Brussels
- 10:05-10:25 Tailoring treatment in HER2+ breast cancer: Remarkable advances, transformed outcomes
Lisa A. Carey, University of North Carolina Lineberger Comprehensive Cancer Center, Chapel Hill, NC
- 10:25-10:35 Q&A / Discussion
- 10:35-10:55 HER2 heterogeneity implications for biology, tumor evolution, and treatment
Aleix Prat, Hospital Clinic, Barcelona, Spain
- 10:55-11:05 Q&A / Discussion
- 11:05-11:25 Novel treatment approaches for HER2-positive breast cancer
Ian E. Krop, Dana-Farber Cancer Institute, Boston, MA
- 11:25-11:35 Q&A / Discussion
- 11:35-11:50 Panel Discussion

Break

11:50 am-12:05 pm



Plenary Session 8: Non T Lymphocyte Immune Effector Cell Therapies

12:05 pm-1:55 pm

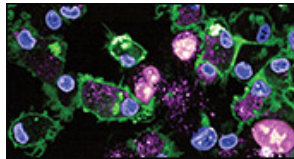
Session Cochairs: Rosandra N. Kaplan, National Cancer Institute, Bethesda, MD, and Frederick L. Locke, Moffitt Cancer Center, Tampa, FL

Channel A

- | | |
|-------------|--|
| 12:05-12:10 | Introduction
Frederick L. Locke, Moffitt Cancer Center, Tampa, FL |
| 12:10-12:28 | Memory-like NK cell therapy in the treatment of advanced malignancies
Rizwan Romee, Dana-Farber Cancer Institute, Boston, MA |
| 12:28-12:33 | Q&A / Discussion |
| 12:33-12:51 | Targeting ovarian cancer mediated suppression of NKT cell activation
Tonya J. Webb, University of Maryland School of Medicine, Baltimore, MD |
| 12:51-12:56 | Q&A / Discussion |
| 12:56-13:14 | Myeloid cells and therapeutic opportunities for microenvironmental regulation
Rosandra N. Kaplan, National Cancer Institute, Bethesda, MD |
| 13:14-13:19 | Q&A / Discussion |
| 13:19-13:37 | Chimeric antigen receptor macrophages for the treatment of solid tumors
Saar Gill, University of Pennsylvania Perelman School of Medicine, Philadelphia, PA |
| 13:37-13:42 | Q&A / Discussion |
| 13:42-13:55 | Panel Discussion |

Break

1:55 pm-2:10 pm



Plenary Session 9: Protein Degraders and Molecular Glues

2:10 pm-4:00 pm

Session Cochairs: Susan M. Galbraith, AstraZeneca, Cambridge, England, and Kevan M. Shokat, University of California, San Francisco, CA

Channel A

- | | |
|-------------|--|
| 14:10-14:15 | Introduction
Susan M. Galbraith, AstraZeneca, Cambridge, England |
| 14:15-14:35 | PROTACs and targeted protein degradation: A new therapeutic modality
Craig M. Crews, Yale University, New Haven, CT |
| 14:35-14:45 | Q&A / Discussion |
| 14:45-15:05 | How do cullin-RING ligases ubiquitylate structurally diverse substrates?
Brenda A. Schulman, Max Planck Institute of Biochemistry, Martinsried, Germany |
| 15:05-15:15 | Q&A / Discussion |
| 15:15-15:35 | Targeted protein degradation for the treatment of cancer
Benjamin L. Ebert, Dana Farber Cancer Institute, Boston, MA |
| 15:35-15:45 | Q&A / Discussion |
| 15:45-16:00 | Panel Discussion |

Break

4:00 pm-4:15 pm

Closing Session: What is the Biggest Roadblock in Anticancer Drug Development in the Next Decade and What Can be done to Mitigate?

4:15 pm-5:45 pm

Moderator: Jean-Charles Soria, Amgen, Thousand Oaks, CA

Panelists:

Emiliano Calvo, START Madrid, Madrid, Spain

Levi A. Garraway, Genentech, South San Francisco, CA

James L. Gulley, National Cancer Institute, Bethesda, MD

Maria T. Koehler, REPARE Therapeutics, Boston, MA

Ruth Plummer, Northern Centre for Cancer Care, Newcastle upon Tyne, United Kingdom

Tatiana M. Prowell, Johns Hopkins Sidney Kimmel Comprehensive Cancer Center, U.S. Food and Drug Administration, Baltimore, MD

Lillian L. Siu, Princess Margaret Cancer Centre, Toronto, ON, Canada

Josep Tabernero, Vall d'Hebron University Hospital, Barcelona, Spain