

**A02 Probing the roles of SUMOylation in B-cell lymphoma cells by using a selective SUMO inhibitor Subasumstat (TAK-981).** Tingting Liu. City of Hope, Duarte, CA, United States.

**A03 Discovery and evaluation of GT19630, a c-Myc/n-Myc degrader, for targeting c-Myc-driven B-cell malignancies, acute myeloid leukemia (AML) and n-Myc driven cancers.** Liandong Ma. Kintor Pharmaceutical Limited, Suzhou, China (Mainland).

**A04 Targeted protein degradation as a strategy to overcome non-covalent BTK inhibitor resistance in lymphoma.** Skye Montoya. Sylvester Comprehensive Cancer Center at the University of Miami Miller School of Medicine, Miami, FL, United States.

**A05 Olfactory receptors as a new therapeutic target in lymphomas.** Giulio Sartori. Institute of Oncology Research, Faculty of Biomedical Sciences, USI, Bellinzona, Switzerland.

**A06 Strategies to circumvent resistance to cyclin-dependent kinase-9 inhibition (CDK9i) in non-Hodgkin lymphoma (NHL).** Elana Thieme. City of Hope, Duarte, CA, United States.

**A07 BTM 3566, a Novel Activator of the Mitochondrial Stress Response Promotes Robust Therapeutic Responses in vitro and in vivo in Diffuse Large B-cell Lymphoma.** Matthew Kostura. Bantam Pharmaceutical, Research Triangle Park, NC, United States.

**A08 Diagnosis of breast implant associated anaplastic large cell lymphoma by analysis of cytokines in peri-implant effusions.** Marshall E. Kadin. Brown Alpert School of Medicine, Providence, RI, United States.

**A09 Telomerase activity as a biomarker to predict outcomes of CAR T-cell therapy.** Praveen Ramakrishnan Geethakumari. UT Southwestern Medical Center, Dallas, TX, United States.

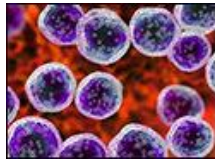
**A10 Radio labelled AMD3100 for the management of malignant lymphoma: Translational study.** Jaya Shukla. Post Graduate Institute of Medical Education and Research, Chandigarh, India.

**A11 The International Prognostic Score and HIV status predict red cell concentrate transfusion need in Hodgkin Lymphoma.** Estelle R Verburgh. University of Cape Town, Cape Town, South Africa.

**A12 Pervasive hypermutation of super-enhancer regions dysregulates oncogene expression in diffuse large B-cell lymphoma.** Elodie Bal. Institute for Cancer Genetics, Columbia University, New York, NY, United States.

**A13 Evolutionary history of transformation from chronic lymphocytic leukemia to Richter syndrome.** Erin M Parry. Dana-Farber Cancer Institute, Boston, MA, United States.

**A14 The RNA helicase DDX21 cooperates with ETS1 and FLI1 in cell cycle and RNA processing.** Giulio Sartori. Institute of Oncology Research, Faculty of Biomedical Sciences, USI, Bellinzona, Switzerland.



**A15 Clinico-pathologic and molecular characteristics of primary extranodal germinal-center B-cell like diffuse large B-cell lymphoma (EN GCB-DLBCL).** Brian Lue. UT Southwestern Medical Center, Dallas, TX, United States.

**A16 Liquid biopsy for the detection and characterization of canine lymphoma.** Angela L. McCleary-Wheeler. PetDx, La Jolla, CA, United States.

**A17 The immune checkpoints TIGIT and PD-1 are markedly upregulated in NLPHL compared to classical Hodgkin Lymphoma.** Jay Gunawardana. Mater Research, University of Queensland, Translational Research Institute, Brisbane, QLD, Australia.

**A18 GRK2, an inhibitor of MALT1-dependent oncogenic signaling, is downregulated by microRNA in ABC-DLBCL.** Jing Cheng. University of Pittsburgh, Pittsburgh, PA, United States.

**A19 Integrated single cell analysis reveals co-evolution of malignant B cells and the tumor microenvironment in transformed follicular lymphoma.** Jeffrey W. Craig. University of British Columbia, BC Cancer Agency, Vancouver, BC, Canada.

**A20 Treatment of elderly patients with Peripheral T-Cell Lymphoma (PTCL): A single institution experience.** Muhammad Salman Faisal. Roswell Park Cancer Institute, Buffalo, NY, United States.

**A21 Novel autochthonous mouse models as preclinical tools in the study of MCD/C5 DLBCL.** Gero Knittel. Essen University Hospital, Essen, Germany.

**A22 Cost effectiveness of second line Axicabtagene ciloleucel in relapsed refractory diffuse large B-cell lymphoma.** Swetha Kambhampati. City of Hope, Duarte, CA, United States.

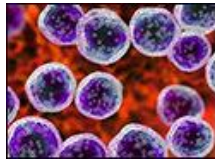
**A23 Alternative cyclin D1 transcripts in Mantle Cell Lymphoma.** Chioniso P. Masamha. Butler University, Indianapolis, IN, United States.

**A24 BTG1 mutations confer a fitness advantage and promote aggressive B cell lymphoma development by lowering the threshold for MYC induction.** Coraline Mlynarczyk. Weill Cornell Medicine, New York City, NY, United States.

**A25 Copanlisib population pharmacokinetics (popPK) and exposure-response (ER) in relapsed indolent non-Hodgkin lymphoma (iNHL): Analysis from the 1-year follow-up of the phase III, randomized CHRONOS-3 trial.** Peter N. Morcos. Bayer HealthCare Pharmaceuticals, Whippany, NJ, United States.

**A26 SOX11 drives B1a lineage commitment and B1a/MCL-like lymphoma formation in mice.** Tim Pieters. Ghent University, Ghent, Belgium.

**A27 Impact of a validated composite comorbidity score on outcomes in patients treated with CAR T-cell therapy for diffuse large B cell lymphoma (DLBCL): A multicenter real-world evidence (RWE) study.** Geoffrey Shouse. City of Hope Comprehensive Cancer Center, Duarte, CA, United States.



3rd International Meeting  
**Advances in Malignant Lymphoma**  
June 23-26 | Westin Copley Place | Boston, MA

**AACR** American Association  
for Cancer Research®  
In Cooperation with  **ICML**  
2208030

**A28 BCL10 mutations define distinct dependencies guiding precision therapy for DLBCL.** Min Xia. Weill Cornell Medicine, New York, NY, United States.

**A29 A selective HDAC3 inhibitor synergizes with 5-azacytidine in diffuse large B-cell lymphoma.** Pilar M Dominguez. Peter MacCallum Cancer Centre, Melbourne, Australia.

**A32 Copanlisib plus rituximab vs placebo plus rituximab in patients with follicular lymphoma: 1-year follow-up of the Phase III, randomized CHRONOS-3 trial.** Marcelo Capra. Centro de Hematologia e Oncologia, Hospital Mãe de Deus, Porto Alegre, Brazil.

**A36 Building of a large B-cell lymphoma (LBCL) patient-derived xenograft (PDX) repository.** Haopeng Yang. University of Texas MD Anderson Cancer Center, Houston, TX, United States.

**A37 Single-cell RNA sequencing reveals that childhood classical Hodgkin Lymphoma resembles normal inflammation except for T cell exhaustion.** Jurrian K. de Kanter. Princess Máxima Center for Pediatric Oncology, Utrecht, Netherlands.

**A38 Cd70 genetic perturbation limits the development of an effective CD8 + T-cell immune response to Bcl6-driven diffuse large B-cell lymphoma.** Elisa Mandato. Dana-Farber Cancer Institute, Boston, MA, United States.

**A39 Targeting tumor-microenvironmental dependencies as a therapeutic approach in Chronic Lymphocytic Leukemia (CLL).** Salma Parvin. Dana Farber Cancer Institute, Boston, MA, United States.

**A40 Evaluation of the tumor microenvironment in Mycosis Fungoides using the PanCancer IO 360 TM assay and nCounter® platform.** Jesse Jaso. The University of Texas Southwestern Medical Center, Dallas, TX, United States.