

AACR Special Conference Precision, Prevention, Early Detection, and Interception of Cancer

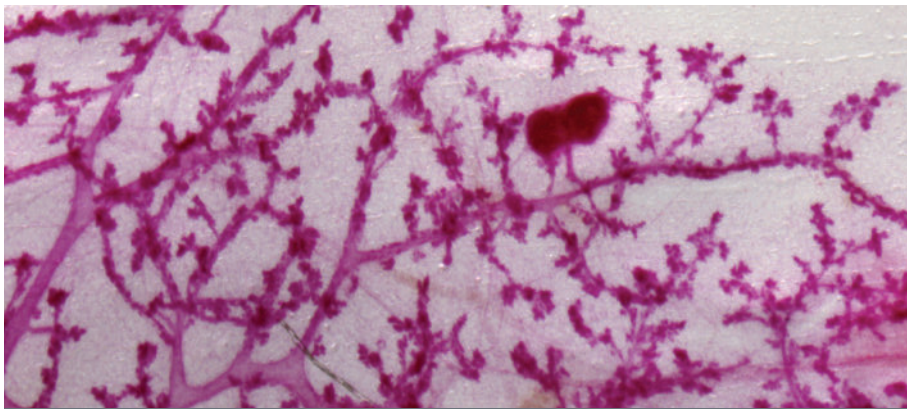
November 17-19, 2022 | Austin, TX

DISCLOSURE OF FINANCIAL RELATIONSHIPS

In compliance with the standards set by the Accreditation Council for Continuing Medical Education (ACCME), it is the policy of the American Association for Cancer Research (AACR) that the information presented at CME activities will be unbiased and based on scientific evidence. To help participants make judgments about the presence of bias, the AACR has provided information that planning committee members, speakers, and abstract presenters have disclosed about financial relationships they have with ineligible companies whose primary business is producing, marketing, selling, re-selling, or distributing healthcare products or services used by or on patients.

Relationships are abbreviated as follows: E, Employment; FO, Fiduciary Officer; IC, Independent Contractor; S, Stock; SO, Stock Option; OS, Other Securities; OBO, Other Business Ownership; GC, Grant/Contract; T, Travel; GI, Gift; P, Patent; TM, Trademark, C, Copyright; OIP, Other Intellectual Property; O, Other

Last Name	First Name	All Relationships	Type	Role
Albini	Adriana	No Relationships		Speaker
Arthur	Ronald	No Relationships		Staff
Bhatia	Sangeeta N.	Vertex, Glympse Bio, Cobalt Therapeutics, Satellite Bio, Port Therapeutics, Brown Unibersity, Catalio Capital, Global Oncology, CEND Therapeutics	IC, S, SO, SO, O, E, SO, SO, IC, IC, IC, SO	Program Committee, Speaker
Bolton	Kelly L.	goodcell, Bristol-Myers Squibb, Servier Pharmaceuticals LLC	IC, IC, IC	Speaker
Brown	Powell H.	GeneTex	S	Speaker
Castle	Philip E.	No Relationships		Program Committee, Speaker
Chan	Andrew T.	Bayer, Pfizer Inc., Boehringer Ingelheim, Freenome, Zoe Global Ltd	IC, IC, IC, GC, GC	Speaker
Chiu	Darren J.	Janssen Biotech	GC	Speaker
Crosby	David	EIT Health, F. Hoffmann-La Roche	IC, IC	Speaker
De Carvalho	Daniel D.	Adela, Pfizer, patents related to cfDNA methylation analysis technologies	IC, S, GC, P	Speaker
Diaz, Jr.	Luis A.	Jounce Therapeutics, Personal Genome Diagnostics, Thrive Earlier Detect, PetDx, Epitope, Jounce Therapeutics, Exact Biosciences, 4Paws, Personal Genome Diagnostics, Merck, Personal Genome Diagnostics, LabCorp, Stand Up To Cancer, PetDx, 4Paws, Innovatus Capital Partners, Memorial Sloan-Kettering Cancer Center, Neophore, Neophore, Blackstone, Delfi Diagnostics	SO, FO, S, IC, FO, FO, OBO, IC, S, IC, IC, OBO, GC, S, S, IC, E, IC, SO, IC, S	Program Committee

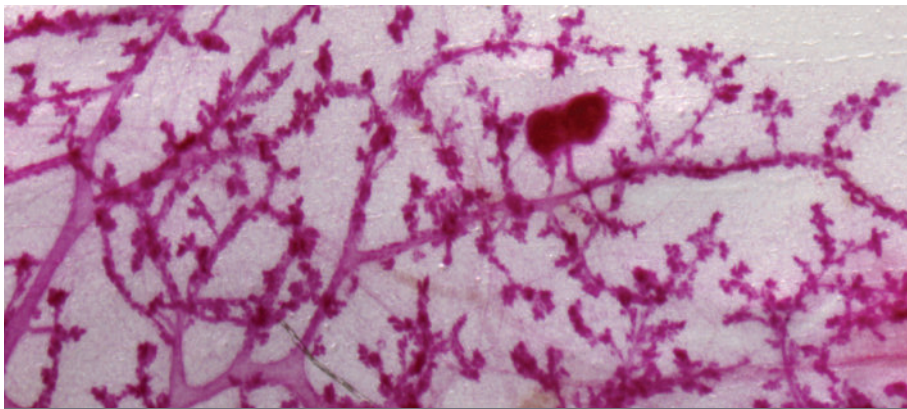


AACR Special Conference Precision, Prevention, Early Detection, and Interception of Cancer

November 17-19, 2022 | Austin, TX

DISCLOSURE OF FINANCIAL RELATIONSHIPS

Last Name	First Name	All Relationships	Type	Role
Disis	Mary L.	Epithany	S	Speaker
Etzioni	Ruth D.	No Relationships		Speaker
Ferrara	Katherine W.	No Relationships		Program Committee, Speaker
Giannakis	Marios	Bristol-Myers Squibb, Servier Pharmaceuticals LLC, Janssen Biotech	GC, GC, GC	Speaker
Griffith	Derek	No Relationships		Speaker
Hanash	Samir	Patent - Biomarker panel for assessment of lung cancer risk and of indeterminate nodules, Trademark - Pan cancer marker panel	P, TM	Speaker
Hawk	Ernest T.	VCU Massey Cancer Center, Cancer Prevention and Research Institute of Texas, Kansas University, American Association for Cancer Research, Medical University of South Carolina, School of Medicine, Johns Hopkins University, University of New Mexico, CATCH Global Foundation	IC, GC, IC, IC, IC, IC, IC, IC	Program Committee
Kantoff	Philip	Anji Pharmaceuticals, Veru Inc., Convergent Therapeutics, Candel Therapeutics, Context Therapeutics, Xenimmune Therapeutics, SynDevRx, Convergent Therapeutics, PrognomiQ, Essa Pharma, ImmunisAI, Context Therapeutics, Essa Pharma	IC, IC, SO, IC, SO, IC, IC, E, IC, SO, IC, FO, FO	Program Committee
LaBaer	Joshua	ASU, ATCC, NCI,BCRF, NIAID, Nautikus, Ordinatrix, Gila Dx, iNanoBio, Tango Bio	E, IC, GC, GC, GC, S, S, S	Speaker
Lee	Hakho	No Relationships		Speaker
Liu	Minetta C.	Natera	E	Speaker
Lowy	Douglas R.	No Relationships		Speaker
Martin-Alonso	Maria Carmen	Massachusetts Institute of Technology	E, P	Speaker
Papadopoulos	Nickolas	Patents and IP owned by Johns Hopkins University, CAGE Pharma, ManaTbio, Vidium, ManaTbio, Personal Genome Diagnostics, Haystack Oncology, Haystack Oncology, , Haystack Oncology, , Thrive Earlier Detection, Exact Sciences, NeoPhore, ThriveEarlierDetection, an Exact Company, ThriveEarlierDetection, an Exact Company, Haystack Oncology, CAGE Pharma	P, SO, P, IC, IC, SO, S, S, S, P, FO, P, FO, S, SO, S, IC, IC, IC	Speaker



AACR Special Conference Precision, Prevention, Early Detection, and Interception of Cancer

November 17-19, 2022 | Austin, TX

DISCLOSURE OF FINANCIAL RELATIONSHIPS

Last Name	First Name	All Relationships	Type	Role
Pashayan	Nora	No Relationships		Speaker
Pennathur	Arjun	No Relationships		Speaker
Pfefferkorn	Roxana	Johnson & Johnson Health Care Systems Inc.	GC	Speaker
Raghavan	Derek	Bristol Myers 501C3 Charitable Foundation, Leon Levine Foundation	GC, GC	Speaker
Rebbeck	Timothy	No Relationships		Program Committee, Speaker
Rechis	Ruth	No Relationships		Speaker
Rotemberg	Veronica	Inhabit Brands, Inc	IC	Speaker
Shieh	Yiwey	National Cancer Institute	GC	Speaker
Spira	Avrum E.	Johnson and Johnson	E	Speaker
Srivastava	Sudhir	No Relationships		Speaker
Thoppil	Roslin	No Relationships		Staff
Velculescu	Victor E.	Patents and patent applications related to cancer genomics and cell-free DNA analyses, Delfi Diagnostics, Viron Therapeutics Holdings, Epitope	P, FO, IC, IC	Speaker
Vilar-Sanchez	Eduardo	No Relationships		Speaker
Weh	Katherine M.	No Relationships		Speaker

All of the relevant financial relationships listed for these individuals have been mitigated.