

**[R] – Remote Presentation Only**

**Poster Session (To be presented on November 18 from 7:00- 9:00 p.m. CT)**

**P001 Frequency and covariates of chemoprevention use among women at high risk for breast cancer.** Claire Conley. Georgetown University, Washington, D.C., USA.

**P002 Timing onset of homologous recombination deficiency before cancer diagnosis in BRCA1/2 mutation carriers.** Dominik Glodzik. Harvard Medical School, Boston, Massachusetts, USA.

**P003 Computational Identification of Ovarian Cancer Candidate Genes with Mutated Protein Structures caused by Missense Variants.** Ian Hou. The John Cooper School, The Woodlands, Texas, USA.

**P004 Targeting the RXR Pathway for the Prevention of Triple-Negative Breast Cancer.** Cassandra Moyer. The University of Texas MD Anderson Cancer Center, Houston, Texas, USA.

**P005 SLC38A5 characterization and its tumor promoting role in pancreatic ductal adenocarcinoma.** Tyler Snięowski. Texas Tech University Health Sciences Center, Lubbock, Texas, USA.

**P006 Targeting the zymogen granule protein 16B (ZG16B) to suppress breast cell growth and invasiveness.** Iván Uray. University of Debrecen, Debrecen, Hungary.

**P007 Short-term PI3K inhibition prevents breast cancer in preclinical models.** Amy Ku. Baylor College of Medicine, Houston, Texas, USA.

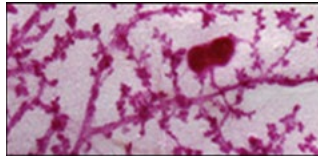
**P008 Native Cell-Free DNA sequence analysis reliably infers epigenetically diverse subtypes of prostate cancer.** Navonil Sarkar. Medical College of Wisconsin, Milwaukee, Wisconsin, USA.

**P009 Plasma concentrations of multiple oxysterols and risk of colorectal adenomas.** Michael Passarelli. Dartmouth College, Hanover, New Hampshire, USA.

**P010 Molecular mediators of the energy balance-colorectal cancer link: evaluating the gut microbiome and pro-inflammatory biomarkers.** Caroline Himbert. Huntsman Cancer Institute, Salt Lake City, Utah, USA.

**P011 Clonal hematopoiesis and risk of lethal prostate cancer: A prospective cohort study with long-term follow-up.** Konrad Stopsack. Harvard T.H. Chan School of Public Health, Boston, Massachusetts, USA.

**P012 Mutation hotspots in skin, bladder, and lung cancer as targets of carcinogenic risk assessment in clinically normal-appearing tissue.** Sydney Grant. Roswell Park Comprehensive Cancer Center, Buffalo, New York, USA.



**P013 Impact of blood-based biomarkers for predicting lung cancer mortality in the PLCO cohort.** Ehsan Irajizad. University of Texas MD Anderson Cancer Center, Houston, Texas, USA.

**P014 A novel role of mutant APC and n3-PUFA in reshaping cholesterol-dependent Wnt pathway-associated proteolipid nanocluster organization and signaling in colorectal cancer.** Alfredo Erazo-Oliveras. Texas A&M University, College Station, Texas, USA.

**P015 Mechanisms of mitochondrial dysfunction in development of mismatch repair-deficient endometrial cancer.** Diana Moreno. Texas Tech University Health Sciences Center Paul L. Foster School of Medicine, El Paso, Texas, USA.

**P016 Endomembranes accumulate unesterified cholesterol in Apc mutant models and humans with CRC as assessed by RNAseq and confocal microscopy.** Monica Munoz Vega. Texas A&M University, College Station, Texas, USA.

**P017 Early detection of ovarian cancer in high risk individuals using circulating miRNAs: The MiDe study.** Kevin Elias. Brigham and Women's Hospital, Boston, Massachusetts, USA.

**P018 Differences in guideline-recommended age of human papillomavirus (HPV) vaccine initiation and completion in the United States. [R]** Trinity Casimir. New York University, New York, New York, USA.

**P019 Continued depression of breast and lung cancer screening among Medicare enrollees during the COVID-19 pandemic.** Christopher Duc Doan. The University of Texas Medical Branch at Galveston, Galveston, Texas, USA.

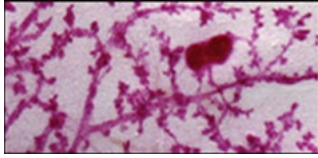
**P020 Describing and modelling the burden of neoplasms in Ghana to guide cancer prevention and screening planning and allocation.** Timothy Rebbeck. Dana-Farber Cancer Institute, Harvard Medical School, Boston, Massachusetts, USA.

**P021 Association of social determinants of health and healthcare-related factors with delayed total neoadjuvant therapy among rectal cancer patients from the National Cancer Database.** Megan Mai. Texas Tech University Health Science Center, Lubbock, Texas, USA.

**P022 Quantitative Measures of Breast Density and Breast Cancer Risk Prediction Among Black Women in a Screening Population. [R]** Mattia Mahmoud. University of Pennsylvania Perelman School of Medicine, Philadelphia, Pennsylvania, USA.

**P023 The Impact of limited English proficiency and healthcare access on HPV vaccine uptake in the United States. [R]** Marian Talip. North Carolina State University, Raleigh, North Carolina, USA.

**P024 Participation, barriers, and facilitators of cancer screening among sexual and gender minority groups: A scoping review.** Emily Heer. University of Calgary, Calgary, Alberta, Canada.



**P025 Tobacco Screening Practices and Perceived Barriers in Offering Tobacco Cessation Services in the Primary Prevention of Lung Cancer among Texas Healthcare Centers Providing Behavioral Health Treatment.** Ammar Siddiqi. Rice University, Houston, Texas, USA.

**P026 Exploring factors associated with preferences for human papillomavirus (HPV) self-sampling among racially- and ethnically-diverse women: A cross-sectional study.** Serena Xiong. Washington University in St. Louis, St. Louis, Missouri, USA.

**P027 Interest and uptake rates for cancer risk genetic testing in the AHEAD early detection program.** Candace Westgate. Adventist Health, St. Helena, California, USA.

**P028 Methylation biomarkers for colorectal cancer early detection and survival prognostics impact gene expression and link to cancer-related biological pathways.** Kristi Kruusmaa. Universal Diagnostics SL, Sevilla, Spain.

**P029 Proteomic age acceleration associated with cancer risk in the Atherosclerosis Risk in Communities (ARIC) Study.** Shuo Wang. University of Minnesota, Minneapolis, Minnesota, USA.

**P030 Prospective analysis of plasma metabolites for early detection of high-grade serous ovarian cancer.** Naoko Sasamoto. Brigham and Women's Hospital, Boston, Massachusetts, USA.

**P031 Glycerolipid metabolism is a key early-detection biomarker for spontaneous ovarian cancer onset.** Kathryn Ellwood. University of Delaware, Newark, Delaware, USA.

**P032 A novel multiplex immunoassay for the early detection of bladder cancer.** Hideki Furuya. Cedars-Sinai Medical Center, Los Angeles, California, USA.

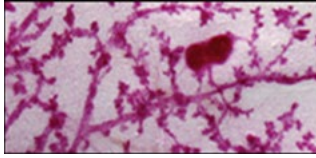
**P033 Characterizing the relationship between arsenic exposure and breast cancer risk in Canada.** Katherine Pullella. University of Toronto, Toronto, Ontario, Canada.

**P034 Prevent Cancer-Greenville: Identifying and Influencing Cancer Risk.** Larry Gluck. Prisma Health, Greenville, South Carolina, USA.

**P035 Associations between Meat and Fish Intake and Aggressive Prostate Cancer in the North Carolina-Louisiana Prostate Cancer Project (PCaP).** Jessica Sainyo. Arnold School of Public Health at The University of South Carolina, Columbia, South Carolina, USA.

**P036 Circulating osteoprotegerin levels and breast cancer risk among women with a BRCA1 mutation: A prospective study.** Shana Kim. University of Toronto, Toronto, Ontario, Canada.

**P037 Association between circulating osteoprotegerin levels and estimated risk of BRCA1 -associated breast cancer. [R]** Sarah Park. University of Toronto, Women's College Research Institute, Toronto, Ontario, Canada.



**P038 Transcriptome-wide association study identifies novel genes associated with bladder cancer risk.** Siting Li. Dartmouth Geisel School of Medicine, Hanover, New Hampshire, USA.

**P039 Framework for genomic cancer risk assessment dissemination and implementation in Latin America: The GRACIAS (genetic risk assessment for cancer implementation and sustainment) study.** Jeffrey Weitzel. Latin American School of Oncology, Sierra Madre, California, USA.

**P040 Mutational Heterogeneity of Colorectal Cancers Across Ancestries and Its Implications for Cancer Early Detection.** Preethi Sreenivasan. Natera, Inc., Austin, Texas, USA.

**P041 Improved sensitivity of a multi-analyte early detection test based on mutation, methylation, aneuploidy, and protein biomarkers.** Gustavo Cerqueira. Exact Sciences Corporation, Madison, Wisconsin, USA.

**P042 A genomic model to predict cellular radiosensitivity.** Benjamin Honan. University of Alabama at Birmingham, Birmingham, Alabama, USA.

**P043 A precision medicine gap: limited recognition of colorectal patients eligible for germline testing in molecular residual disease testing setting.** Jeffrey Weitzel. Natera, Inc., Austin, Texas, USA.

**P044 A genetically engineered mouse Sertoli cell line survives chronic humoral immune factors when grafted into diabetic mice.** Rachel Washburn. Texas Tech University Health Sciences Center, Lubbock, Texas, USA.

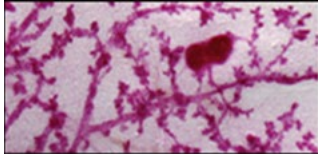
**P045  $\delta$  T cells contribute to an inflammatory and immunosuppressive microenvironment in lung squamous cell carcinoma tumorigenesis.** Táchira Pichardo. Boston University School of Medicine, Boston, Massachusetts, USA.

**P046 CTLA4 targeted therapy using the lymphatic drug delivery system for treatment of metastatic lymph nodes.** Radhika Mishra. Tohoku University, Sendai, Japan.

**P047 A liposomal priming agent increases the sensitivity of liquid biopsies.** Maria Martin Alonso. Massachusetts Institute of Technology, Cambridge, Massachusetts, USA.

**P048 Development of the diagnostic method for pancreatic cancer using novel isolation technology of extracellular vesicles.** Yuta Shimizu. H.U. Group Research Institute G.K., Akiruno, Tokyo, Japan.

**P049 A simplified, potentially point-of-care (POC), electrode method detects changes in the amount of cfDNA/ctDNA and evaluates the response of advanced cancer patients to therapy.** Floyd Taub. aiGENE, Inc., Aurora, Colorado, USA.



**P050 S100P- A promising novel biomarker with potential of early detection of gall bladder cancer.** Neetu Rawal. All India Institute of Medical Sciences, New Delhi, India.

**P051 The INSPIRE Study (Implementing Next-generation Sequencing for Precision Intervention and Risk Evaluation): Scaling Return of Genomic Results.** Ilana Solomon. City of Hope, Duarte, California, USA.

**P052 Carbidopa, an activator of aryl hydrocarbon receptor, suppresses IDO1 expression in pancreatic cancer and decreases tumor growth.** Ksenija Korac. The Texas Tech University Health Sciences Center, Lubbock, Texas, USA.

**P053 Automatically constructed pedigrees accurately identify patients at risk for monogenic and polygenic forms of cancer.** Scott Hebring. Marshfield Clinic, Marshfield, Wisconsin, USA.

**P054 Malaika – Message of Hope Amidst Covid-19 Challenges.** Joyce Namubiru. Uganda Women's Cancer Support Organization, Kampala, Uganda.

**P055 Risk factors for second primary lung cancer among breast cancer survivors.** Eunji Choi. Stanford University School of Medicine, Stanford, California, USA.

**P056 Germline Cancer Susceptibility Gene Testing in Unselected Patients with Soft Tissue Sarcoma: A Multi-Center Prospective Study.** Isaak Ailts. Mayo Clinic, Phoenix, Arizona, USA.

**P057 Application of multi-cancer early detection to lung and breast cancer screening populations.** Jennifer Dennison. The University of Texas MD Anderson Cancer Center, Houston, Texas, USA.

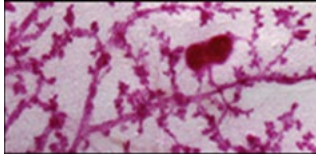
**P058 Rapid, noninvasive, office-based, esophageal cell collection for early detection of esophageal precancer and cancer.** Suman Verma. Lucid Diagnostics Inc., Lake Forest, California, USA.

**P059 A case of stage I esophageal adenocarcinoma diagnosed using a multi-cancer early detection test.** Jason Carey. GRAIL, Inc., Houston, Texas, USA.

**P060 A case of stage II hepatocellular carcinoma diagnosed using a multi-cancer early detection test.** Jason Carey. GRAIL, Inc., Houston, Texas, USA.

**P061 Mechanisms by which Mito-LND inhibits KRAS mutant lung cancer.** Katherine Weh. University of Michigan, Ann Arbor, Michigan, USA.

**P062 Chemotherapy-induced tumour microenvironment remodelling via the MondoA/TXNIP/GDF15 axis.** Jinhai Deng. Kings College London, London, England, United Kingdom.



**P063 Risk Factors Beyond Chemotherapy Exposure for Therapy-Related Myelodysplastic Syndrome (tMDS) and Acute Myeloid Leukemia (tAML) Development in Lymphoma Survivors: A 15-Year SEER-Medicare Analysis.** Abhay Singh. Cleveland Clinic, Cleveland, Ohio, USA.

**P064 Breakpoint-agnostic translocation screening for childhood leukemia.** Erin Marcotte. University of Minnesota, Minneapolis, Minnesota, USA.

**P065 Effects of metformin on breast tissue inflammation in premenopausal women with components of metabolic syndrome.** Liane Pinto. The University of Arizona, Tucson, Arizona, USA.

**P066 Blood-based proteomic signatures associated with MEN1-related Duodenopancreatic Neuroendocrine Tumor Progression.** Jody Vykoukal. The University of Texas MD Anderson Cancer Center, Houston, Texas, USA.

**P067 Evaluating the risk of clinically significant prostate cancer in lesions detected on multiparametric MRI of the prostate.** Chidi Molokwu. Bradford Teaching Hospitals NHS Foundation Trust, Bradford, England, United Kingdom.

**P068 A hybrid modelling approach for abstracting CT imaging indications by integrating natural language processing from radiology reports with structured data from electronic health records.** Aparajita Khan. Stanford University School of Medicine, Stanford, California, USA.

**P069 Screening under-served populations by mobile low dose computerized tomography (LDCT) scans results in stage shift with potential cures: Time for a change in health policy?** Derek Raghavan. Atrium Health Levine Cancer Institute, Charlotte, North Carolina, USA.

**P070 Volumetric parenchymal pattern analysis for breast cancer risk estimation.** Anne Marie McCarthy. University of Pennsylvania, Philadelphia, Pennsylvania, USA.

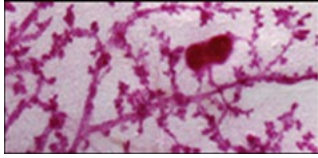
**P071 The role of unique mutations in colorectal carcinogenesis; Does race matter in precision medicine?** Hassan Ashktorab. Howard University, Washington, D.C., USA.

**P072 Direct demonstration of nano-electroporation using magnetoelectric nanoparticles in an ovarian cancer model based on propidium iodide uptake.** Max Shotbolt. University of Miami, Miami, Florida, USA.

**P073 Targeting JAK1 signaling for molecular prevention in clonal hematopoiesis.** Pablo Sanchez Vela. Memorial Sloan Kettering Cancer Center, New York, New York, USA.

**P074 Pregnancy and neonatal outcomes among early-onset colorectal cancer survivors: A nationwide case-control study.** Stephanie Zhao. Washington University School of Medicine, St. Louis, Missouri, USA.

**P075 Comparison of the tumor and lymph node immune microenvironment in early non-small cell lung cancer through multimodal single cell sequencing.** Zhanhao Xi. Boston University School of Medicine, Boston, Massachusetts, USA.



An AACR Special Conference on  
**Precision Prevention, Early Detection,  
and Interception of Cancer**  
November 17-19, 2022 | Austin, TX

**AACR**  
American Association  
for Cancer Research®

21040500

**P076 Contribution of the microbiome to a metabolomic signature predictive of risk for pancreatic cancer.** Johannes Fahrman. The University of Texas MD Anderson Cancer Center, Houston, Texas, USA.

**P077 A blood-based lipid biomarker panel for personalized risk assessment of breast cancer.** Johannes Fahrman. The University of Texas MD Anderson Cancer Center, Houston, Texas, USA.

**P078 Cancer cell derived extracellular vesicles convey protein signatures of small cell lung carcinoma.** Jody Vykoukal. The University of Texas MD Anderson Cancer Center, Houston, Texas, USA.