

An AACR Special Conference on

## Pancreatic Cancer

September 13-16 | Sheraton Boston Hotel | Boston, MA

**AACR**

American Association  
for Cancer Research

2201034

### **Conference Cochairs:**

Andrew M. Lowy, UC San Diego, La Jolla, California

Marina Pasca di Magliano, University of Michigan Medical School, Ann Arbor, Michigan

Robert H. Vonderheide, Penn Medicine Abramson Cancer Center, Philadelphia, Pennsylvania

Jen Jen Yeh, University of North Carolina, Chapel Hill, North Carolina

[R] Remote presentation

CME credit is available for in-person attendance for the designated sessions. On-demand presentations are not eligible for CME.

### **TUESDAY, SEPTEMBER 13**

**6:00 p.m.-7:25 p.m.**

Grand Liberty Ballroom

#### **Welcome and Keynote Lectures**

6:00 p.m.-6:10 p.m.

##### **Welcome from Cochairs**

Andrew M. Lowy, UC San Diego, La Jolla, California

6:10 p.m.-6:15 p.m.

##### **Welcome from Lead Supporter**

Andrew Rakeman, Lustgarten Foundation, Woodbury, New York

6:15 p.m.-6:45 p.m.

##### **Rising Star Keynote [CME Eligible]**

##### **Truncated O-glycosylation in pancreatic cancer**

Avery D. Posey Jr., University of Pennsylvania, Philadelphia, Pennsylvania

6:45 p.m.-7:25 p.m.

##### **Opening Keynote [CME Eligible]**

##### **Contextual determinants of pancreatic tumorigenesis**

Dafna Bar-Sagi, NYU Langone Medical Center, New York, New York

**7:30 pm-9:00 pm**

Back Bay Ballroom

#### **Poster Session A / Opening Reception**

### **WEDNESDAY, SEPTEMBER 14**

**7:00 a.m.-8:00 a.m.**

Back Bay Ballroom

#### **Breakfast Round Tables**

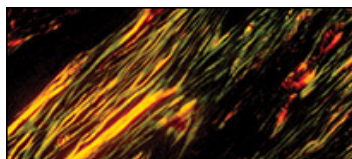
##### **How to Get a Paper Published**

Robert Vonderheide, Penn Medicine Abramson Cancer Center, Philadelphia, Pennsylvania

##### **How to Write a Grant**

Marina Pasca di Magliano, University of Michigan Medical School, Ann Arbor, Michigan

\*Short talk selected from proffered abstracts



An AACR Special Conference on

## Pancreatic Cancer

September 13-16 | Sheraton Boston Hotel | Boston, MA

**AACR**

American Association  
for Cancer Research®

2201034

Howard C. Crawford, Henry Ford Pancreatic Cancer Center,  
Detroit, Michigan

### Starting Your Lab

Katelyn T. Byrne, Oregon Health & Science University, Portland,  
Oregon

Yuliya Pylayeva-Gupta, UNC Lineberger Comprehensive Cancer  
Center, Chapel Hill, North Carolina

### Getting Tenure

Edna Cukierman, Fox Chase Cancer Center, Philadelphia,  
Pennsylvania

### Balancing Clinical and Research Life

Andrew M. Lowy, UC San Diego, La Jolla, California

Diane Simeone, New York University, New York, New York

**8:00 a.m.–10:00 a.m.**

Grand Liberty Ballroom

*Session Chair: Maria Elena Martinez, UCSD Moores Cancer Center, La Jolla, California*

### Plenary Session 1 Disparities and Health Equity [CME Eligible]

8:00 a.m.–8:30 a.m.

#### Advocating for health equity in pancreatic cancer

Karen Winkfield, Meharry-Vanderbilt Alliance, Nashville, Tennessee

8:30 a.m.–8:45 a.m.

#### Socioeconomic analysis and disparities in germline genetic testing for pancreatic cancer\*

Xianghui Zou, North Shore University Hospital & Long Island Jewish  
Medical Center, New Hyde Park, New York

8:45 a.m.–9:00 a.m.

#### Transcriptomic influences of racial disparities in Black patients with pancreatic neuroendocrine tumors\*

Brendon Herring, University of Alabama at Birmingham, Birmingham,  
Alabama

9:00 a.m.–9:15 a.m.

#### Race plays a role on the rate of transdifferentiation in human pancreatic acinar ductal metaplasia and its' drug response\*

Corey Perkins, University of Florida, Gainesville, Florida

9:15 a.m.–9:45 a.m.

#### System-level approaches to cancer care equity [R]

Cleo A. Samuel-Ryals, Flatiron Health, New York, New York

9:45 a.m.–10:00 a.m.

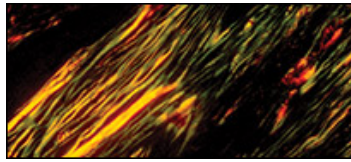
Discussion

**10:00 a.m.–10:30 a.m.**

Grand Liberty Foyer

### Break

\*Short talk selected from proffered abstracts



An AACR Special Conference on

## Pancreatic Cancer

September 13-16 | Sheraton Boston Hotel | Boston, MA

**AACR**  
American Association  
for Cancer Research

2201034

**10:30 a.m.–12:30 p.m.**

### **Plenary Session 2 Bench to Bedside: The Science that Underpins Clinical Trials [CME Eligible]**

Grand Liberty Ballroom

*Session Chair: Diane Simeone, New York University, New York, New York*

10:30 a.m.–11:00 a.m.

#### **Generating T cell responses against pancreatic cancer**

Katelyn T. Byrne, Oregon Health & Science University, Portland, Oregon

11:00 a.m.–11:30 a.m.

#### **Were the mice right? Applying immunobiological insights from the lab to the treatment of patients with pancreatic cancer**

Robert Vonderheide, Penn Medicine Abramson Cancer Center, Philadelphia, Pennsylvania

11:30 a.m.–11:45 a.m.

#### **Characterizing the effects of neoadjuvant therapy in PDAC\***

Amaya Pankaj, Mass General Cancer Center, Harvard Medical School Boston, Massachusetts

11:45 a.m.–12:00 p.m.

#### **Primary results of PanCAN-SR1, a phase 1b study evaluating Gemcitabine, nab-Paclitaxel, Canakinumab, and Spaltalizumab to target IL-1 $\beta$ and PD-1 in metastatic pancreatic cancer with correlative tissue and blood biomarker analysis\***

Paul Oberstein, NYU Langone Health, New York, New York

12:00 p.m.–12:15 p.m.

#### **Initial results of a cohort of advanced pancreatic cancer patients in a phase 1b study of NGM120, a first-in-class anti-GDNF Family Receptor Alpha Like (GFRAL) antibody\***

Andrew Hendifar, Cedars-Sinai Medical Center, Los Angeles, California

12:15 p.m.–12:30 p.m.

Discussion

**12:30 p.m.–2:00 p.m.**

**Lunch on Own**

**2:00 p.m.–4:15 p.m.**

### **Plenary Session 3 Tumor Plasticity and Drug Resistance [CME Eligible]**

Grand Liberty Ballroom

*Session Chair: Scott W. Lowe, Memorial Sloan Kettering Cancer Center, New York, New York*

2:00 p.m.–2:30 p.m.

#### **How important is cell state in cancer?**

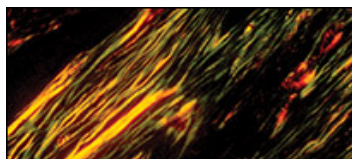
Alex K. Shalek, Massachusetts Institute of Technology, Cambridge, Massachusetts

2:30 p.m.–2:45 p.m.

#### **Three-dimensional genomic analysis of human pancreatic intraepithelial neoplasia (PanIN) reveals striking multifocality and genetic heterogeneity\***

Alicia Braxton, Johns Hopkins Medical Institute, Baltimore, Maryland

\*Short talk selected from proffered abstracts



An AACR Special Conference on

## Pancreatic Cancer

September 13-16 | Sheraton Boston Hotel | Boston, MA

**AACR**

American Association  
for Cancer Research

2201034

- 2:45 p.m.-3:00 p.m. **Overcoming PDAC T cell therapy barriers with CD47-targeted costimulatory fusion proteins\***  
Shannon Oda, Seattle Children's Research Institute, University of Washington, Seattle, Washington
- 3:00 p.m.-3:15 p.m. **An epigenetic memory of inflammation controls context-dependent lineage plasticity in the pancreas\***  
David Falvo, Weill Cornell Medicine, New York, New York
- 3:15 p.m.-3:35 p.m. **Single-cell sequencing elucidates the effects of chemotherapy on cancer cell heterogeneity and the tumor microenvironment of human pancreatic adenocarcinoma\***  
Emily Kawaler, New York University Langone Health, New York, New York
- 3:30 p.m.-4:00 p.m. **The origins and function of copy number alterations in pancreas cancer**  
Scott W. Lowe, Memorial Sloan Kettering Cancer Center, New York, New York
- 4:00 p.m.-4:15 p.m. Discussion
- 4:15 p.m.-6:00 p.m.**  
Back Bay Ballroom **Poster Session B / Reception**

### **THURSDAY, SEPTEMBER 15**

**7:00 a.m.-8:00 a.m.**

Back Bay Ballroom

#### **Breakfast Roundtables**

##### **How to Write a Grant**

Marina Pasca di Magliano, University of Michigan Medical School, Ann Arbor, Michigan

Jen Jen Yeh, University of North Carolina, Chapel Hill, North Carolina

##### **Collaborating with Industry (begins at 7:30 a.m.)**

Eileen O'Reilly, Memorial Sloan Kettering Cancer Center, New York, New York

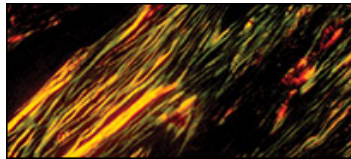
##### **Starting Your Lab**

Howard C. Crawford, Henry Ford Pancreatic Cancer Center, Detroit, Michigan

##### **Balancing Clinical and Research Life**

Andrew M. Lowy, UC San Diego, La Jolla, California

\*Short talk selected from proffered abstracts



Kimberly Perez, Dana-Farber Cancer Institute, Boston,  
Massachusetts

**8:00 a.m.–10:00 a.m.**

**Plenary Session 4 Challenges in Treating Locally Advanced Pancreatic Cancer [CME Eligible]**

Grand Liberty Ballroom

*Session Chair: Andrew M. Lowy, UC San Diego, La Jolla, California*

- |                      |  |
|----------------------|--|
| 8:00 a.m.–8:20 a.m.  | <b>Total neoadjuvant therapy for pancreatic cancer: The role of radiation therapy</b><br>Theodore S. Hong, Massachusetts General Hospital, Boston, Massachusetts   |
| 8:20 a.m.–8:35 a.m.  | <b>Proteomic profiling reveals subtype specific kinase expression in pancreatic cancer*</b><br>Yi Xu, University of North Carolina, Chapel Hill, NC  |
| 8:35 a.m.–8:50 a.m.  | <b>Perioperative liver biopsy captures features of the liver pre-metastatic niche and predicts metastatic outcome after pancreatic cancer resection*</b><br>Linda Bojmar, Cornell University, New York, New York |
| 8:50 a.m.–9:20 a.m.  | <b>Meeting the challenge of pancreatic cancer</b><br>Philip A. Philip, Henry Ford Cancer Center, Detroit, Michigan   |
| 9:20 a.m.–9:50 a.m.  | <b>Precision oncology approaches in pancreatic cancer</b><br>Jen Jen Yeh, University of North Carolina, Chapel Hill, North Carolina  |
| 9:50 a.m.–10:00 a.m. | Panel Discussion   |

**10:00 a.m.–10:30 a.m.**

**Break**

Grand Liberty Foyer

**10:30 a.m.–12:30 p.m.**

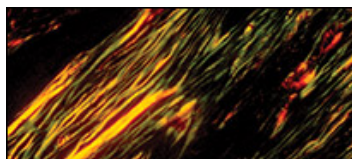
**Plenary Session 5 Prevention & Interception [CME Eligible]**

Grand Liberty Ballroom

*Session Chair: Sapna Syngal, Dana-Farber Cancer Institute, Boston, Massachusetts*

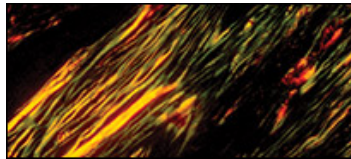
- |                       |  |
|-----------------------|--|
| 10:30 a.m.–11:00 a.m. | <b>Intraductal papillary mucinous neoplasms of the pancreas, an opportunity to prevent pancreatic cancer</b><br>Peter J. Allen, Duke University School of Medicine, Durham, North Carolina |
|-----------------------|--|

\*Short talk selected from proffered abstracts



- 11:00 a.m.-11:15 a.m. **High sensitive mutation detection in liquid biopsy with duodenal fluid captures genetic mutations associated with pancreatic carcinogenesis\***  
Yusuk Ono, Institute of Biomedical Research, Sapporo Higashi  
Tokushukai Hospital, Sapporo, Japan
- 11:15 a.m.-11:30 a.m. **Evaluating circulating tumor DNA by targeted next generation sequencing as a biomarker in the treatment of localized pancreatic cancer\***  
Dhavan Shah, Northwestern University, Chicago, Illinois
- 11:30 a.m.-1:45 a.m. **Excess dietary oleic acid primes the pancreas for cancer\***  
Christian Ruiz, Yale University, New Haven, Connecticut
- 11:45 a.m.-12:15 p.m. **Intercepting pancreatic cancer development with mutant KRAS-targeted immunotherapy**  
Neeha Zaidi, Sidney Kimmel Comprehensive Cancer Center, Baltimore, Maryland
- 12:15 p.m.-12:30 p.m. Discussion
- 12:30 p.m.–2:00 p.m. Lunch on Own**
- 2:00 p.m.–4:00 p.m. Plenary Session 6 Tumor Microenvironment [CME Eligible]**  
Grand Liberty Ballroom  
*Session Chair: Edna Cukierman, Fox Chase Cancer Center, Philadelphia, Pennsylvania*
- 2:00 p.m.-2:30 p.m. **Collagen cleavage controls PDAC metabolism and malignancy via a DDR1-NRF2 cascade and mitochondrial biogenesis**  
Michael Karin, UC San Diego, La Jolla, California
- 2:30 p.m.-2:45 p.m. **Aging modulates the tumor microenvironment of pancreatic cancer\***  
Joaquín Araos Henríquez, Cancer Research UK Cambridge Institute, University of Cambridge, Cambridge, United Kingdom
- 2:45 p.m.-3:00 p.m. **Stromal Netrin G1 ligand (NGL-1): a new modulator of tumorigenesis and immunosuppression in pancreatic cancer\***  
Debora Barbosa Vendramini Costa, Fox Chase Cancer Center, Philadelphia, Pennsylvania
- 3:00 p.m.-3:15 p.m. **Hypoxia synergizes with IL1 to promote an inflammatory fibroblast state in the pancreatic tumor microenvironment\***  
Simon Schwoerer, Memorial Sloan Kettering Cancer Center, New York, New York

\*Short talk selected from proffered abstracts



An AACR Special Conference on

## Pancreatic Cancer

September 13-16 | Sheraton Boston Hotel | Boston, MA

**AACR**  
American Association  
for Cancer Research

2201034

3:15 p.m.-3:45 p.m.

### Breaking down the PDAC tumor microenvironment

Rama Khokha, UHN Princess Margaret Cancer Centre, Toronto, Ontario, Canada

3:45 p.m.-4:00 p.m.

Discussion

**4:00 p.m.-6:00 p.m.**

Back Bay Ballroom

### Poster Session C / Reception

## FRIDAY, SEPTEMBER 16

**7:00 a.m.-8:00 a.m.**

Back Bay Ballroom

### Breakfast

**8:00 a.m.-10:00 a.m.**

Grand Liberty Ballroom

### Plenary Session 7: Immunobiology and Immunotherapy [CME Eligible]

*Session Chair: Marina Pasca di Magliano, University of Michigan Medical School, Ann Arbor, Michigan*

8:00 a.m.-8:30 a.m.

#### Determinants of B cell fate and function in cancer

Yuliya Pylayeva-Gupta, UNC Lineberger Comprehensive Cancer Center, Chapel Hill, North Carolina

8:30 a.m.-8:45 a.m.

#### Mutant KRAS-specific T cell receptors directed against prevalent G12D and G12V variants exhibit potent cytotoxic activity and CD8 co-receptor independence\*

Adham Bear, University of Pennsylvania, Philadelphia, Pennsylvania

8:45 a.m.-9:00 a.m.

#### Cholinergic modulation of T lymphocytes in pancreatic adenocarcinoma\*

Ruth White, Columbia University Medical Center, New York, New York

9:00 a.m.-9:15 a.m.

#### CCR1 expression defines pancreatic tumor associated macrophages and drives their immunosuppressive properties\*

Yaqing Zhang, University of Michigan, Ann Arbor, Michigan

9:15 a.m.-9:30 a.m.

#### IL-17/IL-17RA signaling in the pancreatic epithelium upregulates CXCL5 and B7-H4 to promote tumorigenesis\*

Le Li, UT MD Anderson Cancer Center, Houston, Texas

9:30 a.m.-10:00 a.m.

Discussion

**10:00 a.m.-10:30 a.m.**

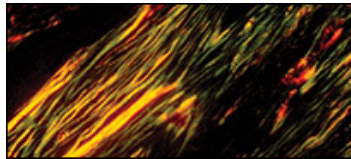
Grand Liberty Foyer

### Break

**10:30 a.m.-12:15 p.m.**

### Plenary Session 8 Metabolism and Microbiome [CME Eligible]

\*Short talk selected from proffered abstracts



Grand Liberty Ballroom

*Session Chair: Florencia McAllister, UT MD Anderson Cancer Center, Houston, Texas*

10:30 a.m.-11:00 a.m. **The role of vitamin D receptor agonists in the treatment of pancreatic adenocarcinoma**

Kimberly Perez, Dana-Farber Cancer Institute, Boston, Massachusetts

11:00 a.m.-11:15 a.m. **Targeting gemcitabine resistance in pancreatic cancer\***

Alica Beutel, University of California, Irvine, Irvine, California

11:15 a.m.-11:30 a.m. **Investigating lipid homeostasis in pancreatic ductal adenocarcinoma under tumor-like stress\***

Xu Han, University of Pennsylvania, Philadelphia, Pennsylvania

11:30 a.m.-12:00 p.m. **ATP production in pancreas cancer and tumor infiltrating lymphocytes**

Joshua D. Rabinowitz, Princeton University, Princeton, New Jersey

12:00 p.m.-12:15 p.m. Discussion

**12:15 p.m.-1:00 p.m. Debate: Targeting the Tumor vs. Stroma [CME Eligible]**

Grand Liberty Ballroom

*Moderator: Eileen O'Reilly, Memorial Sloan Kettering Cancer Center, New York, New York*

12:15 p.m.-12:30 p.m. **Stromal-epithelial co-evolution and complicity in pancreas cancer**

Sunil R. Hingorani, Fred & Pamela Buffett Cancer Center, Omaha, Nebraska

12:30 p.m.-12:45 p.m. Targeting Tumor argument: Howard C. Crawford, Henry Ford Pancreatic Cancer Center, Detroit, Michigan

12:45 p.m.-1:00 p.m. Rebuttals and Discussion

**1:00 p.m.-1:10 p.m.**

Grand Liberty Ballroom

**Closing Remarks**

Marina Pasca di Magliano, University of Michigan Medical School, Ann Arbor, Michigan

\*Short talk selected from proffered abstracts