

Conference Cochairs:

Andrew J. Aguirre, Dana-Farber Cancer Institute, Boston, MA
Edna Cukierman, Fox Chase Cancer Center, Philadelphia, PA
Susan Tsai, The Ohio State University Wexner Medical Center, Columbus, OH
David A. Tuveson, Cold Spring Harbor Laboratory, Cold Spring Harbor, NY
Laura DeLong Wood, Johns Hopkins University School of Medicine, Baltimore, MD

SUNDAY, SEPTEMBER 28

Chair of the day: Laura DeLong Wood, Johns Hopkins University School of Medicine, Baltimore, MD

Registration

3-9 p.m. | American Ballroom Foyer (4th Floor)

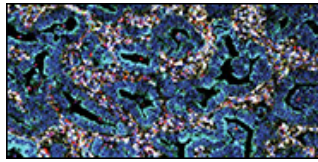
Welcome and Keynote Lectures

5-6:30 p.m. | America Ballroom (4th Floor)

5-5:10	Welcome David A. Tuveson, Cold Spring Harbor Laboratory, Cold Spring Harbor, NY
5:10-5:20	Comments from Lead Supporter Andrew Rakeman, The Lustgarten Foundation, Uniondale, NY
5:20-5:25	Introduction of Keynote Speaker David A. Tuveson
5:25-5:45	Altered pancreas function for detection and interception of localized pancreatic cancer Brian M. Wolpin, Dana-Farber Cancer Institute, Boston, MA
5:45-5:50	Introduction of Rising Star Keynote Speaker David A. Tuveson
5:50-6:10	Integration of histology and multi-plex imaging for targeted understanding of pancreatic cancer progression Ashley L. Kiemen, Johns Hopkins University of Medicine, Baltimore, MD
6:10-6:30	Discussion / Q&A

Break

6:30-6:45 p.m. | American Ballroom Foyer (4th Floor)



Plenary Session 1: Revolutionizing Early Diagnosis and Prevention

6:45-8:30 p.m. | America Ballroom (4th Floor)

Session Chair: Laura DeLong Wood, Johns Hopkins University School of Medicine, Baltimore, MD

- | | |
|-----------|--|
| 6:45-6:50 | Introduction
Laura DeLong Wood |
| 6:50-7:10 | Opportunities with understanding early pancreatic cancer
Laura DeLong Wood |
| 7:10-7:30 | The earlier detection of pancreatic cancer and the role of AI and radiomics
Elliot K. Fishman, Johns Hopkins University School of Medicine, Baltimore, MD |
| 7:30-7:50 | Pancreatic cancer interception strategies and mechanisms
Floencia McAllister, The University of Texas MD Anderson Cancer Center, Houston, TX |
| 7:50-8:10 | Developing successful strategies for the early detection of pancreatic adenocarcinoma
Randall E. Brand, University of Pittsburgh, Pittsburgh, PA |
| 8:10-8:30 | Discussion / Q&A |

Opening Reception

8:30-10:30 p.m. | Essex Ballroom (3rd Floor)

MONDAY, SEPTEMBER 29

Chair of the day: Edna Cukierman, Fox Chase Cancer Center, Philadelphia, PA

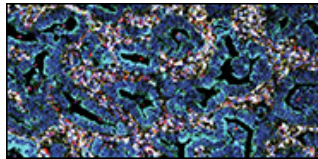
Continental Breakfast

7-8 a.m. | America Foyer and Independence A (4th Floor)

Cochair Highlights

8-8:30 a.m. | America Ballroom (4th Floor)

- | | |
|-----------|--|
| 8-8:20 | How the biology of pancreatic cancer is leading to new therapies
Edna Cukierman |
| 8:20-8:30 | Daily Preview
Edna Cukierman |



Plenary Session 2: Spotlight on New Drug Development

8:30-10:15 a.m. | America Ballroom (4th Floor)

Session Chair: Eileen M. O'Reilly, Memorial Sloan Kettering Cancer Center, New York, NY

- | | |
|------------|--|
| 8:30-8:35 | Introduction
Eileen M. O'Reilly |
| 8:35-8:55 | KRAcking open KRAS: Thoughts on KRAS drug development
David S. Hong, The University of Texas MD Anderson Cancer Center, Houston, TX |
| 8:55-9:15 | CRISPR-drug combinatorial screening identifies effective combination treatments for CDKN2A/MTAP-null PDAC
Kathleen M. Mulvaney, Virginia Polytechnic Institute and State University, Washington, DC |
| 9:15-9:35 | Novel insights and therapies for BRCA-related pancreatic cancer
Kim A. Reiss, University of Pennsylvania Perelman School of Medicine, Philadelphia, PA |
| 9:35-9:40 | Tumor cell plasticity, stromal rewiring, and clonal T cell expansion define response and resistance to combined PARP and PD-1 blockade (POLAR) in pancreatic cancer
Marc Hilmi, Memorial Sloan Kettering Cancer Center, New York, NY* |
| 9:40-9:45 | Altered RNA splicing drives pancreatic cancer by mimicking chromosome deletions
Natasha Pinto Medici, Yale University, New Haven, CT* |
| 9:45-9:50 | p53 licenses transcriptional regulation by TEAD to dictate cell fate in pancreatic ductal adenocarcinoma
Cole Martin, University of North Carolina, Chapel Hill, NC* |
| 9:50-10:15 | Discussion / Q&A |

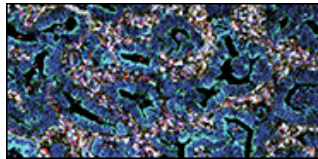
Break

10:15-10:45 a.m. | American Ballroom Foyer (4th Floor)

Plenary Session 3: Biology of Pancreatic Cancer Progression

10:45 a.m.-12:30 p.m. | America Ballroom (4th Floor)

Session Chair: Marina Pasca di Magliano, University of Michigan Rogel Cancer Center, Ann Arbor, MI



- | | |
|-------------|--|
| 10:45-10:50 | Introduction
Marina Pasca di Magliano |
| 10:50-11:10 | The dynamic life of stress granules in pancreatic cancer: A tale of obesity, the cell cycle, and therapeutic resistance
Elda Grabocka, Thomas Jefferson University, Philadelphia, PA |
| 11:10-11:30 | Identifying immune vulnerabilities in pancreatic cancer
Dieter Saur, Technical University of Munich, Germany |
| 11:30-11:50 | Mutant GNAS drives an indolent phenotype in IPMN by modulating the glycome
Kathleen E. DelGiorno, Vanderbilt University School of Medicine, Nashville, TN |
| 11:50-11:55 | Linking reactive oxygen species and neutrophil extracellular traps formation to pancreatic ductal adenocarcinoma progression
Angisha Basnet, West Virginia University School of Medicine, Morgantown, WV* |
| 11:55-12 | Fibroblast STAT3 activation drives organ-specific premetastatic niche formation
Emily Lasse-Opsahl, University of Michigan Medical School, Ann Arbor, MI* |
| 12-12:05 | Chemotherapy-associated liver damage accelerates pancreatic cancer liver metastasis
Nikki Lytle, Medical College of Wisconsin, Milwaukee, WI* |
| 12:05-12:30 | Discussion / Q&A |

Lunch on Own / Free Time

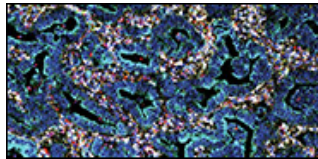
12:30-2:30 p.m.

Plenary Session 4: Harnessing the Immune System to Treat Pancreatic Cancer

2:30-4:15 p.m. | America Ballroom (4th Floor)

Session Chair: Gregory L. Beatty, University of Pennsylvania Perelman School of Medicine, Philadelphia, PA

- | | |
|-----------|--|
| 2:30-2:35 | Introduction
Gregory L. Beatty |
| 2:35-2:55 | Cryptic antigens: Novel targets in pancreas cancer
William Freed-Pastor, Dana-Farber Cancer Institute, Boston, MA |



- 2:55-3:15 Modulating the immunosuppressive stroma: Bringing antitumor immune cells back into the game
Debora Barbosa Vendramini Costa, Michigan State University, Detroit, MI
- 3:15-3:35 Leveraging functional screens to engineer more potent T cells for solid tumors
Julia Carnevale, University California, San Francisco, CA
- 3:35-3:40 Early bystander effect of vaccine boosting of CAR T cells reinvigorates endogenous anti-tumor T cell immunity to regress pancreatic cancer
Leyuan Ma, Children's Hospital of Philadelphia, Philadelphia, PA*
- 3:40-3:45 Myofibroblast programming blocks differentiation of immune enhancing fibroblastic reticular cells in pancreatic cancer
Andrew Gunderson, The Ohio State University Wexner Medical Center, Columbus, OH*
- 3:45-3:50 FAK inhibition improves CD40 agonist immunotherapy response and reduces MAPK signaling in pancreatic ductal adenocarcinoma
Anna Thickens, University of Pennsylvania, Philadelphia, PA*
- 3:50-4:15 Discussion / Q&A

Poster Session A / Reception

4:30-7 p.m. | Essex Ballroom (3rd Floor)

TUESDAY, SEPTEMBER 30

Chair of the day: Andrew J. Aguirre, Dana-Farber Cancer Institute, Boston, MA

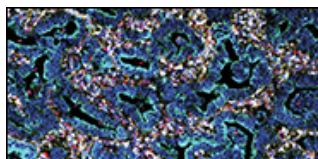
Continental Breakfast

7-8 a.m. | America Foyer and Independence A (4th Floor)

Cochair Highlights

8-8:30 a.m. | America Ballroom (4th Floor)

- 8-8:20 How the biology of pancreatic cancer is leading to new therapies
Andrew J. Aguirre
- 8:20-8:30 Daily Preview
Andrew J. Aguirre



Plenary Session 5: Translational Advances to Dissect Pancreatic Cancer Treatment Response

8:30-10:15 a.m. | America Ballroom (4th Floor)

Session Chair: Manuel Hidalgo, NYU Langone Health Perlmutter Cancer Center, New York, NY

- | | |
|------------|---|
| 8:30-8:35 | Introduction
Manuel Hidalgo |
| 8:35-8:55 | Targeting KRAS beyond G12C in pancreatic cancer
Ignacio Garrido-Laguna, University of Utah Huntsman Cancer Institute, Salt Lake City, UT |
| 8:55-9:15 | Pancreatic cancer phenotypes
Faiyaz Notta, UHN Princess Margaret Cancer Center, Toronto, ON, Canada |
| 9:15-9:35 | Targeting the oncogenic state of RAS in pancreatic cancer with tri-complex inhibitors
Mallika Singh, Revolution Medicines, Redwood City, CA |
| 9:35-9:40 | Integrative proteogenomic profiling of PDAC reveals updated epithelial subtypes and cross-omic predictors of survival
Ferris Nowlan, University of Toronto, Toronto, ON, Canada* |
| 9:40-9:45 | EMT-associated integrin signaling drives resistance to RAS-GTP inhibition in pancreatic cancer
Joshua Choe, Dana-Farber Cancer Institute, Boston, MA* |
| 9:45-9:50 | TNFR-MK2 signaling drives autophagy and resistance to KRAS/MAPK inhibition in pancreatic cancer
Ofejiro Pereye, Washington University in St. Louis, St Louis, MO* |
| 9:50-10:15 | Discussion / Q&A |

Break

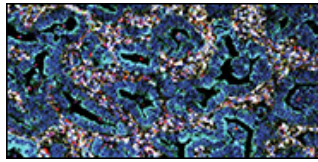
10:15-10:45 a.m. | American Ballroom Foyer (4th Floor)

Stephenson Global Prize Award Presentation and Honorary Lecture

10:45 a.m.-12 p.m. | America Ballroom (4th Floor)

Stephenson Global Prize Lecture

Frank McCormick, Helen Diller Family Comprehensive Cancer Center, San Francisco, CA



Lunch on Own / Free Time

12-2 p.m.

Plenary Session 6: Tumor Heterogeneity and Evolution

2-3:45 p.m. | America Ballroom (4th Floor)

Session Chair: Jen Jen Yeh, University of North Carolina, Chapel Hill, NC

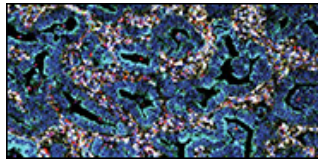
- | | |
|-----------|--|
| 2-2:05 | Introduction
Jen Jen Yeh |
| 2:05-2:25 | The role of plasticity in tissue remodeling and tumor progression
Dana Pe'er, Memorial Sloan Kettering Cancer Center, New York, NY |
| 2:25-2:45 | The “viral-like” behavior of pancreatic cancer
David T. Ting, Massachusetts General Hospital Cancer Center,
Boston, MA |
| 2:45-3:05 | Deconstructing reciprocal tumour-host interactions in the pancreatic
cancer microenvironment
Claus Jorgensen, Cancer Research UK Manchester Institute,
Manchester, England |
| 3:05-3:10 | HMGA2 and protein leucine methylation drive pancreatic cancer lineage
plasticity
Sita Kugel, Fred Hutchinson Cancer Center, Seattle, WA* |
| 3:10-3:15 | Functional dissection of the highly plastic basal cell state in pancreatic
cancer
Anupriya Singhal, Memorial Sloan Kettering Cancer Center,
New York, NY* |
| 3:15-3:20 | Mapping and modulating epithelial-mesenchymal plasticity under
RAS(ON) multi-selective inhibition in PDAC through lineage tracing and
Perturb-seq
Julien Dilly, Dana-Farber Cancer Institute, Boston, MA* |
| 3:20-3:45 | Discussion / Q&A |

Break

3:45-4 p.m. | American Ballroom Foyer (4th Floor)

Plenary Session 7: New Therapeutic Strategies

4-5:45 p.m. | America Ballroom (4th Floor)



Session Chair: Colin D. Weekes, Massachusetts General Hospital, Boston, MA

- 4-4:05 Introduction
Colin D. Weekes
- 4:05-4:25 Targeting tumor-nerve interactions in pancreatic cancer
William L. Hwang, Massachusetts General Hospital, Boston, MA
- 4:25-4:45 Targeting crosstalk mechanisms supporting pancreatic cancer
Christopher J. Halbrook, University of California, Irvine, CA
- 4:45-5:05 Antibody Drug Conjugates for pancreatic cancer
Funda Meric-Bernstam, The University of Texas MD Anderson Cancer Center, Houston, TX
- 5:05-5:10 pan-RAS-GTP inhibition relieves angiosuppression in PDAC by repressing Hedgehog paracrine signaling
Marie Hasselluhn, Herbert Irving Comprehensive Cancer Center, New York, NY*
- 5:10-5:15 A model for the origins of transcriptional heterogeneity in human pancreatic ductal adenocarcinoma
Sabrina Ge, University of Toronto, Toronto, ON, Canada*
- 5:15-5:45 Discussion / Q&A

Poster Session B / Reception

6-9 p.m. | Essex Ballroom (3rd Floor)

WEDNESDAY, OCTOBER 1

Chair of the day: Susan Tsai, The Ohio State University Wexner Medical Center, Columbus, OH

Continental Breakfast

7-8:30 a.m. | Essex Ballroom (3rd Floor)

Meet-the-Expert / Mentoring Roundtables Session

7:30-8:30 a.m. | Essex Ballroom (3rd Floor)

Balancing Clinical and Research Responsibilities Alice Wei	Conducting Translational Research: How to Get Started Kevin Soares
Balancing Clinical and Research Responsibilities	How to Write a Grant Jen Jen Yeh

Neeha Zaidi	
Choosing a Career Path: Academia v Industry Colin Weekes	Publishing Your Paper / Meet the AACR Editors Alia Sajani, Michele Hartsough, and Harmony Turk
Collaborating with Industry Malika Singh	Starting Your Lab Edna Cukierman
UK/EU Opportunities and Collaborations Claus Jorgenson	

Cochair Highlights

8:30-9 a.m. | America Ballroom (4th Floor)

- | | |
|-----------|---|
| 8:30-8:50 | Better options for pancreatic cancer patients today
Susan Tsai |
| 8:50-9 | Daily Preview
Susan Tsai |

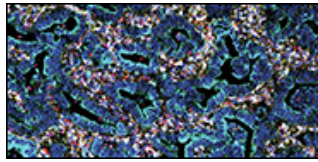
Plenary Session 8: Futuristic Goals in Multimodality Care

9-10:25 a.m. | America Ballroom (4th Floor)

Session Chair: Alice Wei, Memorial Sloan Kettering Cancer Center, New York, NY

- | | |
|-------------|--|
| 9-9:05 | Introduction
Alice Wei |
| 9:05-9:25 | Vaccine therapy in pancreatic cancer
Kevin C. Soares, Memorial Sloan Kettering Cancer Center, New York, NY |
| 9:25-9:45 | Trials and tribulations: Where radiotherapy fits in pancreatic cancer
Nina Niu Sanford, University of Texas Southwestern Medical Center, Dallas, TX |
| 9:45-10:05 | Integration of combinatorial vaccine immunotherapy for pancreatic cancer
Neeha Zaidi, Johns Hopkins University School of Medicine, Baltimore, MD |
| 10:05-10:30 | Discussion / Q&A |

Break



10:25-10:55 a.m. | American Ballroom Foyer (4th Floor)

Session 9: Poster Spotlight Session - Oral Presentations

10:55 a.m.-12 p.m. | America Ballroom (4th Floor)

Session Chair: Susan Tsai, The Ohio State University Wexner Medical Center, Columbus, OH

- | | |
|-------------|---|
| 10:55-11 | Introduction
Susan Tsai |
| 11-11:10 | Examining the unconventional role of Ang–Tie2 signaling in pancreatic CAF/ECM unit function
Jaye C. Gardiner, Tufts University, Medford, MA |
| 11:10-11:20 | Spatially resolved insights into epithelial-stromal co-evolution in pancreatic ductal adenocarcinoma
Ahmed M. Elhossiny, University of Michigan, Ann Arbor, MI |
| 11:20-11:30 | HuR drives immune evasion, metastases and KRAS addiction in pancreatic ductal adenocarcinoma: Implications for IO-based and KRAS inhibitor therapies
Miffy Guo, Oregon Health & Science University, Portland, OR |
| 11:30-11:40 | Cancer-associated fibroblast (CAF) crosstalk with tumor cells bypasses cellular senescence and dampens responses to RAS pathway targeted therapy in PDAC
Boyang Ma, UMass Chan Medical School, Worcester, MA |
| 11:40-11:50 | Discovery of a fibroblast subtype enriched in long-term survivors of PDAC
Alex E. Blain, Dana-Farber Cancer Institute, Boston, MA |
| 11:50-12 | Clonal dynamics and molecular mechanisms mediating resistance to RAS inhibition
Jayne C. McDevitt, University of Pennsylvania, Philadelphia, PA |

Closing Remarks and Departure

12 p.m. | America Ballroom (4th Floor)