



## **COCHAIRS**

Ana C. Anderson, Harvard Medical School and Brigham and Women's Hospital, Boston, Massachusetts

Sandra Demaria, Weill Cornell Medical College, New York, New York

Kunle Odunsi, University of Chicago Medicine Comprehensive Cancer Center, Chicago, Illinois

E. John Wherry, University of Pennsylvania, Philadelphia, Pennsylvania

## **WEDNESDAY, SEPTEMBER 24**

### **Registration**

3-7 p.m. | Grand Salon Foyer

### **Welcome and Keynote Address**

6-6:50 p.m. | Grand Salon Opera AB

6 p.m.

#### **Welcome and Introduction of Keynote Speaker**

Sandra Demaria

6:05 p.m.

#### **Autoimmunity and cancer: Informing each other through patient-oriented studies**

Virginia Pascual, Weill Cornell Medical College, New York, New York

### **Reception**

7-9 p.m. | Grand Salon Opera C

## **THURSDAY, SEPTEMBER 25**

### **Continental Breakfast and Networking Roundtables**

7-8 a.m. | Grand Salon Foyer

### **Plenary Session 1: Immune Tolerance and Surveillance: Implications for Cancer and Autoimmunity**

8-10 a.m. | Grand Salon Opera AB

**Session Chair:** Mark Anderson, University of California, San Francisco, California

8-8:30

#### **Lymphatic transport and T cell recirculation maintains chronic responses in cancer**

Amanda Lund, NYU Langone Perlmutter Cancer Center, New York, New York

8:30-9

#### **Dissecting immune tolerance through outliers**

Mark Anderson, University of California, San Francisco, California

\*-short talk from proffered abstracts

American Association for Cancer Research® Special Conference in Cancer Research

### **MECHANISMS OF CANCER IMMUNITY AND CANCER-RELATED AUTOIMMUNITY**

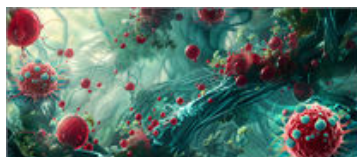
IN ASSOCIATION WITH THE CANCER IMMUNOLOGY (CIMM) WORKING GROUP

September 24-27, 2025 | Montreal, QC, Canada



- 9-9:30                      **Regulation of CD8 T cell fates in cancer**  
Chen Dong, Westlake University, Hangzhou, Zhejiang, China
- 9:30-9:45                **Targeting the ApoE-LDLR pathway disrupts MDSC-mediated systemic immunosuppression and enhances the efficacy of NK cell immunotherapy\***  
Chunbo He, Affiliated Provincial Hospital of Fuzhou University, Fuzhou University, Fuzhou
- 9:45-10                  **Relationship between CD4<sup>+</sup> T cells and cancer stem cells in squamous cancers of the oro-esophageal tract\***  
Maxence Plateau, University of Sherbrooke, Sherbrooke, QC, Canada
- Coffee Break**  
10-10:20 a.m.
- Plenary Session 2: Innate Sensing and Type I Interferon Response in Cancer and Autoimmune Disease**  
10:20 a.m. – 12:20 p.m. | Grand Salon Opera AB  
**Session Chair:** Sandra Demaria, Weill Cornell Medical College, New York, New York
- 10:20-10:50            **Therapeutic modulation of nucleic acids-induced immune activation**  
Sandra Demaria
- 10:50-11:20            **Targeting inflammatory memory and chronic interferon signaling in cancer immunotherapy**  
Andy J. Minn, University of Pennsylvania, Philadelphia, PA
- 11:20-11:50            **Tumor editing suppresses innate and adaptive anti-tumor immunity and is reversed by inhibiting DNA methylation**  
Judy Lieberman, Harvard Medical School, Boston, MA
- 11:50-12:05            **Loss of tumor-intrinsic type I IFN facilitates and predicts bone-metastatic progression in advanced prostate cancer and drives radiotherapeutic resistance\***  
Katie Owen, Peter MacCallum Cancer Centre, Melbourne
- 12:05-12:20            **Tumor-derived Complement Factor B drives tumor growth and anti-PD-1 resistance in STK11-mutant lung adenocarcinoma\***  
Edwin Yau, Roswell Park Comprehensive Cancer Center

\*-short talk from proffered abstracts



**Free time / Lunch on your own**

12:20 – 2:20 p.m.

**Plenary Session 3: Epigenetic and Genetic Regulation of Cancer Immunity and Autoimmunity**

2:20-4:20 p.m. | Grand Salon Opera AB

**Session Chair:** Kunle Odunsi, University of Chicago Medicine Comprehensive Cancer Center, Chicago, IL

- |           |  |
|-----------|--|
| 2:20-2:50 | <b>Unmasking epigenetically hidden targets for adoptive T cell immunotherapy of ovarian cancer</b><br>Kunle Odunsi, University of Chicago Medicine Comprehensive Cancer Center, Chicago, IL                      |
| 2:50-3:20 | <b>Epigenetic regulation of T cells in autoimmunity and anti-cancer immunity</b><br>Maureen Su, UCSF - University of California San Francisco, California, United States   |
| 3:20-3:50 | <b>Germline genetic variation affecting tumor immune microenvironment and immune-related adverse events</b><br>Elad Ziv, UCSF - University of California San Francisco, San Francisco, California, United States |
| 3:50-4:05 | <b>Targeting PRMT5 to modulate endogenous retroviruses expression in melanoma*</b><br>Simon Milette, Yale University, New Haven  |
| 4:05-4:20 | <b>Sumoylation blockade exposes the dark epigenome to drive ZBP1 viral mimicry for cancer immunotherapy*</b><br>Maria Goicoechea, The Institute of Cancer Research, London                                       |

**Coffee Break**

4:20-4:40 p.m.

\*-short talk from proffered abstracts



## **Plenary Session 4: Adaptive Immune Regulation in Cancer and Autoimmunity**

*Organized by the Cancer Immunology (CIMM) Working Group*

4:40-5:45 p.m. | Grand Salon Opera AB

**Session Chair:** Abigail Overacre, UPMC Hillman Cancer Center, Pittsburgh, Pennsylvania

- |           |  |
|-----------|--|
| 4:40-5:05 | <b>Functional fate of Foxp3<sup>+</sup> regulatory T cells in the tumor microenvironment</b><br>Ciriaco A. Piccirillo, Research Institute of McGill University, Montreal, Canada |
| 5:05-5:30 | <b>Spatial Instruction of Tissue T Cell Immunity</b><br>Miguel Reina-Campos, La Jolla Institute for Immunology, La Jolla, California   |
| 5:30-5:45 | <b>Targeting PAR-2 improves tumor antigen presentation and primes the immune system for anti-PD-1 immunotherapy*</b><br>Samya Aouad, CRCHUM, Montreal                            |

## **Poster Session A and Reception**

6-8 p.m. | Grand Salon Opera C

## **FRIDAY, SEPTEMBER 26**

## **Continental Breakfast and Networking Roundtables**

7-8 a.m. | Grand Salon Foyer

## **Plenary Session 5: Therapeutics at the Intersection of Cancer and Autoimmunity**

8:00-9:30 a.m. | Grand Salon Opera AB

**Session Chair:** E. John Wherry, University of Pennsylvania, Philadelphia, Pennsylvania

- |        |   |
|--------|---|
| 8-8:30 | <b>Endocrine organs in the crosshairs of the immune system</b><br>Zoe Quandt, University of California, San Francisco, California   |
| 8:30-9 | <b>Immune checkpoint-inhibitor associated myocarditis: From mouse to humans</b><br>Javid Moslehi, University of California, San Francisco, California   |
| 9-9:15 | <b>Disrupting TACI signaling to restore immune balance: Harnessing translational opportunities at the intersection of cancer and autoimmunity*</b><br>Yong Sheng, QIMR Medical Research Institution, Brisbane |

\*-short talk from proffered abstracts

American Association for Cancer Research® Special Conference in Cancer Research

**MECHANISMS OF CANCER IMMUNITY AND CANCER-RELATED AUTOIMMUNITY**

IN ASSOCIATION WITH THE CANCER IMMUNOLOGY (CIMM) WORKING GROUP

September 24-27, 2025 | Montreal, QC, Canada



9:15-9:30                      **Immunosuppressive  $\gamma\delta$  T cells limit anti-tumor immunity in ICI-resistant tumors from autoimmune-prone mice\***  
Camille Hansen, University of Utah, Salt Lake City

**Coffee Break**  
9:30-9:50 a.m.

**Plenary Session 6: Role of Microbiota in Immunologic Fitness**

9:50-11:35 a.m. | Grand Salon Opera AB

**Session Chair:** Sandra Demaria, Weill Cornell Medical College, New York, New York

9:50-10:20                      **Reprogramming the tumor-immune microenvironment: From stromal circuits to engineered microbial immunotherapies**  
Laurence Zitvogel, Goustave Roussy, Paris, France

10:20-10:50                      **Reprogramming the tumor-immune microenvironment: From stromal circuits to engineered microbial immunotherapies**  
Nicholas Arpaia, Columbia University Irving Medical Center, New York, New York, United States

10:50-11:20                      **Lifestyle induced susceptibility of immune related adverse events**  
Abigail Overacre, UPMC Hillman Cancer Center, Pittsburgh, Pennsylvania

11:20-11:35                      **Impact of gut microbiota on response to Bacillus Calmette-Guérin immunotherapy in bladder cancer: Towards a predictive molecular model\***  
Marine Boireau, Faculty of Medicine, Université Laval, Québec

**Break**  
11:35-11:45 a.m.

\*-short talk from proffered abstracts



## **Panel Discussion: Modeling Immune-Related Adverse Events**

11:45 a.m. – 12:30 p.m. | Grand Salon Opera AB

**Session Chair:** Javid Moslehi, University of California, San Francisco, California

11:45-12      **Opportunities and obstacles in modeling immune-related adverse events**

Arabella Young, University of Utah, Salt Lake City, Utah - [R]

12-12:30      Panel Discussion

### **Panelists:**

David E. Gerber, University of Texas Southwestern Medical Center, Dallas, Texas

Lily Pao, Johnson & Johnson Innovative Medicine, Cambridge, Massachusetts

Zoe Quandt, University of California, San Francisco, California

Chloe Villani, Massachusetts General Hospital (MGH) Center for Cancer Research, Boston, MA

Arabella Young, University of Utah, Salt Lake City, Utah - [R]

[R] – Remote Presentation

## **Free time / Lunch on your own**

12:30 - 2:30 p.m.

## **Plenary Session 7: CD8 T cells in Cancer and Autoimmunity**

2:30-4:30 p.m. | Grand Salon Opera AB

**Session Chair:** Ana C. Anderson, Harvard Medical School and Brigham and Women's Hospital, Boston, Massachusetts

2:30-3      **Mechanisms of TCF1 regulation of stem-like T cells in cancer and autoimmunity**

Ana C. Anderson, Harvard Medical School and Brigham and Women's Hospital, Boston, Massachusetts

3-3:30      **Exhaustion and residency of CD8 T cells**

E. John Wherry, University of Pennsylvania, Philadelphia, Pennsylvania

3:30-4      **T cell stemness and differentiation in autoimmunity and cancer**

Andrea Schietinger, Memorial Sloan-Kettering Cancer Center, New York, New York

\*-short talk from proffered abstracts

American Association for Cancer Research® Special Conference in Cancer Research

**MECHANISMS OF CANCER IMMUNITY AND CANCER-RELATED AUTOIMMUNITY**

IN ASSOCIATION WITH THE CANCER IMMUNOLOGY (CIMM) WORKING GROUP

September 24-27, 2025 | Montreal, QC, Canada





4-4:15 **Meta-Analysis of Neoantigens: Insights from the Cancer Epitope Database and Analysis Resource (CEDAR)\***

Zeynep Kosaloglu-Yalcin, La Jolla Institute for Immunology, La Jolla

4:15-4:30 **Leveraging peripheral leukocyte recruitment to improve efficacy and mitigate toxicities following checkpoint blockade\***

Kristen Pauken, The University of Texas MD Anderson Cancer Center, Houston

**Coffee Break**

4:30-4:50 pm

**Plenary Session 8: Interplay of B and T cells in Cancer and Autoimmunity**

4:50-6:20 p.m. | Grand Salon Opera AB

**Session Chair:** Amanda Lund, NYU Langone Perlmutter Cancer Center, New York, New York

4:50-5:20 **Modulating B and T cell interactions within and outside of tertiary lymphoid structures for improved anti-tumor immunity**

Tullia Bruno, University of Pittsburgh, Pittsburgh, Pennsylvania

5:20-5:50 **B cell checkpoints as regulators of tumor immunity and self-tolerance**

Lloyd Bod, Harvard Medical School and Massachusetts General Hospital, Boston, Massachusetts, United States

5:50-6:05 **B cell infiltration and clonal expansion in tertiary lymphoid structures: Insights from intravital microscopy\***

Gabrielle Rowe-Brown, Johns Hopkins All Children's Hospital, Saint Petersburg

6:05-6:20 **Single-cell profiling of tumor-infiltrating B cells reveals autoantibody repertoires and potential cross-talk with T cells\***

Mikiya Takata, The University of Tokyo, Tokyo

**Poster Session B and Reception**

6:30-8:30 p.m. | Grand Salon Opera C

**SATURDAY, SEPTEMBER 27**

**Continental Breakfast and Networking Roundtables**

7-8 a.m. | Grand Salon Foyer

\*-short talk from proffered abstracts

American Association for Cancer Research® Special Conference in Cancer Research

**MECHANISMS OF CANCER IMMUNITY AND CANCER-RELATED AUTOIMMUNITY**

IN ASSOCIATION WITH THE CANCER IMMUNOLOGY (CIMM) WORKING GROUP

September 24-27, 2025 | Montreal, QC, Canada



## Keynote Address

8-8:45 a.m. | Grand Salon Opera AB

8 a.m.

### Introduction of Keynote Speaker

Ana C. Anderson, Harvard Medical School and Brigham and Women's Hospital, Boston, Massachusetts

8:05 a.m.

### Targeting Tregs in tumors

Dario AA Vignali, University of Pittsburgh, Pittsburgh, Pennsylvania

## Plenary Session 9: Targeting Regulatory T cells in the Tumor Microenvironment and in Autoimmunity

8:50-10:20 a.m. | Grand Salon Opera AB

**Session Chair:** Dario AA Vignali, University of Pittsburgh, Pittsburgh, Pennsylvania

8:50-9:20

### From concept to cure: Developing TregSight for precision immunotherapy

Billur Akkaya, Ohio State University, Columbus, Ohio

9:20-9:50

### CAR-Treg adoptive immunotherapy to treat autoimmune disease

Jeff Bluestone, University of California, San Francisco, California

9:50-10:05

### Myeloid checkpoint blockade potentiates radiotherapy by modulating dendritic cells and reducing Treg-driven immunosuppression\*

Maud Charpentier, Weill Cornell Medical College, New York

## Coffee Break

10:05-10:25 a.m.

## Spotlight on Emerging Science

10:25 – 11:25 a.m. | Grand Salon Opera AB

**Session Chair:** Sandra Demaria, Weill Cornell Medical College, New York, New York

10:25-10:40

### CCR5 inhibition with leronlimab is associated with enhanced PD-L1 expression, ICI response, and long-term survival in metastatic TNBC\*

Richard Pestell, Pennsylvania Cancer and Regenerative Medicine Center, Baruch S. Blumberg Institute, Wynnwood, Pennsylvania

10:40-10:55

### Unraveling the sexually dimorphic immune microenvironment in gastric cancer\*

Ryan Heslin, University of Texas Southwestern Medical Center, Dallas

\*-short talk from proffered abstracts

American Association for Cancer Research® Special Conference in Cancer Research

**MECHANISMS OF CANCER IMMUNITY AND CANCER-RELATED AUTOIMMUNITY**

IN ASSOCIATION WITH THE CANCER IMMUNOLOGY (CIMM) WORKING GROUP

September 24-27, 2025 | Montreal, QC, Canada





- 10:55-11:10      **Neuroimmune dysregulation in ovarian cancer: The role of chronic stress on microglial activation and systemic inflammation\***  
Luinet Melendez-Rodriguez, Ponce Health Sciences University, Coto Laurel
- 11:10-11:25      **Comprehensive blood profiling for immunotherapy outcome prediction and longitudinal immune trajectory characterization\***  
Max Emmerich, The Francis Crick Institute, London
- Plenary Session 10: Activity and Autoimmune Toxicity of Cancer Immunotherapy**  
11:30 a.m.-1 p.m. | Grand Salon Opera AB  
**Session Chair:** Kunle Odunsi, University of Chicago Medicine Comprehensive Cancer Center, Chicago, Illinois
- 11:30-12      **Predicting, monitoring, and diagnosing immune-related adverse events**  
David E. Gerber, University of Texas Southwestern Medical Center, Dallas, Texas
- 12 -12:30      **Cracking the code of immune tolerance: Lessons from immune-related adverse events to immunotherapy**  
Chloe Villani, Massachusetts General Hospital (MGH) Center for Cancer Research, Boston, MA
- 12:30-12:45      **Therapeutic inhibition of TREX1 elicits type I interferon-mediated antitumor immunity with minimal autoimmune toxicity\***  
Cong Xing, UT Southwestern Medical Center, Dallas
- 12:45-1      **nELISA high-throughput protein profiling applied to the RADIOHEAD cohort: Insights from the largest plasma proteomics study of patients receiving checkpoint inhibitor therapy\***  
Nathaniel Robichaud, Nomic Bio
- Closing Remarks**  
1 p.m.

\*-short talk from proffered abstracts