

ADVANCES IN MALIGNANT LYMPHOMA: FROM DISCOVERY TO CLINICAL IMPACT

IN COLLABORATION WITH THE INTERNATIONAL CONFERENCE ON MALIGNANT LYMPHOMA
June 24-27, 2026 | Philadelphia, PA



Current as of May 22, 2026

Short talks selected from proffered abstracts

PR001 A053 **Cytokine-linked stromal remodeling in transformed follicular lymphoma impacts macrophage function and can be detected non-invasively** Laura Beckmann, Department of Medical Oncology, Dana-Farber Cancer Institute, Boston, MA, United States

PR002 A016 **Bcl6 -driven Cd70 -deficient Diffuse Large B-cell lymphomas originate from innate-like cells with blunted CD4+ cytotoxic T-cell immune surveillance** Elisa Mandato, Dana-Farber Cancer Institute, Boston, MA, United States

PR003 **BTG1 mutation induces an age-associated B cell precursor population with extranodal and brain-infiltrating potential in diffuse large B cell lymphoma via interleukin-21 hypersensitivity** Yulai Zhou, Yale university, New Haven, CT, United States

PR004 **BTK A428D is a recurrent pan-resistance mutation to BTK degraders in clinical trials** Quinlan Sievers, Memorial Sloan Kettering, New York, United States

PR005 **Mutant FOXO1 licenses MYC transformation of human germinal center B cells into dark-zone MYC-BCL2 high-grade B cell lymphomas** Sabrina Giampaolo, The AIRC Institute of Molecular Oncology, Milano, MI, Italy

PR006 **C5ORF30/MACIR is a regulator of HLA-DR expression and immune evasion in high-risk DLBCL** Anand Jeyasekharan, Cancer Science Institute of Singapore, National University of Singapore, Singapore, Singapore

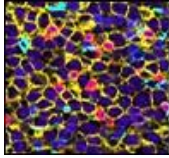
PR007 **Mechanisms and impact of bystander killing by CAR T cells** Joanna Chorazeczewski, University of Chicago, Chicago, IL, United States

Poster Session (To be presented on June 25 from 5:30-7:30 p.m. ET)

A001 **Mechanisms and impact of bystander killing by CAR T cells** Joanna Chorazeczewski, University of Chicago, Chicago, IL, United States

A002 **Non-alpha IL2R agonist improves CAR T cell therapy by preventing CAR T dysfunction in relapsed/refractory large B cell lymphoma** Kotaro Arita, University of Texas MD Anderson Cancer Center, Houston, TX, United States

1



**ADVANCES IN MALIGNANT LYMPHOMA:
FROM DISCOVERY TO CLINICAL IMPACT**

IN COLLABORATION WITH THE INTERNATIONAL CONFERENCE ON MALIGNANT LYMPHOMA
June 24-27, 2026 | Philadelphia, PA

AACR American Association
for Cancer Research®



2511020F

A003 CD74 as a novel chimeric antigen receptor (CAR)-T cell target for cHL and the TME Shelby Sloan, Ohio State University, College of Medicine, Department of Internal Medicine, Division of Hematology, Columbus, OH, United States

A004 ROR1 upregulation after CD19-CAR T-cell relapse in mantle cell lymphoma reveals a targetable vulnerability for ROR1-directed bispecific modalities Yixin Yao, the University of Texas MD Anderson Cancer Center, Houston, TX, United States

A005 BTK A428D is a recurrent pan-resistance mutation to BTK degraders in clinical trials Quinlan Sievers, Memorial Sloan Kettering, New York, United States

A006 Deleterious SPEN mutations induce epigenetic reprogramming to promote survival and enhance immune evasion pathways in an aggressive subset of BN2/C1 DLBCL tumors Janek Walker, Mayo Clinic, Rochester, MN, United States

A007 Patterns of DNA methylation in HIV-associated DLBCL Samantha Beck, University of North Carolina at Chapel Hill, Chapel Hill, NC, United States

A008 BTG1 mutation induces an age-associated B cell precursor population with extranodal and brain-infiltrating potential in diffuse large B cell lymphoma via interleukin-21 hypersensitivity Yulai Zhou, Yale university, New Haven, CT, United States

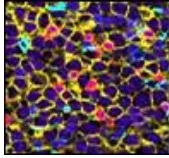
A009 PKC δ -mediated feedback control of B-cell receptor signaling and its subversion in diffuse large B-cell lymphoma Ruifeng Sun, Yale University, New Haven, CT, United States

A010 Mutant FOXO1 licenses MYC transformation of human germinal center B cells into dark-zone MYC-BCL2 high-grade B cell lymphomas Sabrina Giampaolo, The AIRC Institute of Molecular Oncology, Milano, MI, Italy

A011 OSTM1 restrains B-cell lymphomagenesis by promoting PDE3B degradation and activating cAMP-PKA-CREB signaling Muhammad Tariq, Rutgers University, Piscataway, NJ, United States

A012 USP11 links germinal center B-cell fate to adaptive immune crosstalk in immunized mice Anirban Roychowdhury, Virginia Commonwealth University, Richmond, VA, United States

2



**ADVANCES IN MALIGNANT LYMPHOMA:
FROM DISCOVERY TO CLINICAL IMPACT**

IN COLLABORATION WITH THE INTERNATIONAL CONFERENCE ON MALIGNANT LYMPHOMA
June 24-27, 2026 | Philadelphia, PA



2511020F

A013 Impact of putative cell of origin on CD19+CAR-T outcomes in patients with large B-cell lymphoma Muhammad Bilal Abid, Texas Tech University Health Science Center, School of Medicine, Lubbock, TX, United States

A014 OR2B6 is a chemosensor associated with activated B-cell like diffuse large B cell and mantle cell lymphoma Giulio Sartori, Institute of Oncology Research, Faculty of Biomedical Sciences, USI, Bellinzona, Switzerland

A015 Immunoglobulinheavy chain variable region gene mutational status in chronic lymphocytic leukemia patients in Nigeria. Ijeoma Uzoma, University of Nigeria Nsukka, Enugu, Nigeria

A016 Bcl6 -driven Cd70 -deficient diffuse large b-cell lymphomas originate from innate-like cells with blunted CD4+ cytotoxic T-cell immune surveillance Elisa Mandato, Dana-Farber Cancer Institute, Boston, MA, United States

A017 A patient derived xenograft repository capturing clinical and molecular heterogeneity of large B-cell lymphoma Haopeng Yang, MD Anderson Cancer Center, Houston, TX, United States

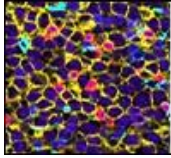
A018 EMT-like reprogramming defines drug-tolerant persister cell plasticity in mantle cell lymphoma Wei Wang, UT MDACC, Houston, TX, United States

A019 Ex vivo modeling of immune interactions to improve immunotherapeutic efficacy in follicular lymphoma Ioulia Vogiatzi, Dana Farber Cancer Institute, Boston, MA, United States

A020 Characterizing the disease pathogenesis and translational potential of naturally occurring canine small cell B cell lymphoma Tatianna Travieso, Colorado State University, Fort Collins, CO, United States

A021 Peripheral T cell lymphoma not otherwise specified: characterization of pet dogs as a model organism Sara Cook, Colorado State University, Fort Collins, CO, United States

A022 A naturally occurring feline model for human indolent intestinal T-cell neoplasia Shay Curry, CSU, Fort Collins, United States



ADVANCES IN MALIGNANT LYMPHOMA: FROM DISCOVERY TO CLINICAL IMPACT

IN COLLABORATION WITH THE INTERNATIONAL CONFERENCE ON MALIGNANT LYMPHOMA
June 24-27, 2026 | Philadelphia, PA

AACR American Association
for Cancer Research®



2511020F

A023 Different paths to the same destination: Molecular divergence and functional convergence in human and canine lymphomas Jaime Modiano, University of Minnesota, Minneapolis, MN, United States

A024 Harnessing repressive β -catenin-LEF1 complexes in chronic lymphocytic leukemia and Richter's transformation Kadriye Cosgun, 1Center of Molecular and Cellular Oncology, Yale University, New Haven, CT, United States

A025 CFON-026, a novel macrocyclic BTK inhibitor, disrupts scaffold-dependent signaling and overcomes resistance to BTK-directed therapies Erica Lamkin, University of Miami Miller School of Medicine, Miami, FL, United States

A026 Uncovering the biological contribution of polatuzumab vedotin when combined with glofitamab in R/R Large B-Cell Lymphoma Wilfred Leung, Genentech Inc, South San Francisco, CA, United States

A027 Combination targeted therapy with ViPOR in relapsed/refractory (R/R) and treatment-naïve (TN) mantle cell lymphoma (MCL): Analysis of safety, efficacy, and minimal residual disease (MRD) Christopher Melani, National Cancer Institute, Bethesda, MD, United States

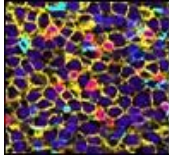
A028 Targeting eIF4A1 reveals crosstalk between BCR signaling and translation in aggressive B-cell lymphoma Forum Kayastha, 1) Division of Hematology, Oncology, and Palliative Care, Department of Internal Medicine, School of Medicine, Virginia Commonwealth University, Richmond, Virginia. 2) Section of Hematology and Oncology, Medicine Service, Richmond VA Cancer Center, Richmo, Richmond, VA, United States

A029 c-MYC/BCL2 induced replication stress drives dependence on POLQ-Mediated Microhomology-Mediated End Joining in aggressive Large B-Cell Lymphoma Cecilia Ayala-Zambrano, Mayo Clinic, Rochester, MN, United States

A030 Striking Gold: CpG gold (Au) lipid nanoparticles (CAL) promote toll-like receptor 9 mediated killing in mouse and human lymphomas Isabella Stathas, Northwestern University, Chicago, IL, United States

A031 Splicing-derived neoantigens in DLBCL reveal subtype- and cell-type-specific predicted neoantigen targets Reid Shaw, University of Chicago, Chicago, IL, United States

4



**ADVANCES IN MALIGNANT LYMPHOMA:
FROM DISCOVERY TO CLINICAL IMPACT**

IN COLLABORATION WITH THE INTERNATIONAL CONFERENCE ON MALIGNANT LYMPHOMA
June 24-27, 2026 | Philadelphia, PA



2511020F

A032 Bispecific antibody dose optimization in a syngeneic lymphoma model and development of bispecific nanoshells (BINS) for enhanced immune targeting Aiko Matsuda, Northwestern University, Chicago, IL, United States

A033 Inhibitors of GRK2-targeting-microRNAs: new therapeutic strategies for MALT1-dependent lymphomas Jing Cheng, Mayo Clinic, Rochester, MN, United States

A034 Unlocking BCMA in aggressive lymphomas: A native receptor-targeted peptide for theranostic applications Elisabetta Pingitore, University Magna Graecia of Catanzaro, Department of Experimental and Clinical Medicine, Catanzaro, Italy

A035 ER-associated retrotranslocation generates a cytosolic OSTM1 E3 ubiquitin ligase that targets PDE3B for degradation Hassan Sajjad, Department of Chemical Biology, Ernest Mario School of Pharmacy, Rutgers University, Piscataway, NJ, United States

A036 Amplifying B-cell lymphoma apoptosis by targeting two oncoproteins with a new bispecific compound Brittany Mahon, Thomas Jefferson University, Philadelphia, PA, United States

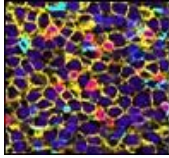
A037 FLIPI24 stratifies outcomes in follicular lymphoma treated with R2-based therapy: A pooled MD Anderson trial cohort Dai Chihara, MD Anderson Cancer Center, Houston, TX, United States

A038 Performance of classification models using limited genomic data in cases of newly diagnosed large B cell lymphoma Daniel Landsburg, University of Pennsylvania, Philadelphia, PA, United States

A039 FFPE-CUT Tag transcriptional activation mapping in FFPE patient biopsies reveals novel druggable pathways in lymphoma Andrea Johnstone, EpiCypher, Durham, NC, United States

A040 Polyunsaturated fatty acids control lipid membrane dynamics and enable B-cell lymphomagenesis Etienne Leveille, Yale University, New Haven, CT, United States

A041 Prognostic significance of post-CAR-T macrocytosis in large B-cell lymphoma Shady Tantawy, MD Anderson Cancer Center, Houston, TX, United States



ADVANCES IN MALIGNANT LYMPHOMA: FROM DISCOVERY TO CLINICAL IMPACT

IN COLLABORATION WITH THE INTERNATIONAL CONFERENCE ON MALIGNANT LYMPHOMA
June 24-27, 2026 | Philadelphia, PA

AACR American Association
for Cancer Research®



2511020F

A042 Genetic and microenvironmental determinants of site-to-site heterogeneity in follicular lymphoma Matthew Stern, Oregon Health & Sciences University, Portland, OR, United States

A043 Reduced KLF2 expression in canine marginal zone lymphoma mirrors human disease Elise Weir, Masonic Cancer Center, University of Minnesota Twin Cities, Minneapolis, MN, United States

A044 hTid-1 (DNAJA3) in tumorigenesis: A potential regulator of lymphoma pathobiology and therapeutic target Anu Singh, Jawaharlal Nehru University, Delhi, India

A045 Integrated tumor genomics and peripheral immune profiling identify complementary biomarkers of response to frontline pembrolizumab in extranodal NK/T-cell lymphoma. Amira Marouf, Memorial Sloan Kettering Cancer Center, New York, NY, United States

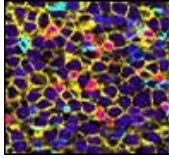
A046 Dynamic changes in peripheral blood immune cells are associated with response to targeted therapies in relapsed/refractory T-cell lymphoma Gonca Ozcan, National Heart, Lung, and Blood Institute, National Institutes of Health, Bethesda, MD, United States

A047 Final analysis of a Phase 1 study of ibrutinib dose-escalation in TEDDI-R with isavuconazole for relapsed or refractory primary DLBCL of the CNS Rahul Lakhotia, Center for Cancer Research, NCI, NIH, Bethesda, MD, United States

A048 Surviving undiagnosed rare lymphoma: A patient perspective on diagnostic delays, treatment barriers, and advocacy in stage IV SPTCL with HLH Harjeet Kaur, Chai & Hope - South Asian Cancer Support Community, Calgary, AB, Canada

A049 Spatially resolved microenvironment profiling reveals distinct follicular lymphoma archetypes Yoshiaki Abe, MD Anderson Cancer Center, Houston, TX, United States

A050 Immune checkpoint sensitivity through spatial reprogramming of the tumor microenvironment in T cell lymphoma Neha Akkad, MD Anderson Cancer Center, Houston, TX, United States



**ADVANCES IN MALIGNANT LYMPHOMA:
FROM DISCOVERY TO CLINICAL IMPACT**

IN COLLABORATION WITH THE INTERNATIONAL CONFERENCE ON MALIGNANT LYMPHOMA
June 24-27, 2026 | Philadelphia, PA

AACR American Association
for Cancer Research®



2511020F

A051 Spatially dispersed MYC-BCL2 co-expressing cells confer poor survival in DLBCL through functional p53 loss and PGE2-mediated immune evasion Shruti Sridhar, Cancer Science Institute, National University of Singapore, Singapore, Singapore

A052 Lymformer: A domain-specific, self-supervised vision transformer for survival prediction using whole slide images in diffuse large B-cell lymphoma Chen Zhou, Penn State University, State College, PA, United States

A053 Cytokine-linked stromal remodeling in transformed follicular lymphoma impacts macrophage function and can be detected non-invasively Laura Beckmann, Department of Medical Oncology, Dana-Farber Cancer Institute, Boston, MA, United States

A054 Commensal bacteria drive B-cell lymphoma development and progression in the presence of intact innate immunity Jaeyong Jung, Rutgers University, Piscataway, NJ, United States

A055 C5ORF30/MACIR is a regulator of HLA-DR expression and immune evasion in high-risk DLBCL Anand Jeyasekharan, Cancer Science Institute of Singapore, National University of Singapore, Singapore, Singapore

A056 Microenvironmental ecosystems in peripheral T-cell lymphomas reveal therapeutic vulnerabilities Wen-Hsuan Wendy Lin, Duke University Medical Center, Durham, NC, United States

A057 Spatially resolved single cell atlas reveals niche-driven transcriptional rewiring across a b-cell lymphoma continuum and gives insights into transformation. Joseph Lownik, Cedars Sinai Health Sciences University, Los Angeles, CA, United States

A058 Clinical and preclinical evidence indicate gender-based differences in the sensitivity of B-cell lymphoid tumors to BTK inhibitors Eleonora Cannas, Institute of Oncology Research, Faculty of Biomedical Sciences, Università della Svizzera italiana, Bellinzona, Switzerland